



# **The Warehouse Residency for Deaf and Disabled artists**

**Arts House**



**Easy English**

## Help with this book



You can get someone to help you

- understand this book
- find more information.



Contact information is at the end of this book.



## About this book

This book is from Arts House.



This book is about

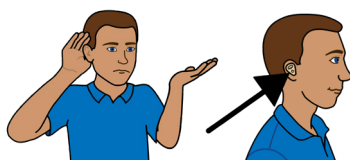
**The Warehouse Residency.**

The Warehouse Residency is a program for artists who

- are Deaf

or

- have a disability.



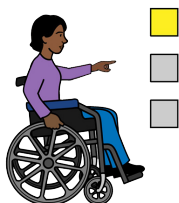
We call it **the program** in this book.

## What is the program?



The program supports these artists to

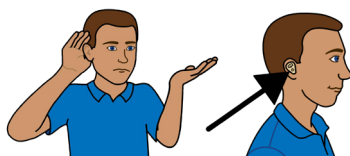
- make new and different art
- choose the art they want to make
- work in a safe place.



## Who can apply?



You **must** be an artist who lives in Australia.



We support all kinds of artist, including

- Deaf artists



- people with disability



- people with illness that will **not** go away

- **neurodivergent** people.



Neurodivergent means your brain works in a different way.

For example, if you are autistic.



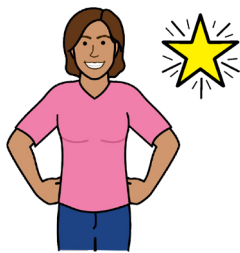
The Warehouse Residency is for people who already work as artists.

# What should your art project be?



We choose art projects that

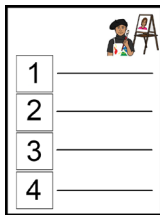
- are **accessible**
  - accessible means it is easy for everyone to go to and enjoy



- are **engaging**
  - engaging means you try something different that makes your audience interested



- will give you new skills.

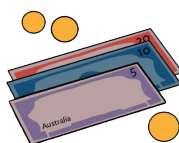


You should have a good plan about

- how you can make your art project happen



- what materials you will need

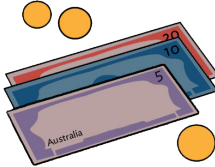


- how much your art project will cost.

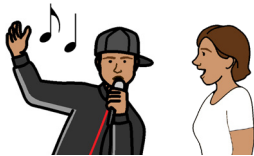
## If we choose you

If we choose you for this program, you will get

- up to 30 thousand dollars to make an art project



- up to 6 thousand dollars to help with access



- up to 2 thousand dollars for **peer support**
  - peer support can help you make your art



- up to 10 thousand dollars for **producer** and **production** support
  - producers and production help everyone work together



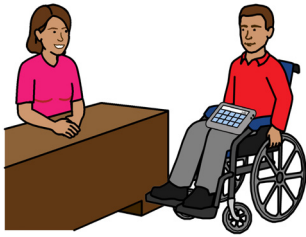
- a work space at North Melbourne Town Hall for up to 8 weeks

- **professional development**
  - professional development can help you get better as an artist.

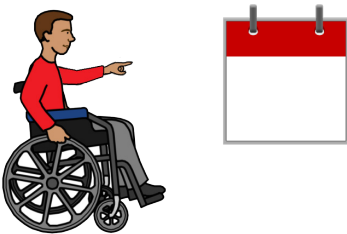
There will be 2 kinds of professional development.



You will meet with a digital developer to help understand how your art can be digital or online.



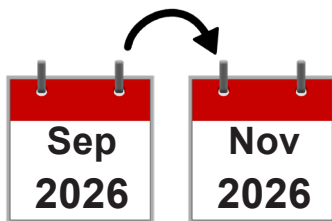
You will also meet with other disabled creative people to talk about your work.



If we choose you, you can decide when you want to make your art project.

## In 2026

You can make your art from



Monday 7 September to Sunday 1 November.

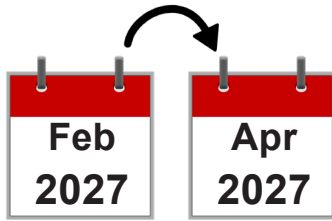


You can show your art to people we invite from

Monday 26 October to Sunday 1 November.

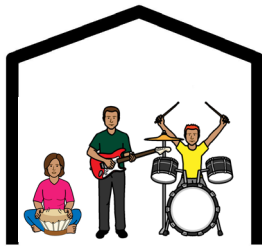


## In 2027



You can make your art from

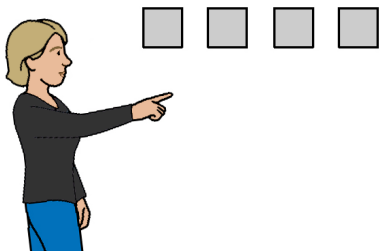
Monday 15 February to Sunday 11 April.



You can show your art to people we invite from

Monday 5 April to Sunday 11 April.

## Who will recommend the artists?



Our art experts will recommend up to 4 projects they like best.

Our art experts are



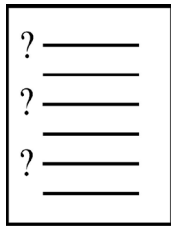
- 5 Deaf or Disabled artists
- the creative team from Arts House.



## How can you apply?

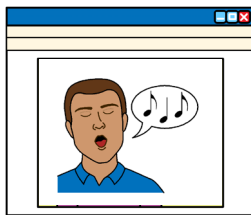
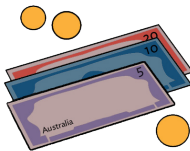
You can send us an **expression of interest**.

Expression of interest or EOI means you apply.



When you send us your EOI you **must**

- answer questions about your project
- tell us how much you think your project will cost
- show us art you have done in the past
- tell us about your support needs.



You can send us your EOI online.



[artshouse.com.au/artist-opportunities/the-warehouse-residency](http://artshouse.com.au/artist-opportunities/the-warehouse-residency)



You can also send us your EOI

- in writing



- in a video



- in an Auslan video



- in a voice recording.



You can ask someone to help you.



Contact information is at the end of this book.

## What is the final date to apply?

You **must** send us your EOI before 3 pm on



Thursday 7 August 2025.

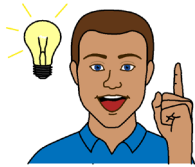
You can contact us if



- you want to apply in a different way
- you need more time because of a problem
  - for example, if you get sick.

## What are the questions you must answer?

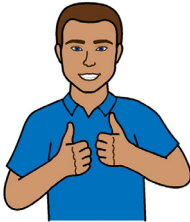
You **must** answer 4 questions in your EOI.



1. What is your idea for this art project?



2. How will you work on your art project each week?



3. How will our support help you become a better artist?



4. How will you make your art accessible?



You can also tell us anything else we should know about your art project.

## We might invite you to talk to us



If we like your project idea we might ask you to tell us more on



Thursday 25 September 2025

or



Friday 26 September 2025.



We will also talk to other artists we like before we choose the projects we will support.

## Where can you learn more?

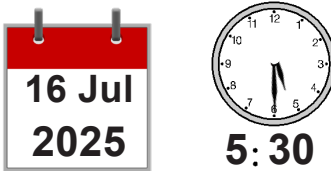


You can come to our information sessions.

### Online



Join our information session on Zoom on



Wednesday 16 July 2025 at 5.30 pm.



There will be an Auslan interpreter.

### In person



Join our information session and tour of the art space at North Melbourne Town Hall on



Friday 18 July 2025 from 11 am to 12.30 pm.

You can book the sessions on our website.

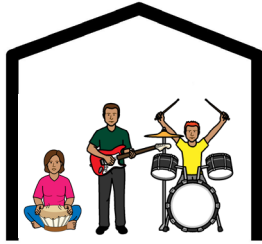


[artshouse.com.au/eoi-support-and-info-sessions](http://artshouse.com.au/eoi-support-and-info-sessions)



## Other important dates

### Showing



A **showing** is when you show your art to people we invite to the Arts House.



There will be showings in

- October 2026



- April 2027.



## More information

For more information contact Arts House.



Call                      03 9322 3720



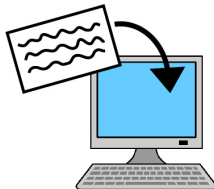
Text message      0447 570 178

We will answer your calls and messages  
Monday to Friday from 9 am to 5 pm.



Website

[artshouse.com.au/artist-opportunities/the-warehouse-residency](http://artshouse.com.au/artist-opportunities/the-warehouse-residency)



Email

[louana.sainsbury@melbourne.vic.gov.au](mailto:louana.sainsbury@melbourne.vic.gov.au)

## If you need help to apply

Arts Access Victoria can help you with your expression of interest or EOI.

Contact Sarah Fiddaman from Monday to Thursday.

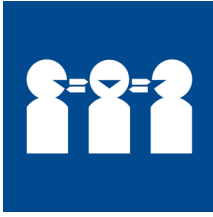


Call            03 8640 6007 (voice only).



Email            [sfiddaman@artsaccess.com.au](mailto:sfiddaman@artsaccess.com.au)

## If you need help with English



Use the free Translating and Interpreting Service or TIS to make a phone call.

You can call the TIS in your language.



Call 131 450

Give the TIS officer the phone number you want to call.

## If you need help to speak or listen



Use the National Relay Service to make a phone call.

You must sign up to the service first.



Website [accesshub.gov.au/nrs-helpdesk](https://accesshub.gov.au/nrs-helpdesk)



Call 1800 555 660

# Acknowledgement of Country

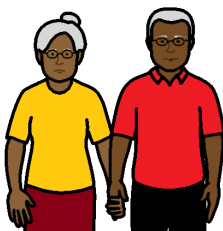


Arts House **respects** the **First Australians**.

The First Australians are the Aboriginal and Torres Strait Islander people.



Respect means we understand that we live and work on First Australians land.



In our area the First Australians are called the **Wurundjeri Woi-wurrung**.

We respect the First Australians

- culture
- language
- history.



## Notes

[illegible]

[illegible]

This Easy English document was created by Scope (Aust) Ltd. in June 2025 using Picture Communication Symbols (PCS). PCS is a trademark of Tobii Dynavox, LLC. All rights reserved. Used with permission. This document must not be sold to third parties. The images must not be reused without permission. For more information about the images, contact Scope on 1300 472 673 or visit [scopeaust.org.au](https://scopeaust.org.au)

Cover image credit: *1880: Manifesto of Silences Development Showing*, 2025 pictured Walter Kadiki. Photographed by Wild Hardt.

The Warehouse Residency is supported by City of Melbourne through Arts House. It has been assisted by the Australian Government through Creative Australia, its principal arts investment and advisory body.