

Cliffhanger

By Holly Childs and Angela Goh

Access Guide



Image: A figure towers over three climbing holds one yellow, one red, and one blue, on a white tarkett. The figure is only visible from ankles down, in blue jeans and white and black running shoes.

Updates to this document

Please note, this performance is a new work and changes are being made by artists until opening. We will endeavour to provide the latest access information on performances to ticket holders across key stages of rehearsal and presentation.

Arts House website will contain the most up to date version of this document and all ticket holders will be notified of any revisions made 3 days and 1 day prior to the event.

This document was created: 28 October 2024

Revision 1: 13 November 2024

Contents

Updates to this document	1
Where	3
When	3
Access Services	4
Performers	5
Sensory Elements	5
Sound	5
Lighting	5
Physical	6
Smell	6
Visual	6
Entry to space	7
Shocks or surprises	7
Audience experience	7
Social expectations	7
Performance expectations	7
Other	7
Content Warnings	7
General Notes	8
The Venue	9
Front Entrance	9
Accessible Entrances	10
Box Office	11
Ushers	11
Bar	12
Quiet Space	13
Bathrooms	14
The Warehouse	15
Warehouse Entrance	16
Transport	17
Tram	17
Train	17
Bus	17
Parking	17
COVID Safety	18

Where

Arts House

521 Queensberry Street

North Melbourne VIC

When

Wednesday 13 November – Sunday 17 November 2024

Wednesday – Saturday, 7.30pm

Sunday, 5.00pm

Duration: 50 minutes

Post-show Artist Talk – Thursday 14 November

Access Services



Assistance Animals are welcome.



Visual Rating 50% – this performance has music and sounds in the background.



Aural Rating 50% – contains both sound and visual components, but sight is not essential to be able to engage with the event.



This performance is fully wheelchair accessible. More information is provided further below in this guide about the accessible entrances at Arts House and bathrooms.



Quiet Space Available - The quiet space will be available for you to use before, during and after the show. More information about the quiet space can be found later in this guide.



Companion Card - Arts House supports the Companion Card program.

Performers

There is one performer – Angela Goh.



Image description: Angela looks directly into the camera. She has dark black hair that is secured with a purple clip and is wearing a grey t-shirt.

Sensory Elements

Sound

This work contains sound and music, including low and high frequencies and sudden sounds. The sound surrounds the entire performance space.

There are also moments of complete silence in the performance.

The performer will be talking on and off mic, and there might be moments that are hard to hear.

Digital and printed copies of a libretto with a complete script will be available.

Lighting

Lighting may change in intensity throughout the performance. There is no strobe or flashing lights. There is a short moment of black out.

The audience will be ambiently lit.

Physical

You might feel vibrations under the seats from the bass.

Smell

There are no scents or smells used in this work.

Visual

The performer, Angela, wears a peachy toned loose fitting singlet top, with a draped neckline. On the front of the top is a sublimation print of a photograph of a rock climbing wall. The wall's organic curves and dirty textures feature bright blue, green, red and yellow rock climbing holds. The back is made of lace, and an image of a diamond sword-like rock climbing feature is printed on top of the lace, revealing Angela's skin tone underneath the image.

Angela's pants are a relaxed fit. They are old, well-worn green army pants, with two pockets at the back. The right-hand side pocket at the front is ripped off to reveal a rust like pattern of browns and beige. There is a small tear in the left knee of her pants revealing a light beige patch with fine black stripes through it. Her belt is made from a similar fabric with the addition of a black checkered print. Angela wears beige socks folded down, which meet her silver and black Asics with white laces. On the laces are coloured beads - bright pink, red, purple, green, blue and chrome silver.

Part way through the performance, Angela puts a pair of chartreuse knee high boots, made from a fleece like fabric on her hands. They have a black kitten heel and a rounded toe. She also wears a pair of elbow length rubber gloves that are a very similar colour to her skin tone, but oversized and cartoon-like in shape.

The performance space contains white tarkett flooring, a plank of wood leaning against a window, and a few handwritten notes that may or may not be visible.

There will also be several objects placed around the performance space which the performer will interact with.

Audience Experience

Entry to space

On arrival, audience members will enter via the main Arts House building. The front of house team will guide people through an outdoor alleyway over to The Warehouse for the performance.

Entry is by the rear of the building via an accessible ramp. Images of the entrance are further below in this guide.

Shocks or surprises

There are sudden movements, sounds and lighting changes during the performance.

The performer will climb a plank of wood but will not be in danger.

Audience experience

There are moments when the performer approaches the audience. There is no interaction or conversation with the audience.

Social expectations

The audience will sit in rows of seats and will not be moving around.

There are no breaks in the show. There will be a lockout once the show begins. If you need to leave, you will not be allowed to re-enter. Please speak to the front of house staff for assistance.

Performance expectations

There is one performer in the performance space.

Text is spoken throughout the performance.

Other

Content Warnings

Cliffhanger contains loud music, sudden loud noises and lights that change colour and intensity.

General Notes

A recorded Acknowledgement of Country will play at the beginning of the performance.

Please note there is a strict lockout for Cliffhanger. No latecomers will be admitted.

Audiences will each be provided with a libretto, a booklet containing the performance script. A screen reader friendly version will also be available via QR code.

Toilets in The Warehouse will not be in use, but toilets in the Main Building will be accessible before and after the performance.

The Venue



Image: North Melbourne Town Hall features giant red letters that say ARTS HOUSE out the front of it.

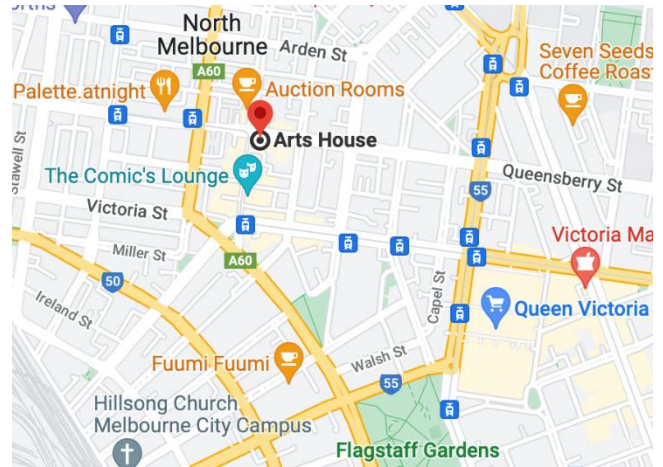


Image: a map of Arts House and its surrounding area. [Link to map.](#)

Front Entrance



Accessible Entrances



There are two Accessible Entrances. The first is on Errol St next to the Post Office.



Image: Errol Street entrance next to the Post office with wheelchair access.



Image: View of door entrance.

The second Accessible Entrance is towards the end of George Johnson Lane.



Image: View of George Johnson Lane from Errol St.

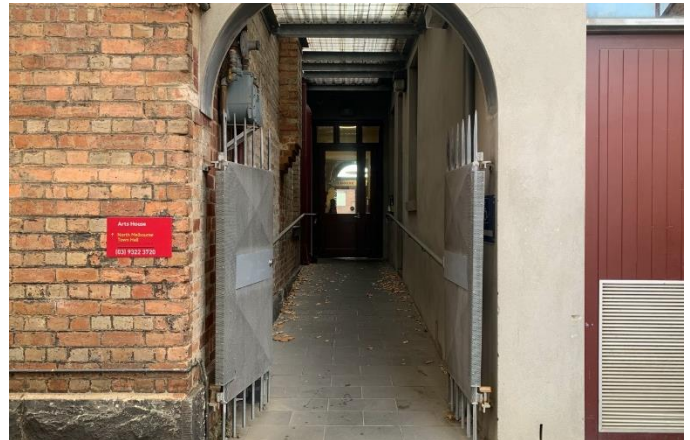


Image: View of the ramp leading from George Johnson Lane.

ARTS HOUSE

Box Office



Image: Reception desk is located in the foyer under the stairwell.

Ushers



Image: Three Arts House Ushers.

ARTS HOUSE

Ushers will be wearing black with an Arts House Logo on the left hand shoulder.

Bar



Image Description: Arts House Bar.

Bar staff will be wearing black with an Arts House Logo.

We have a range of alcoholic and non-alcoholic beverages for sale.

We are a cashless venue and accept EFTPOS, Visa and Mastercard payments.

ARTS HOUSE

Quiet Space



Arts House Quiet Space is located on Ground Level and is nearby reception and opposite the accessible bathrooms. It includes a range of seating options including soft furnishings, dimmable lights, sensory and stim objects. It is open during venue opening hours and events as a quiet space, prayer or parenting space.



Image: Corner of Quiet Space



Image: Quiet Space

ARTS HOUSE

Bathrooms

All bathrooms have Dyson hand dryers with sensor activation. There is an accessible bathroom that is single use on ground level opposite the Quiet Space. There is another accessible bathroom upstairs – this is accessible via lift or stairs.

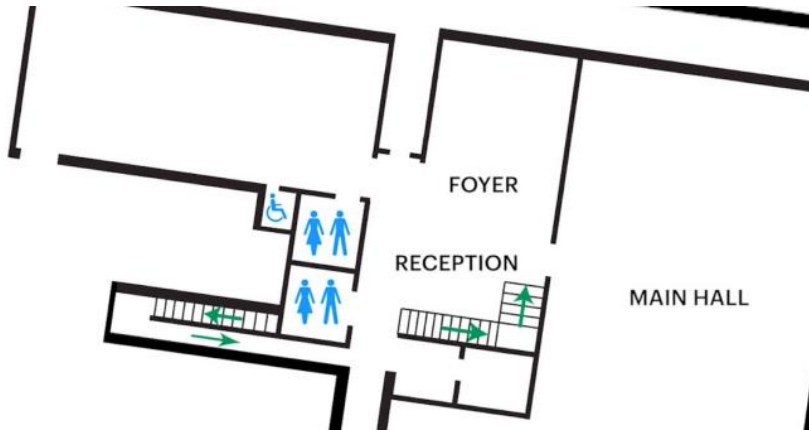


Image: Map of ground floor bathroom locations.

ARTS HOUSE

The Warehouse

The Warehouse is separate to the main building of Arts House. You can find the Warehouse by following George Johnson Lane as it snakes around the back of the main Arts House building.

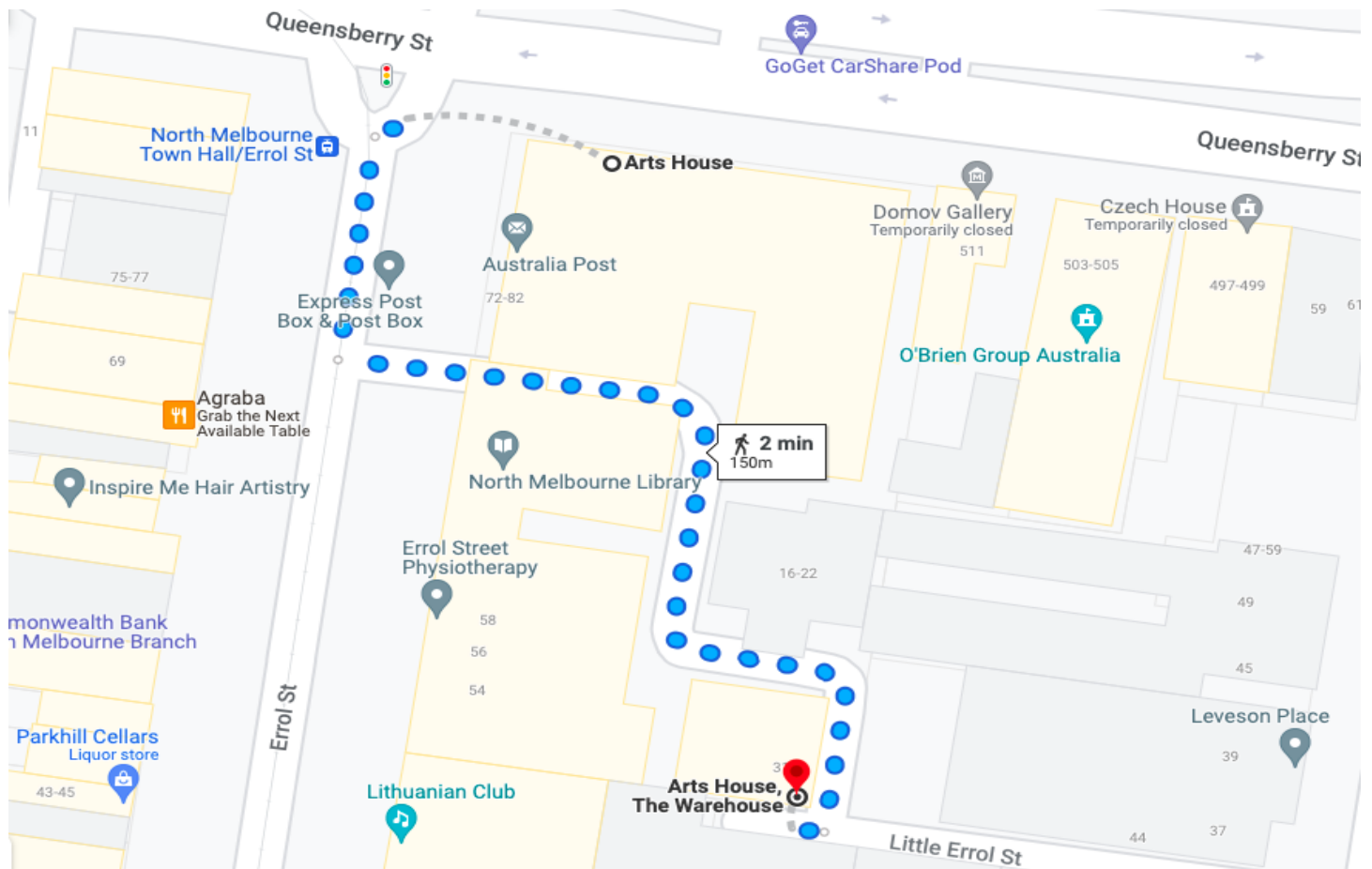


Image description: A screenshot of a map with walking directions from the front of the main building of Arts House to the Warehouse behind it.

ARTS HOUSE

Warehouse Entrance

The main Warehouse entrance has a wheelchair accessible ramp that is 1150mm wide. The bottom section of the ramp has a gradient of 1:6 and has no handrails. The upper section has a gradient of 1:12 and has handrails on both sides. This main entry to the Warehouse is through an automated, glass sliding door.



Image description: Ramp leading to The Warehouse.

ARTS HOUSE

Transport

Tram

Route 57 (High Floor trams only)

Stop 12, North Melbourne Town Hall.

Please note, this is not a wheelchair accessible tram

[GETTING TO ARTS HOUSE VIDEO LINK](#)

Train

Arts House is 1.1km from

North Melbourne Train Station,

approximately 16 minute walk

[North Melbourne Station Information](#)

1.2km from Flagstaff Station,

approximately 15 minute walk

[Flagstaff Station Information](#)

Bus

Bus number: 216

Parking

There is limited paid on-street parking on Queensberry Street and Errol Street.

There are two accessible on street car parking spaces on Queensberry Street (150m to our accessible Errol Street entrance) for holders of a Parking Permit for Disabled people.

ARTS HOUSE

COVID Safety

Please note: If you have a cough, sore throat, fever, shortness of breath or flu-like symptoms, you must not attend our venue or programs in person.

We will provide a refund if you need to cancel your attendance due to illness. Please contact us by 9am on the day of the event.

To minimise the risk of COVID-19 transmission, we advise all patrons, artists and staff to:

- Practise physical distancing where possible
- Practise good hygiene by washing and or sanitising your hands often
- Wear a mask as directed by Victorian Government guidelines

Throughout the venue you will find:

- hand sanitiser stations available
- masks available (ask one of our staff for assistance)
- increased signage to direct patron movement and avoid crowd congestion

We also ensure that spaces are well ventilated.

Staying COVID-safe remains important. We must all follow these steps:

- Follow the Victorian Government's measures on how to stay safe.
- When you cannot safely socially distance it is recommended to wear a well fitted mask where required.
- Practise COVID-safe hygiene protocols.