

The Bridal Lament

By Rainbow Chan

Access Guide



Image: Rainbow Chan. Still: Capsule 48

Image Description: A close up of a woman wearing a gold phoenix crown, looking down to the left of the picture. White teardrops adorn her cheeks, her lips are red. In the background are the red and purple neon lights of a cityscape.

Updates to this document

Please note, we will endeavour to provide the latest access information on performances to ticket holders across key stages of rehearsal and presentation.

Arts House website will contain the most up to date version of this document and all ticket holders will be notified of any final revisions made 3 days prior to the event.

This document was created: **1 December 2023**

Last updated: **7 May 2023**

Contents

| | |
|---------------------------------------|-----------|
| Updates to this document | 1 |
| Where | 3 |
| When | 3 |
| Access Services | 3 |
| Performers | 5 |
| Sensory Elements | 5 |
| Sound | 5 |
| Lighting..... | 6 |
| Physical | 6 |
| Smell | 6 |
| Visual..... | 6 |
| Entry to space | 7 |
| Shocks or surprises..... | 7 |
| Audience experience..... | 7 |
| Social expectations | 7 |
| Performance expectations..... | 8 |
| Other | 8 |
| Content Warnings..... | 8 |
| The Venue | 9 |
| Front Entrance..... | 9 |
| Accessible Entrances | 10 |
| Box Office | 11 |
| Ushers | 11 |
| Bar | 12 |
| Quiet Space..... | 13 |
| Bathrooms | 13 |
| Performance Space..... | 14 |
| Lift..... | 14 |
| Transport | 15 |
| Tram | 15 |
| Train | 16 |
| Bus | 16 |
| Parking | 16 |
| COVID Safety | 16 |

Where

Arts House
521 Queensberry Street
North Melbourne VIC

When

Wednesday 8 May, 7.30pm Preview

Thursday 9 May, 7.30pm Opening

Friday 10 May, 7.30pm

Saturday 11 May, 7.30pm

Wednesday 15 May, 7.30pm

Thursday 16 May, 7.30pm

Friday 17 May, 7.30pm

Saturday 18 May, 7.30pm

Sunday 19 May, 5.00pm

Duration: 70 minutes

Access Services



Auslan Interpreted Performance and Post show Artist Talk

Thursday 16 May, 7.30pm

Post show artist talk will be 30 minutes in duration.



Assistance Animal are welcome.



Visual Rating 50% – this performance has music and sounds.



Aural Rating 50% - this performance has both sound and visual components, but sight is not essential to be able to engage with the event.



This performance is fully wheelchair accessible.



Assistive Listening is available free of charge. Ask staff for assistance on arrival.

Performers

There is 1 performer in this show - Rainbow Chan.



Image description: A headshot of Rainbow Chan, a woman of Hong-Kong-Chinese descent. She has long black hair that is tied into a low bun at the base of her neck, and dark brown eyes. She wears a black turtleneck top and deep red lipstick. She is gazing to the right, off-camera, in a neutral expression.

Sensory Elements

Sound

Sound plays a prominent role in the production, as it is in the form of a live song cycle performed to audio backing tracks. The performer, Rainbow, is mic-ed throughout the show, and sometimes uses various vocal effects, including autotune, reverb, and vocal looping, when singing.

Please be aware that the music volume may reach higher levels at times. Twice there are sequences of loud, layered sounds that have a duration of about 60 seconds each. They have rumbles, high sounds and a lot of bass. This occurs during sections of rapidly changing projection also.

The performer, Rainbow, delivers songs in both English and Weitouhua (a Cantonese dialect spoken in specific parts of Hong Kong). Live Weitouhua performances by Rainbow and recorded voiceovers of Rainbow's mother speaking in Weitouhua are accompanied by projected subtitles offering English translations or Rainbow speaking the English translations.

Additionally, recorded voiceovers of Rainbow's mother speaking in Weitouhua are integrated into certain sections of the show.

Lighting

Lighting undergoes frequent changes throughout the performance, incorporating haze consistently. Flashing lights accompany louder musical segments, and between songs, there are a mix of swift and gradual lighting transitions.

Two video projectors are directed toward distinct areas of the performance space. Brief flashing audience-angled lighting occurs during specific songs 'Bridge of Forgetting' and 'Pomelo Water'. There are blackouts and low-light moments.

Physical

It may be possible to feel vibrations from the sub speakers through the floor at loud points in the music and during the layered sound sections mentioned above. There is no audience interaction.

Smell

There are no scents or smells used in the show.

Visual

The performer, Rainbow, wears a sleeveless silver dress with reflective qualities, that shimmer under the light. Her hair is worn in a single long plait woven with red ribbons. A layered beaded curtain floats above a stepped platform on the right-hand side of the stage.

Throughout the performance, Rainbow engages with the platform, dances, stands, and moves through the beaded curtains, capturing light and projections.

On the back wall, English surtitles in white and moving images are projected against a black wall. Surtitles during dialogue scenes feature yellow typography. In live singing segments, vibrant and colourful moving images are projected onto the wall or the beaded curtain. The projection on the beaded curtain has moments of very layered, busy imagery.

Audience Experience

Entry to space

Entry to the performance is via the reception and into the main hall. Audiences won't be asked to do anything on entering. Merchandise may be sold at a table set up in the foyer.

Shocks or surprises

There are loud moments during the music but these are mostly built to rather than sudden.

Audience experience

Rainbow may come close to the front row of the audience at the beginning and end of the show and offer eye contact. You do not have to make eye contact with Rainbow if you do not wish to.

Social expectations

There is no allocated seating for this performance, please let the front of house staff know if you would be most comfortable in a particular spot before the doors open.

There is no lock out (or lock in) for this performance. Audience members are welcome to enter at specific moments of the show to minimise disruption, as directed by front of house staff.

Performance expectations

There is only one performer on the stage, Rainbow Chan. Rainbow is a woman of Hong-Kong-Chinese descent with long black hair and dark brown eyes. She wears a sleeveless silver dress with reflective qualities, that shimmer under the light. Her hair is worn in a single long plait woven with red ribbons.

There is both dialogue and songs performed live in this show. The performer, Rainbow, delivers songs in both English and Weitouhua (a Cantonese dialect spoken in specific parts of Hong Kong). Live Weitouhua performances by Rainbow are accompanied by projected surtitles offering English translations. Additionally, recorded voiceovers of Rainbow's mother speaking in Weitouhua are integrated into certain sections of the show.

The performance explores an obsolete Weitou bridal ritual which entailed a public performance of grief in which a bride wept and sang in front of her family and friends.

Other

Content Warnings

Use of haze – Throughout the entire show.

Loud sounds – There are loud sounds during the songs but these are mostly built to rather than sudden.

Flashing projected imagery – Projected on the beaded curtain after the song 'Smoke and Pepper'

Flashing lights including audience-angled lighting.

General Notes

There is an Acknowledgement of Country delivered by the performer as part of the opening of the show.

The Venue



Image: North Melbourne Town Hall features giant red letters that say ARTS HOUSE out the front of it.

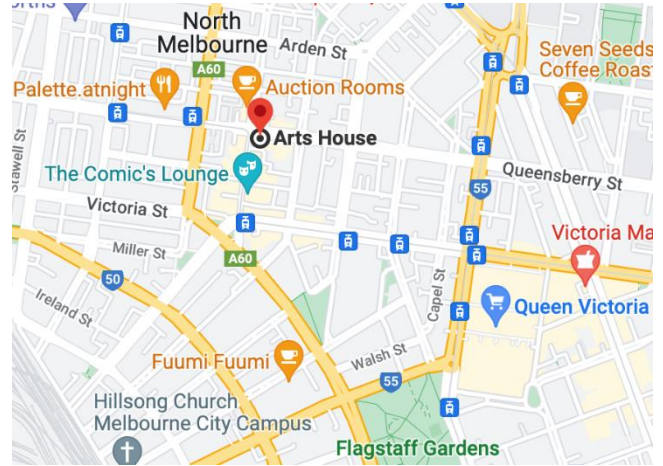


Image: a map of Arts House and its surrounding area. [LINK TO MAP](#)

Front Entrance



Accessible Entrances



There are two Accessible Entrances. The first is on Errol St next to the Post Office.



Image: Errol Street entrance next to the Post office with wheelchair accessible ramp or two steps with grab rails.



Image: View of door entrance.

The second Accessible Entrance is towards the end of George Johnson Lane.



Image: View of George Johnson Lane from Errol St. The laneway passes through an archway with a brick wall at the end.

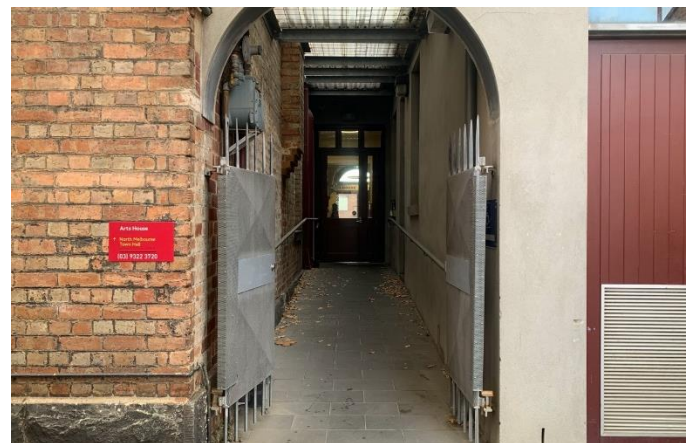
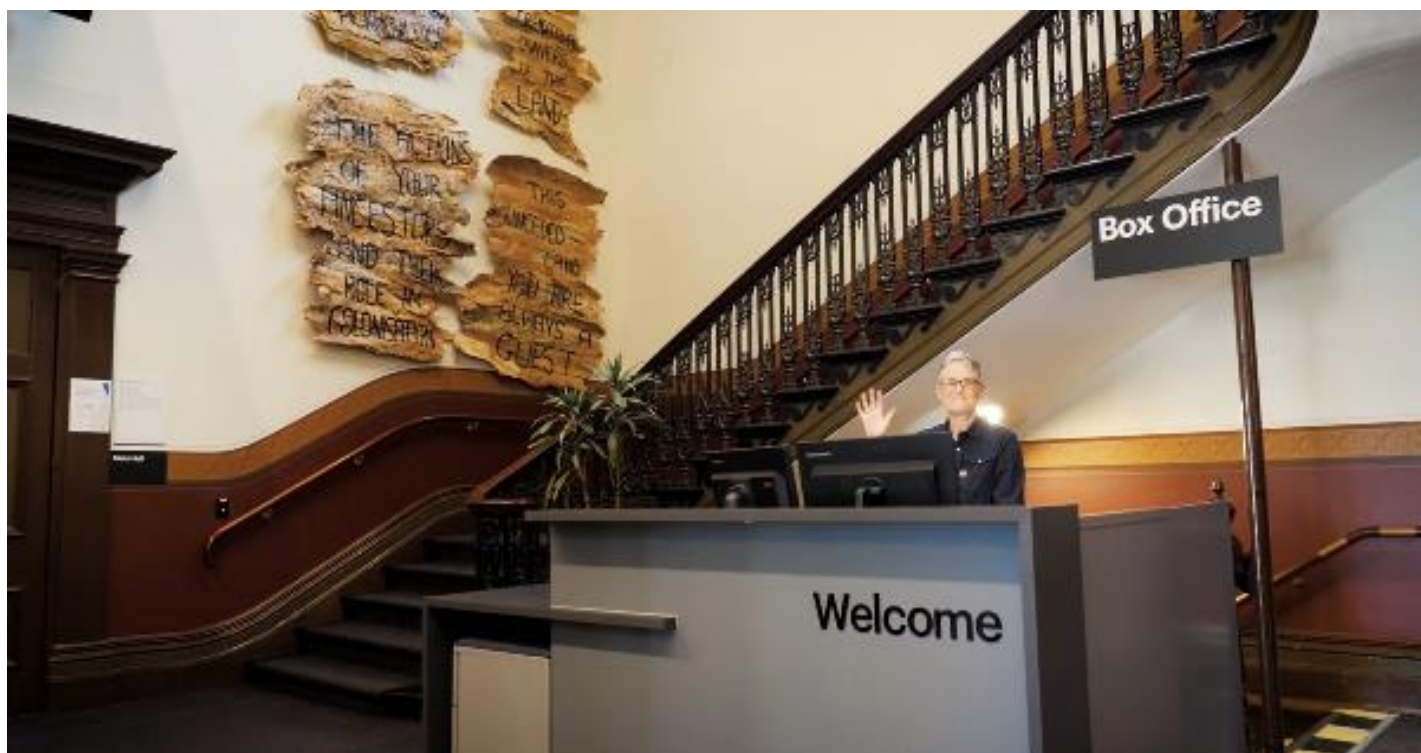


Image: view of the ramp leading from George Johnson Lane to the automated door which opens into the Arts House foyer.

Box Office



Box Office is located in the foyer under the stairwell.

Ushers



Ushers will be wearing black with an Arts House Logo on the left hand shoulder.

Bar



Bar staff will be wearing black with an Arts House Logo.

We have a range of alcoholic and non-alcoholic beverages for sale.

We are a cashless venue and accept EFTPOS, Visa and Mastercard payments.

Quiet Space



Arts House Quiet Space is located on Ground Level and is nearby reception and opposite the accessible bathrooms. It includes a range of seating options including soft furnishings, dimmable lights, sensory and stim objects. It is open during venue opening hours and events as a quiet space, prayer or parenting space.



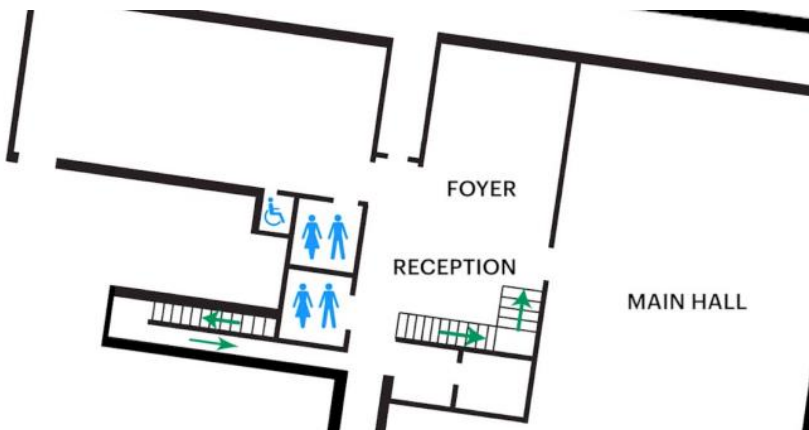
Image: Quiet space with lights dimmed



Image: Quiet space kitchenette and book shelf

Bathrooms

All bathrooms have Dyson hand dryers with sensor activation. There is an accessible bathroom that is single use on ground level opposite the Quiet Space. There is another accessible bathroom upstairs – this is accessible via lift or stairs.



ARTS HOUSE

Performance Space

The Performance is in the Main Hall.

It is on the ground floor.

It is to the left of the box office desk and right of the bar.

An artist statement is available on signage and warnings on the door.



Lift

The lift is located behind reception desk in the foyer.

The closest entry to the lift is via George Johnson Lane.

ARTS HOUSE



Transport

Tram

Route 57 (High Floor trams only)

Stop 12, North Melbourne Town Hall.

Please note, this is not a wheelchair accessible tram

[GETTING TO ARTS HOUSE VIDEO LINK](#)

ARTS HOUSE

Train

Arts House is 1.1km from
North Melbourne Train Station,
approximately 16 minute walk

[North Melbourne Station Information](#)

1.2km from Flagstaff Station,
approximately 15 minute walk

[Flagstaff Station Information](#)

Bus

Bus number: 216

Parking

There is limited paid on-street parking on Queensberry Street and Errol Street.

There are two accessible on street car parking spaces on Queensberry Street (150m to our accessible Errol Street entrance) for holders of a Parking Permit for Disabled people.

COVID Safety

Please note: If you have a cough, sore throat, fever, shortness of breath or flu-like symptoms, you must not attend our venue or programs in person.

We will provide a refund if you need to cancel your attendance due to illness. Please [contact us](#) by 9am on the day of the event.

To minimise the risk of COVID-19 transmission, we advise all patrons, artists and staff to:

- Practise physical distancing where possible
- Practise good hygiene by washing and or sanitising your hands often
- Wear a mask as directed by Victorian Government guidelines

Throughout the venue you will find:

ARTS HOUSE

- hand sanitiser stations available
- masks available (ask one of our staff for assistance)
- increased signage to direct patron movement and avoid crowd congestion

We also ensure that spaces are well ventilated.

Staying COVID-safe remains important. We must all follow these steps:

- Follow the Victorian Government's measures on how to stay safe.
- Wear face masks where required or when you cannot safely socially distance.
- Practice COVID-safe hygiene protocols.
- Test for COVID and get free rapid antigen tests at nominated City of Melbourne customer service and library sites.