

# Mainit Fantasy

By Saluhan Collective x Liquid Architecture

## Access Guide



**Image:** A landscape photograph of the front of a light blue church. A low fence borders the building. On the right-hand side, a road runs parallel to the church and a tall brick building with an election banner signage hanging from a balcony. The photograph is highly-saturated in the colours of yellow, blue, and green with a grainy texture. The words 'Mainit Fantasy' are superimposed on the image in red letters with small yellow lines running through each letter.

## **Updates to this document**

Please note, this performance is a new work and changes are being made by artists until opening. We will endeavour to provide the latest access information on performances to ticket holders across key stages of rehearsal and presentation.

Arts House website will contain the most up to date version of this document and all ticket holders will be notified of any revisions made 3 days and 1 day prior to the event.

This document was created: 22 January 2024

Revision 1: 20 February 2024

# Contents

Updates to this document .....	2
Where .....	4
When .....	4
Access Services .....	4
Performers .....	6
Running Order .....	8
Sensory Elements .....	9
Entry to space .....	9
Shocks or surprises .....	10
Audience experience .....	10
Social expectations .....	10
Performance expectations .....	10
Other .....	11
Content Warnings .....	11
The Venue .....	11
Front Entrance .....	11
Accessible Entrances .....	12
Box Office .....	13
Ushers .....	13
Bar .....	14
Quiet Space .....	15
Bathrooms .....	15
The Supper Room .....	16
Lift .....	17
Transport .....	17
Tram .....	17
Train .....	18
Bus .....	18
Parking .....	18
COVID Safety .....	18

## Where

Supper Room and Terrace

Arts House

521 Queensberry Street

North Melbourne VIC

## When

Saturday 24 February 2024

9:00pm – 11:00pm (doors open at 8.30pm)

Duration: 120 minutes

## Access Services



Assistance Animal are welcome.



Visual Rating 50% – contains both sound and visual components, but hearing is not essential to be able to engage with the event.



Aural Rating 50% – contains both sound and visual components, but sight is not essential to be able to engage with the event.



This performance is fully accessible for wheelchair users.



Companion Card – You can book your complimentary companion ticket online or over the phone when purchasing tickets to any show. Contact our box office team for more information.



Quiet Space – located on Ground Level near reception, this is a shared space suitable for recovery from sensory overload, prayer, or parenting. It features a range of seating options, dimmable lights, sensory and stimming objects. Anyone is welcome to access this space during venue operating hours and events.



## Performers

Varsha Ramesh – Creative Producer, Arts House



Catherine Ortega-Sandow – artist and host



MJ Flamiano – artist and host



Kenneth Suico – artist and performer



Mariam Ella Arcilla – artist and performer



L-R: Neil Cabatingan (Kuya Neil), Raquel Solier (Various Asses) and Del Lumanta – artists and DJs



## Running Order

8:30pm – doors open and light refreshments available

9:00pm – Acknowledgement of Country and introduction by Varsha Ramesh

9:05pm – introduction by Catherine Ortega-Sandow and MJ Flamiano

9:10pm – performance reading by Mariam Ella Arcilla

9:30pm – performance by Kenneth Suico

10:15pm – DJ sets by Kuya Neil x Del Lumanta x Various Asses

11:00pm – event concludes



## Sensory Elements

### Supper Room, Basement

- **Sound:** There will be consistent sound throughout the event. This includes presentations, film screening dialogue, and loud dance and metal music.
- **Lighting:** Dim, coloured lighting that may change during the event. There will be no strobes or flashing.
- **Physical:** Vibration will be felt from the music. There may be potential for physical interaction between the audiences as everyone can freely move around throughout the event. There will be a bar and tables with light catering in the Supper Room.
- **Smell:** There will be a light, sweet scent of bread from the installation. There might be a light scent of mango from a drink served on arrival.
- **Visual:** There will be an art installation and sculptures in the space. A large screen will be used to screen a film and for colourful, moving visuals during the DJ sets.

### Terrace, Level 1

- **Sound:** There will be soft singing to an instrumental backing track.
- **Lighting:** Dim, natural light with one spotlight aimed at the performer.
- **Physical:** This performance is outdoors. Evening weather is expected to be mild.
- **Smell:** There are no scents or smells in this work.
- **Visual:** There will be a performance by a male artist in shorts seated in a clam washing himself with water while singing.

## Audience Experience

### Entry to space

This event will mainly take place in the Supper Room at Arts House. This space is located in the basement of the main building.

Access to the space:

- The Supper Room can be accessed either via lift or stairs from the foyer area.
- There are 20 stairs to the Supper Room with grab rails either side. Please note - the staircase has a low archway, and it is wide, so grab rails are not able to be used on both sides at the same time
- Entry to Supper Room is through a glass door which is 150cm wide

One performance will take place on the terrace located on Level 1 of the main building.

Access to the space:

- The terrace can be access either via lift or stairs from the foyer area.
- The stairs to Level 1 have grab rails on either side. Please note - this staircase is very wide, so grab rails are not able to be used on both sides at the same time.

Doors open to this event at the same time as a performance in the Main Hall concludes. There will be some overlap of audiences but it will be managed by front of house staff.

### **Shocks or surprises**

There are currently no shocks or surprises.

### **Audience experience**

There is no expectation for audiences to be close and can experience the performances from any distance that is comfortable.

This event accompanies the *Mainit Illusion* exhibition. Audiences are welcome to explore the exhibition during the event at their own pace. Please see *Mainit Illusion* access guide for more information.

### **Social expectations**

The audience will be able to move freely around the space. There will be tables and chairs available in the Supper Room, and relaxed spaces in the foyer.

### **Performance expectations**

During the performances, the hosts will introduce the artists. For the second performance, the hosts will guide the audience to move up to the terrace either via the lift or the stairs in the foyer with the help of Front of House staff.

The performances are not interactive and audience members are not expected to participate.

## Other

### Content Warnings

- Themes of colonisation

### The Venue



Image: North Melbourne Town Hall features giant red letters that say ARTS HOUSE out the front of it.



Image: a map of Arts House and its surrounding area. [LINK TO MAP](#)

### Front Entrance



## Accessible Entrances



There are two Accessible Entrances. The first is on Errol St next to the Post Office.



Image: Errol Street entrance next to the Post office with wheelchair accessible ramp or two steps with grab rails.



Image: View of door entrance.

The second Accessible Entrance is towards the end of George Johnson Lane.



Image: View of George Johnson Lane from Errol St. The laneway passes through an archway with a brick wall at the end.

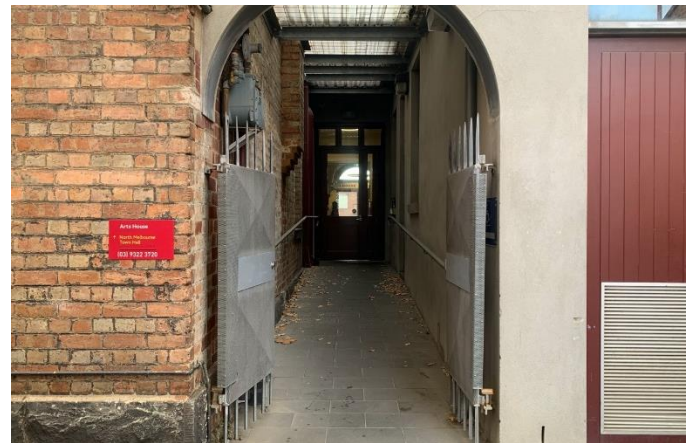
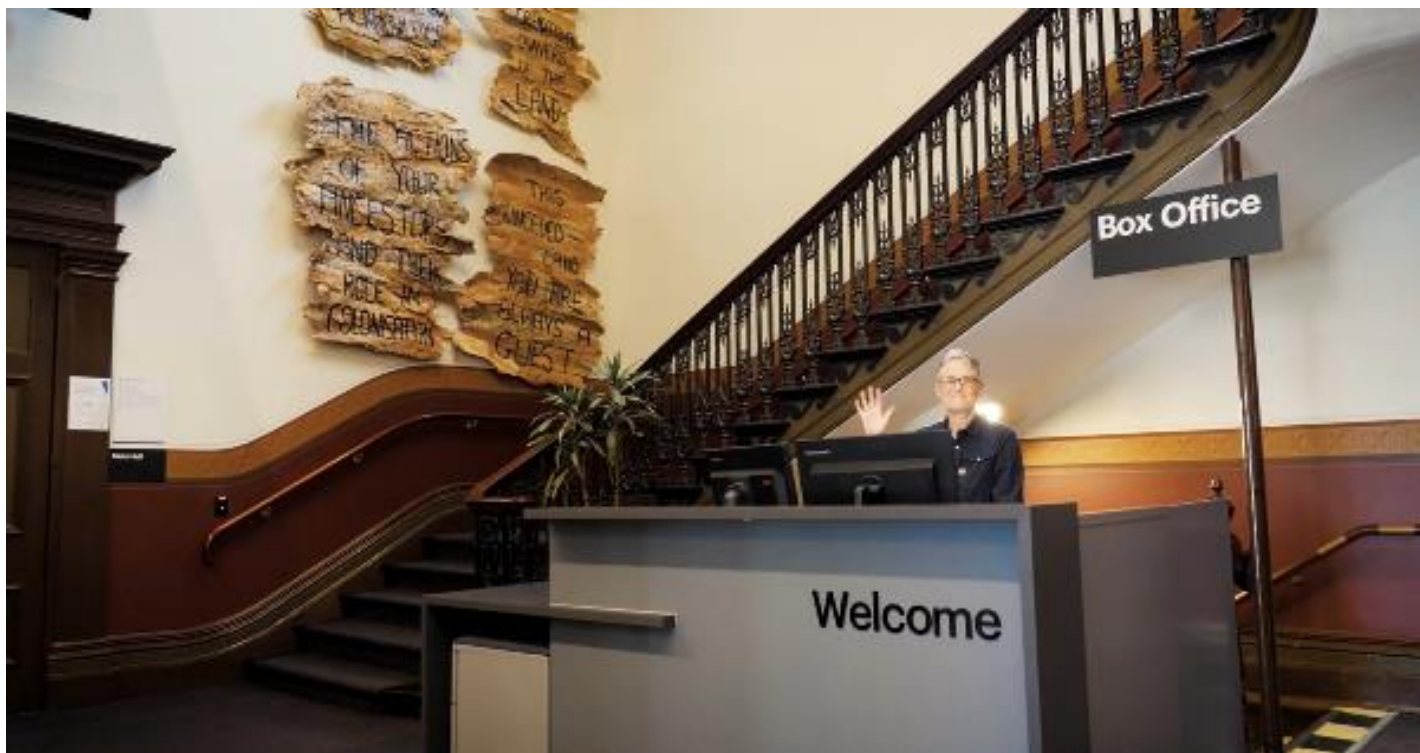


Image: view of the ramp leading from George Johnson Lane to the automated door which opens into the Arts House foyer.



## Box Office



Box Office is located in the foyer under the stairwell.

## Ushers



Ushers will be wearing black with an Arts House Logo on the left hand shoulder.

## Bar



Bar staff will be wearing black with an Arts House Logo.

We have a range of alcoholic and non-alcoholic beverages for sale.

We are a cashless venue and accept EFTPOS, Visa and Mastercard payments.

## Quiet Space



Arts House Quiet Space is located on Ground Level and is nearby reception and opposite the accessible bathrooms. It includes a range of seating options including soft furnishings, dimmable lights, sensory and stim objects. It is open during venue opening hours and events as a quiet space, prayer or parenting space.



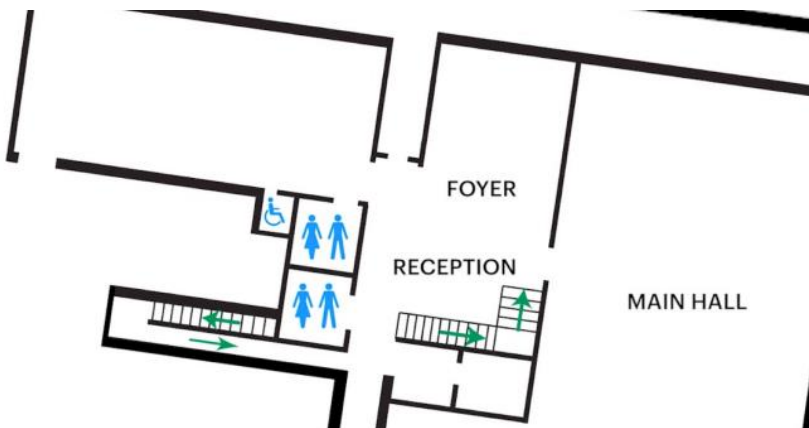
Image: Quiet space with lights dimmed



Image: Quiet space kitchenette and book shelf

## Bathrooms

All bathrooms have Dyson hand dryers with sensor activation. There is an accessible bathroom that is single use on ground level opposite the Quiet Space. There is another accessible bathroom upstairs – this is accessible via lift or stairs.





# ARTS HOUSE

## The Supper Room

The main event is in the Supper Room.

It is in the basement.

You can access these spaces via stairs with hand-railing or the lift.

An artist statement is available on signage and warnings on the door.





# ARTS HOUSE

## Lift

The lift is located behind reception desk in the foyer.

The closest entry to the lift is via George Johnson Lane.



## Transport

### Tram

Route 57 (High Floor trams only)

Stop 12, North Melbourne Town Hall.

Please note, this is not a wheelchair accessible tram

# ARTS HOUSE

## [GETTING TO ARTS HOUSE VIDEO LINK](#)

### Train

Arts House is 1.1km from  
North Melbourne Train Station,  
approximately 16 minute walk

[North Melbourne Station Information](#)

1.2km from Flagstaff Station,  
approximately 15 minute walk

[Flagstaff Station Information](#)

### Bus

Bus number: 216

### Parking

There is limited paid on-street parking on Queensberry Street and Errol Street.

There are two accessible on street car parking spaces on Queensberry Street (150m to our accessible Errol Street entrance) for holders of a Parking Permit for Disabled people.

### COVID Safety

Please note: If you have a cough, sore throat, fever, shortness of breath or flu-like symptoms, you must not attend our venue or programs in person.

We will provide a refund if you need to cancel your attendance due to illness. Please [contact us](#) by 9am on the day of the event.

To minimise the risk of COVID-19 transmission, we advise all patrons, artists and staff to:

- Practise physical distancing where possible
- Practise good hygiene by washing and or sanitising your hands often

# ARTS HOUSE

- Wear a mask as directed by Victorian Government guidelines

Throughout the venue you will find:

- hand sanitiser stations available
- masks available (ask one of our staff for assistance)
- increased signage to direct patron movement and avoid crowd congestion

We also ensure that spaces are well ventilated.

Staying COVID-safe remains important. We must all follow these steps:

- Follow the Victorian Government's measures on how to stay safe.
- Wear face masks where required or when you cannot safely socially distance.
- Practise COVID-safe hygiene protocols.
- Test for COVID and get free rapid antigen tests at nominated City of Melbourne customer service and library sites.