



The Warehouse Residency for Deaf and Disabled artists

Arts House



Easy English

Help with this book



You can get someone to help you

- understand this book
- find more information.



About this book



This book is from

- Arts House

and



- Arts Centre Melbourne.



This book is about

The Warehouse Residency.

What is The Warehouse Residency?

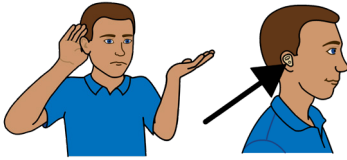
The Warehouse Residency is a program for artists who

- are Deaf

or

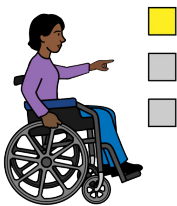
- have a disability.

We call it **the program** in this book.



The program supports these artists to

- make new and different art
- choose the art they want to make
- work in a safe place.



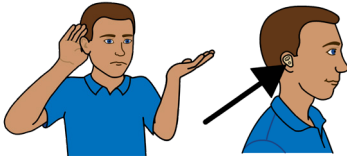
Who can apply?



You **must** be an artist who lives in Victoria.

We support all kinds of artist, including

- Deaf artists
- people with disability
- people with illness that will **not** go away
- **neurodivergent** people.



Neurodivergent means your brain works in a different way.

For example, if you are autistic.



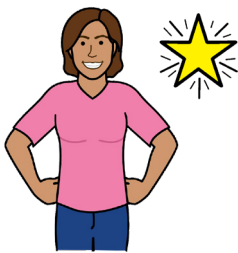
The Warehouse Residency is for people who already work as artists.

What should your art project be?

We choose art projects that



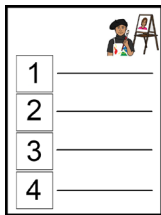
- are **accessible**
 - accessible means it is easy for everyone to go to and enjoy



- are **brave**
 - brave means you dare to try something new or different



- will give you new skills.

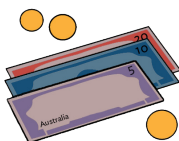


You should have a good plan about

- how you can make your art project happen



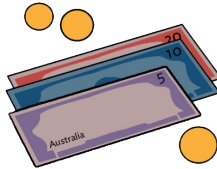
- what materials you will need



- how much your art project will cost.

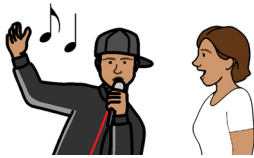
If we choose you

If we choose you for this program, you will get



- up to **30 thousand** dollars to make an art project

- up to **5 thousand** dollars to help with access



- up to **2 thousand** dollars for **peer support**
 - peer support can help you make your art



- up to **10 thousand** dollars for a **producer**
 - a producer helps everyone work together



- **professional development**
 - professional development can help you get better as an artist



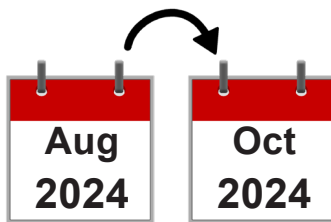
- a work space at North Melbourne Town Hall for up to 8 weeks.



If we choose you, you can decide when you want to make your art project.

In 2024

You can make your art from



Monday 19 August to Sunday 6 October.

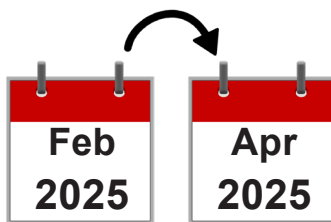


You can show your art to people we invite from

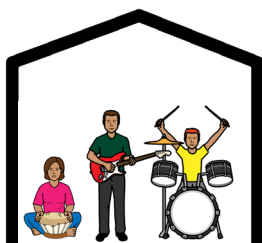
Monday 7 October to Sunday 13 October.

In 2025

You can make your art from



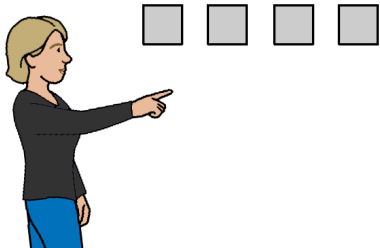
Monday 24 February to Sunday 13 April.



You can show your art to people we invite from

Monday 14 April to Sunday 20 April.

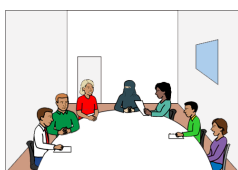
Who will choose the artists?



Our art experts will choose up to 4 projects they like best.

Our art experts are

- 4 Deaf or Disabled artists
- the creative team from Arts House and Arts Centre Melbourne.

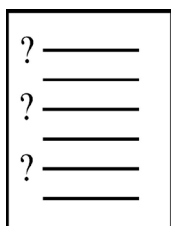


How can you apply?



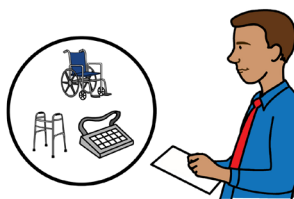
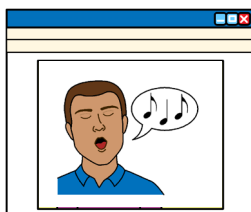
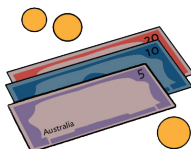
You can send us an **expression of interest**.

Expression of interest or EOI means you apply.



When you send us your EOI you **must**

- answer questions about your project
- tell us how much you think your project will cost
- show us art you have done in the past
- tell us about your support needs.



You can send us your EOI online.

artshouse.com.au/artist-opportunities/the-warehouse-residency



You can ask someone to help you.



You can also send us your EOI

- in writing



- in a video



- in an Auslan video



- in a voice recording.

What is the final date to apply?

You **must** send us your EOI **before 3 pm** on



Tuesday 23 January 2024.

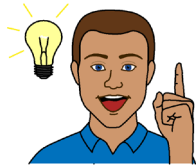
You can contact us if

- you want to apply in a different way
- you need more time because of a problem
 - for example, if you get sick.



What are the questions you must answer?

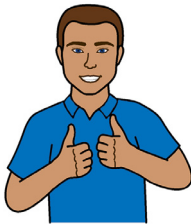
You **must** answer 4 questions.



1. What is your idea for this art project?



2. How will you work on your art project each week?



3. How will our support help you become a better artist?



4. How will you make your art accessible?



You can also tell us anything else we should know about your art project.

We might invite you to talk to us



If we like your project idea we might ask you to tell us more on



Monday 18 March 2024

or



Tuesday 19 March 2024.



We will also talk to other artists we like before we choose the winners.

Where can you learn more?



You can come to our information sessions.

Online



Join our information session on Zoom on



Thursday 30 November 2023 at 5.30 pm.



There will be an Auslan interpreter.

In person



Join our information session at North Melbourne Town Hall on



Thursday 7 December at 11 am.

You can book the sessions on our website.



artshouse.com.au/eoi-support-and-info-sessions

Other important dates

Shows



Show means you can show your art to people we invite to the Arts House.



There will be a show

- in October 2024.



- in June 2025.



More information

For more information contact Arts House.



Call 03 9322 3720



Text message 0447 570 178

We will answer your calls and messages
Monday to Friday from 9 am to 5 pm.



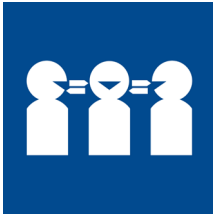
Website

artshouse.com.au/artist-opportunities/the-warehouse-residency



Email

Sarah.Rowbottam@melbourne.vic.gov.au



If you do not speak English

Use the free Translating and Interpreting Service or TIS.



Call 131 450

Give the TIS officer the phone number you want to call.



If you need help to speak or listen

The National Relay Service can help you make a phone call.



Call 1800 555 660



Website accesshub.gov.au/nrs-helpdesk

Give the relay officer the phone number you want to call.

Acknowledgement of Country

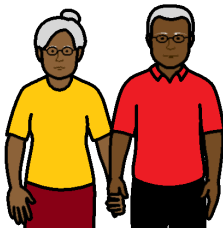
Arts House **respects** the **First Australians**.



The First Australians are the Aboriginal and Torres Strait Islander people.



Respect means we understand that we live and work on First Australians land.



In our area the First Australians are called the Wurundjeri Woi-wurrung.



We respect the First Australians

- culture
- language
- history.



Notes

Notes

This Easy English document was created by Scope (Aust) Ltd. in November 2023 using Picture Communication Symbols (PCS). PCS is a trademark of Tobii Dynavox, LLC. All rights reserved. Used with permission. Cover image: I Am (Not) This Body by Leisa Prowd. Image credit: Tom Noble.

This document must not be sold to third parties. The images must not be reused without permission. For more information about the images, contact Scope on 1300 472 673 or visit scopeaust.org.au

