

# The Nervous Atmosphere

## By Zoë Barry

### Access Guide



Image: Zoë is standing against a black background wearing a black top. She has long, red, curly hair. She is holding her hands out beside her. She appears to be shaking her head and moving her hands as her hands and hair are blurred.

**Image Credit:** Pia Johnson

### Updates to this document

Please note, this performance is a new work and changes are being made by artists until opening. We will endeavour to provide the latest access information on performances to ticket holders across key stages of rehearsal and presentation.

Arts House website will contain the most up to date version of this document and all ticket holders will be notified of any revisions made 3 days and 1 day prior to the event.

This document was created: 5 September 2023

## Contents

<b>Where</b> .....	4
<b>When</b> .....	4
<b>Access Services</b> .....	4
<b>Performers</b> .....	6
<b>Sensory Elements</b> .....	6
Sound.....	6
Lighting .....	6
Physical.....	7
Smell .....	7
Visual .....	7
Entry to space .....	7
Shocks or surprises.....	8
Audience experience.....	8
Social expectations .....	8
Performance expectations .....	8
Content Warnings .....	8
General Notes .....	8
<b>The Venue</b> .....	10
<b>Front Entrance</b> .....	10
<b>Accessible Entrances</b> .....	11
<b>Box Office</b> .....	12
<b>Ushers</b> .....	12
<b>Bar</b> .....	13
<b>Quiet Space</b> .....	14
<b>Bathrooms</b> .....	14
<b>Door to Studio 1</b> .....	15
<b>Door to Main Hall</b> .....	15
<b>Lift</b> .....	17
<b>Transport</b> .....	17
<b>Tram</b> .....	17
<b>Train</b> .....	18
<b>Bus</b> .....	18
<b>Parking</b> .....	18
<b>COVID Safety</b> .....	18

## Where

Arts House  
521 Queensberry Street  
North Melbourne

## When

Wednesday 13 September, 7.30pm

Thursday 14 September, 7.30pm

Friday 15 September, 7.30pm

Saturday 16 September, 7.30pm

Sunday 17 September, 5pm

**Duration: 70 minutes, no interval**

**Post show discussion:** Thursday 14 September

## Access Services



### **Auslan Interpreted Performance**

Thursday 14 September, 7.30pm

The post show discussion will also be Auslan interpreted after this performance



### **Relaxed Performance**

Sunday 17 September, 5pm

For this performance the house lights will be up, there will be no sudden black outs, and the strobing effects will be modified.



Assistance Animals are welcome.



Assistive Listening is available free of charge. Ask staff for assistance on arrival.



Visual Rating 50% – this performance has music and sounds in the background.



This performance is fully wheelchair accessible.

## Performers

There is one performer in show



Image of Zoe Barry

Image credit: Lakshal Perera

## **Sensory Elements**

### **Sound**

The live music score is created by looping cello. It includes some low bass frequencies and rumbling. There are no high frequency sounds above 12,000Hz.

There are three sudden loud sound effects of thunder.

Sometimes the recording of the voice moves between the speakers, so it seems detached from the body on the stage.

### **Lighting**

The lighting changes in colour and intensity throughout the work.

There are glowing neon lights designed to look like lightning.

The space is often quite dark.

There are three strobing effects to recreate the experience of a lightning strike.

There are several blackouts.

For the relaxed performance on September 17 the house lights will be up, there will be no sudden black outs, and the strobing effects will be modified.

### **Physical**

The audience is sitting in the seating bank, with some extra seating on the floor by the front of the stage, in bean bags and low banana lounges. The sense of vibration from the sound and the lighting will be quite palpable in the body. The performer is close to the audience at the beginning of the work, and then seated at the back of the stage for the rest of the work.

### **Smell**

No smells.

### **Visual**

The space has dark edges, and a floor of clouds. A large light sculpture made of ropes and neon lights is revealed in the middle of the space. The sound, lighting and set are designed to create a hypnotic, poetic effect on the audience.

## **Audience Experience**

### **Entry to space**

The audience enters from the foyer and can choose to sit in the seating bank or on the comfortable seating on the floor by the stage. Nothing will be asked of the audience members during the performance. The audience will be encouraged by the ushers to make themselves comfortable for the performance and are welcome to take off their shoes.

### **Shocks or surprises**

There are three lightning effects in the work, which all happen within the first 15 minutes, and include a loud sound and a strobe/modified strobe effect.

### **Audience experience**

The performer may make eye contact with audience members during the prologue, but no audience interaction is required.

### **Social expectations**

The audience can choose to sit in the seating bank, or on the bean bags or banana lounges by the front of the stage. There is a pacing space to the side of the seating bank by the door. Audience members are welcome to come and go in the space; the ushers will open the doors to the foyer for them. Audiences are welcome to stim in the space and bring stim toys. The music in the performance is designed to build energy, regulate and calm.

### **Performance expectations**

There is one performer, dressed in black, with long red curly hair, speaking and playing a cello. The words are spoken live, and also prerecorded. There is a storyline, but it isn't important to follow it, or listen to all of the words. The work is more of a poetic meditation.

### **Other**

## **Content Warnings**

The work deals with scary, overwhelming encounters with nature, and how to cope with them.

### **Mention of**

- Objects hitting a car
- Burnt skin
- Revisiting the site of an accident
- Flashbacks to an accident

### **Discussion of**

- Being struck by lightning, non fatal, in detail
- Fear of death and dying
- Pain
- Depersonalisation
- Intense emotional dysregulation

## **General Notes**

An Acknowledgement of Country will be played in the space before the show begins. The work is designed to give the audience a feeling of connecting with vibration throughout their body, a sense of levitating and returning back to the ground. It is designed to be felt as much as seen and heard. It is trying to communicate an overwhelming but ultimately beautiful connection with nature and vibration.



## The Venue



Image: North Melbourne Town Hall features giant red letters that say ARTS HOUSE out the front of it.



Image: a map of Arts House and its surrounding area. [LINK TO MAP](#)

## Front Entrance



## Accessible Entrances



There are two Accessible Entrances. The first is on Errol St next to the Post Office.



Image: Errol Street entrance next to the Post office with wheelchair accessible ramp or two steps with grab rails.



Image: View of door entrance.

The second Accessible Entrance is towards the end of George Johnson Lane.



Image: View of George Johnson Lane from Errol St. The laneway passes through an archway with a brick wall at the end.



Image: view of the ramp leading from George Johnson Lane to the automated door which opens into the Arts House foyer

## Box Office



The Box Office is located in the foyer under the stairwell.

## Ushers



Ushers will be wearing black with an Arts House Logo on the left hand shoulder.

## Bar



Bar staff will be wearing black with an Arts House Logo.

We have a range of alcoholic and non-alcoholic beverages for sale.

We are a cashless venue and accept EFTPOS, Visa and Mastercard payments.

## Quiet Space



Arts House Quiet Space is located on Ground Level and is nearby reception and opposite the accessible bathrooms. It includes a range of seating options including soft furnishings, dimmable lights, sensory and stim objects. It is open during venue opening hours and events as a quiet space, prayer or parenting space.



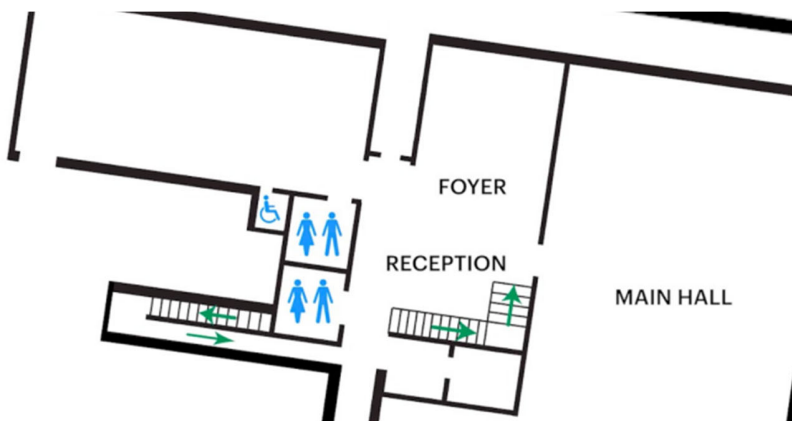
Image: Quiet space with lights dimmed



Image: Quiet space kitchenette and bookshelf

## Bathrooms

All bathrooms have Dyson hand dryers with sensor activation. There is an accessible bathroom that is single use on ground level opposite the Quiet Space. There is another accessible bathroom upstairs – this is accessible via lift or stairs.



## Door to Main Hall

The Performance is in the Main Hall.

It is on the ground floor.

It is to the left of the box office desk and right of the bar.

An artist statement is available on signage and warnings on the door.



## Lift

The lift is located behind the reception desk in the foyer.

The closest entry to the lift is via George Johnson Lane.



## **Transport**

### **Tram**

Route 57 (High Floor trams only)

Stop 12, North Melbourne Town Hall.

Please note, this is not a wheelchair accessible tram

[GETTING TO ARTS HOUSE VIDEO LINK](#)

### **Train**

Arts House is 1.1km from

North Melbourne Train Station,

approximately 16 minute walk

[North Melbourne Station Information](#)

1.2km from Flagstaff Station,

approximately 15 minute walk

[Flagstaff Station Information](#)

### **Bus**

Bus number: 216

### **Parking**

There is limited paid on-street parking on Queensberry Street and Errol Street.

There are two accessible on-street car parking spaces on Queensberry Street (150m to our accessible Errol Street entrance) for holders of a Parking Permit for Disabled people.

## **COVID Safety**

Please follow good health and hygiene practices when visiting Arts House.

Ticket holders who cannot attend their performance due to COVID-19 illness or symptoms are entitled to a full refund.



## **Facemasks**

We strongly recommend wearing a face mask while indoors. We have disposable masks available at reception and in the foyer.

## **Cleaning**

Arts House buildings are cleaned nightly Monday-Friday and on weekends as required. We conduct touchpoint cleaning of spaces between performances.

## **Hygiene Stations**

Arts House provides handwashing and hygiene stations in each amenities area, studio, and office including: hand sanitizer, disinfectant wipes, rubbish bin.

More information about COVID-19 Safety can be found through the links below:

[Our COVID-19 Safety Plan - Arts House - Melbourne](#)