

ENEMIES OF



EAT SHIT

- 32 *endition* Cr. V. (Guy.)
- 33 *curdo* L.f.erotica Seitz V. (Braz.)
- 34 *as* Fab. f. (Braz.)
- 35 *amensis* Cr. f. (Peru)
- 36 *lysiptis* f.berg. (Argen.)
- 37 *phacelus* J. (Peru)
- 38 *lysiptis* f.berg. (Argen.)
- 39 *ubina* Bates f. (Col)
- 40 *championi* Godm. & Salv. (Mex.)
- 41 *dominicus* Fab.f.ino Godm. & S. (Mex.)
- 42 *rhaecotis* Godm. & Salv. f. V. (Mex.)
- 43 *nantinaea* Feld.f.amazonica Bates
- 44
- 45
- 46
- 47
- 48
- 49
- 50
- 51
- 52
- 53
- 54
- 55
- 56
- 57
- 58
- 59
- 60
- 61
- 62
- 63
- 64
- 65
- 66
- 67
- 68
- 69
- 70
- 71
- 72
- 73
- 74
- 75
- 76
- 77
- 78
- 79
- 80
- 81
- 82
- 83
- 84
- 85
- 86
- 87
- 88
- 89
- 90
- 91
- 92
- 93
- 94
- 95
- 96
- 97
- 98
- 99
- 100

- 1
- 2
- 3
- 4
- 5
- 6
- 7
- 8
- 9
- 10
- 11
- 12
- 13
- 14
- 15
- 16
- 17
- 18
- 19
- 20
- 21
- 22
- 23
- 24
- 25
- 26
- 27
- 28
- 29
- 30
- 31
- 32
- 33
- 34
- 35
- 36
- 37
- 38
- 39
- 40
- 41
- 42
- 43
- 44
- 45
- 46
- 47
- 48
- 49
- 50
- 51
- 52
- 53
- 54
- 55
- 56
- 57
- 58
- 59
- 60
- 61
- 62
- 63
- 64
- 65
- 66
- 67
- 68
- 69
- 70
- 71
- 72
- 73
- 74
- 75
- 76
- 77
- 78
- 79
- 80
- 81
- 82
- 83
- 84
- 85
- 86
- 87
- 88
- 89
- 90
- 91
- 92
- 93
- 94
- 95
- 96
- 97
- 98
- 99
- 100

Li
Ner
Dic
5
V. (N.G.)
6
V. (N.G.)
7
(N.G.)
8
Dodona
9

1
2
3
4
5
6
7
8
9
10
11
12
13
14
15
16
17
18
19
20
21
22
23
24
25
26
27
28
29
30
31
32
33
34
35
36
37
38
39
40
41
42
43
44
45
46
47
48
49
50
51
52
53
54
55
56
57
58
59
60
61
62
63
64
65
66
67
68
69
70
71
72
73
74
75
76
77
78
79
80
81
82
83
84
85
86
87
88
89
90
91
92
93
94
95
96
97
98
99
100

This show was created and first performed on Gadigal Country.

The team pays our respects to Elders past and present, and to First Nations culture, knowledge and all spirit dance, danced and dancing as we share this story across Country.

This always was and always will be Aboriginal land.

Hello Lovers.

Thank you for coming to

ENEMIES OF GROOVINESS EAT SHIT!

A ritual theatre work entrenched in pleasure activism,

conducted by your local hysterical heretic and person of interest, Betty Grumble.

This is the show she performs instead of an assassination, where laughter is sharpened to a blade and the body, a feeling tonic.

Grumble continues her quest

for world-saving

and love-making via our ancestors of rock 'n' roll, protest and poetry.

Hope Energy meets Rage Energy

in this all-singing, all-howling cabaret: du Sex Clown.

Thank you, bodies!



Craig Slist



STRENGTH

WARNING Strictly 18+

- Contains : Strobe, Incense Burning,
- Discussion of Sexual Violence,
- Discussion of Intimate Partner Violence,
- Loud Music, Full Frontal Nudity,
- Discussion of Ecocide, Sex Scenes, Joyful Bare Body,
- Discussion of Death & Grief, Nakedness, Love Energy,
- Rage Energy, Hope Energy,
- Fuck Energy, and even more joyfully wetter bare body!

With special thanks to Declan Greene who believed in the show from the beginning Show Image by Acid Tongue

Original Grumble Logo by Timothy Gibson

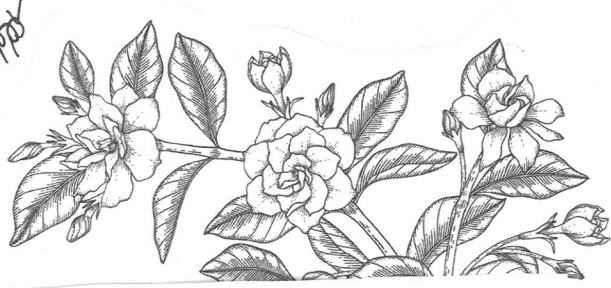
My hero...

Credits *66*

Creator Emma Maye Gibson *###*

Performer Betty Grumble *###*

ASSistant Megana Holiday *###*



Art Doulas & Dramaturgical Team

Costume Design Matthew Stegh & Haus of Helmutti

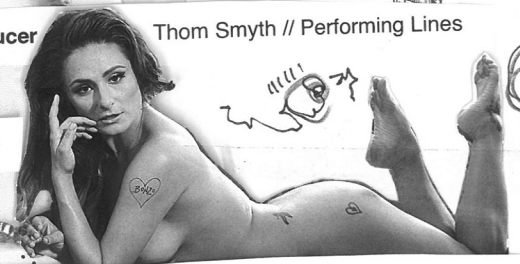
Victoria Spence, Dr Charlotte Farrell,
Dr Annie Sprinkle

Producer Thom Smyth // Performing Lines

Care Consultant Stella Delight

Sound Design Betty Grumble & stereogamous

Pussy Print Flag Saffaa



LX Design & Production Manager

Alex Torney

Documentation Liz Ham, Joseph Mayers & Kate Blackmore



ECOSEXUALS

Breathe





Who made the body
a rude and dirty thing?

Don't Cha?

dancing,



coagulate

giving yourself
permission to feel shit,

compassion,

breathe

seeking out external help,
screaming into

crashing waves,

going to

therapy,

HOPE ENERGY

writing down your feelings,

GRUMBLE

break it up

Honesty,

LOVE ENERGY

feeling

Confusion,

helpless

tension,

grief,

despair,

oxytocin

anger,

ANNIE SPRINKLE



allowing
yourself to feel,

DON'T CHAAAAAAAI?!

exercising,

listening,



Being like a tree



care,

hope,

'This show speaks to experiences that are further care and comfort post show, being with your energy. This is a page of they may be broken up by actions of hope, you to notice them and sit with them. Are things to compost and things we can use that will always be with us, and the You are fertile ground

Guides of Art, Love & Truth

Image from Annie Sprinkle's
Post Porn Modernist





Bidjigal

Tree energy

making art about it,

patting a dog,

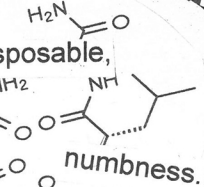
breathing slowly,
fully and deeply,

by the roots

seeking out internal help,

Lesbian Justice Gangs

Goddess Elizabeth Burton



agony,

mulch

FUCK ENERGY

You've made my SHITLIST <3

stuckness,
loneliness,

radical tenderness

pain, to you and

to others,

being still,

shit

talking to
your confidant,

get a
gun?
Nah....

RAGE ENERGY

are shared. If you feel you need
are some suggestions for
composting feelings and how
pe and tenderness. We invite
ound us and within us, there a
to break it up. There are things
at which we can release.

ground.

Touching yourself

, love,

Being in nature

Trusting

the moment to pass

CANDY ROYALLE

Pure love

Masturbation

Mastication

Meditation

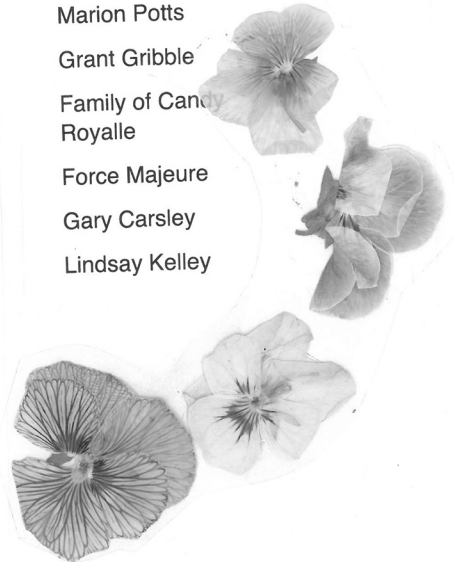
Mobility

THANK YOU

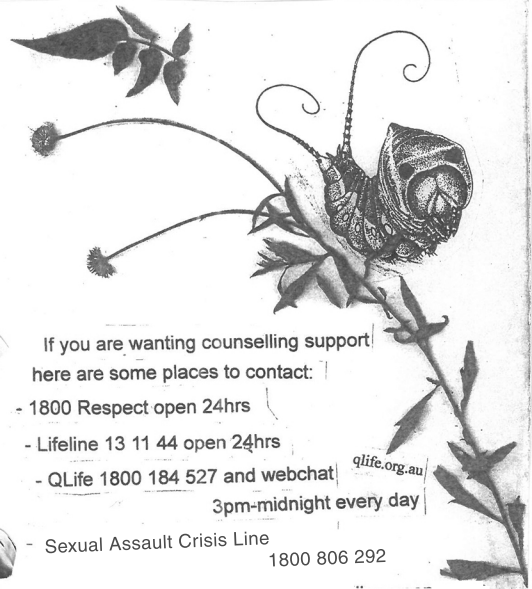
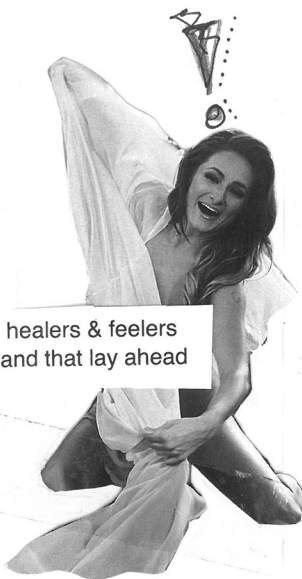
Thom Smyth
Team Performing Lines
Alex Torney
Megana Holiday
Victoria Spence
Declan Greene
Dr Annie Sprinkle
Dr Charlotte Farrell
Stella Delight
Glitta Supernova
Elizabeth Burton
Ash Bee
Critical Path
Griffin Theatre
The Red Rattler
Theatre
Joy Ng & The Bearded
Tit
Dandrogyny
Hip Hop Hoe
Aunty Lynda Gibson
Aunty Sue
SUK Workwear
O
Aunty Rhonda Dixon-
Grovenor
Libity Burton

Iya Ya Ya
Stelly G
Mum & Dad & Little
Brother
Alfie & Rumble
Sheena Barnes &
Sydney Vintage Dance
Ramona Adamovich
Liz Ham
Sophie Roberts
Justin Shoulder
Matt Stegh
Willow Darling
Haus of Helmutti
Mat Hornby
Saffaa
Paul Mac
jonny seymour
stereogamous
Leonard Mickelo

Nana Miss Koori
Matt Mewburn
Eveleigh Works
Matt Format
Mark Mitchell
Marion Potts
Grant Gribble
Family of Cand
Royalle
Force Majeure
Gary Carsley
Lindsay Kelley



All the warriors, carers, healers & feelers
that have come before and that lay ahead



If you are wanting counselling support
here are some places to contact:

- 1800 Respect open 24hrs
- Lifeline 13 11 44 open 24hrs
- QLife 1800 184 527 and webchat qlife.org.au
3pm-midnight every day
- Sexual Assault Crisis Line
1800 806 292
- MensLine 1300 78 99 78 or online open 24/7

LOVE

by Candy

This is poetry.

A stream of connected consciousness.
I stress that I try to create work that releases hurt in people because experienced alone,
pain makes us feeble.

This is a collective experience,
where we explore the human condition,
both dark and in all its brilliance.

We are more resilient than they would lead us to believe,
Self determination means we can achieve.

Conceive a world where empathy and compassion are engrained actions,
Tolerance a practiced passion.

A place where we know it's okay to be weak.

We are fallible,

It's part of what makes us unique.

Perfection's a fallacy.

Most financial wants pure fantasy.

Life's more rich for those not perpetuating agony.

I know that heaviness that comes from being empty.

Believe me, I've been broken plenty.

There are parts of my mind I still deny.

If I could tap into that, I'd be the greatest writer that's ever been;

If I could unblock this, I'd be the greatest woman that ever lived.

So lend me your ear, it's redundant now fear.

Lend me your hearts, they're about to be broken open.

The spoken tokens are far more than slogans,

chosen in moments where hope was fading,

but never faded.

This heart never learned to hate,
Instead I choose to create to stimulate debate.

Refuse to remain spiteful.

I'll make shade when it gets too hot,

by sharing poetry and song with you,

the important lot.

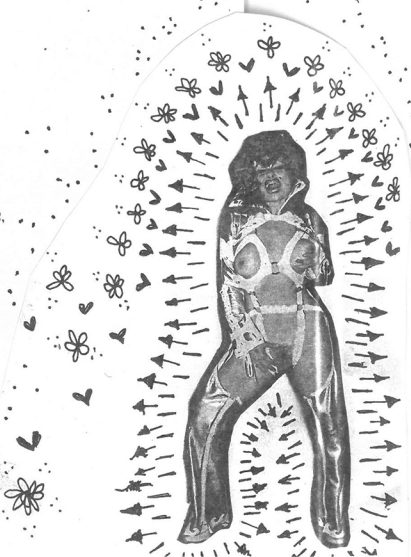
People have power, it's more true than not.

We don't have to be locked behind divisive lines.

If I was King of the world and all the world was mine,

I'd say above all there's only one law,

and that one law is LOVE.



ECOSEXUALS UNITE



Australian Government

**Creative
Australia**



**PERFORMING
LINES**