



Arts program for people with disability

The Warehouse Residency program

City of Melbourne Arts House



Easy English

Header image: *Imagined Touch* by Jodee Mundy Collaborations. Photo by Bryony Jackson.

Image description: An image of two female performers, both with brown hair, standing on a stage with a flame-red curtain backdrop. Each performer is next to an interpreter dressed head to toe in red. Each person has different facial expressions of joy, mischief and surprise and they are gesturing to one another in highly expressive ways.

Hard words



This book has some hard words.

The first time we write a hard word

- the word is in **blue**
- we write what the hard word means.

You can get help with this book



You can get someone to help you

- read this book
- know what this book is about

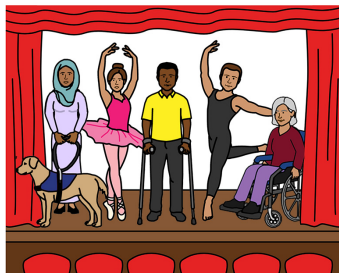


- find more information.



CITY OF MELBOURNE

**ARTS
HOUSE**



About this book

This book is from City of Melbourne Arts House.

This book is about

The Warehouse Residency.

The Warehouse Residency is a new program for people who are D/deaf or people with disability who work in the arts.

We will call it **the program**.



CITY OF MELBOURNE

**ARTS
HOUSE**



ARTS ACCESS VICTORIA

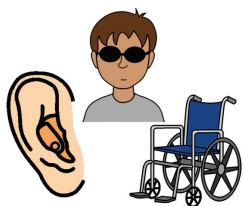
The program was made by

- Arts House
- Arts Access Victoria
- 6 artists with disability including D/deaf or **neurodivergent** people.

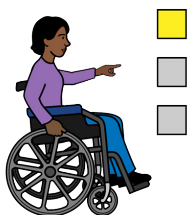


Neurodivergent means someone who thinks in a different way.

Why did we make the program?



We want people with different disabilities to have time and a place to make their art.



The program will support people to

- choose the art they want to make



- make new and different art



- work in a safe place.

Who can apply?



You can apply if you live in Victoria and

- have a disability or disabilities



- have an illness that will **not** go away



- are D/deaf or neurodivergent.

Important dates



Applications

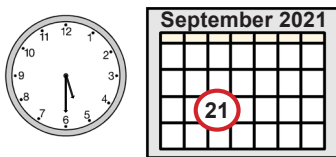
If you want to be part of the 2022 program you **must** send your application **before Thursday 14 October**.

You can contact us to ask questions or tell us if you need more time.

Contact information is at the end of this book.



Information meetings

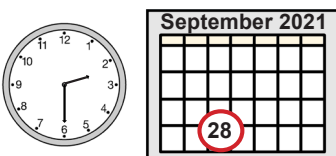


You can join the City of Melbourne Arts House Zoom meeting at **5.30 pm on Tuesday 21 September 2021.**



Visit the website to book

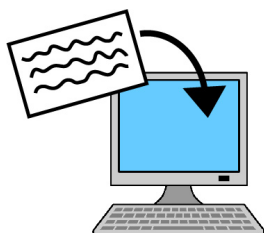
artshouse.com.au/events/arts-house-call-out-info-session-2022-23



You can join the Arts Access Victoria Zoom meeting at **2.30 pm on Tuesday 28 September 2021.**



You **must** tell us if you are coming to the Arts Access Victoria meeting by **2 pm Thursday 23 September 2021.**



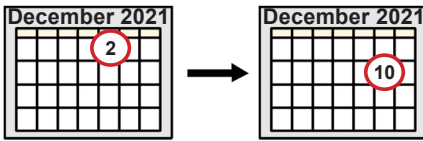
email rsvp@artsaccess.com.au to tell us your access needs and get the Zoom link.



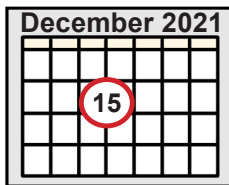
These sessions will be Auslan interpreted.



Chosen artists



We will talk to artists who might be part of the program from **Thursday 2 to Friday 10 December 2021.**

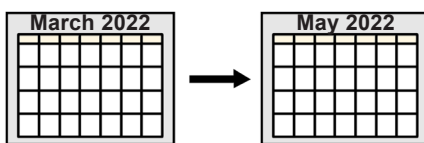


We will tell artists who will be part of the program from **Wednesday 15 December 2021.**

Residency



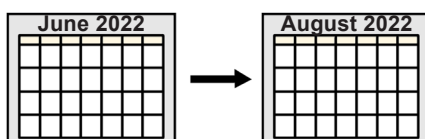
Residency means the time you will spend working on your art.



Artists can choose to work from

- **March to May 2022.**

or



- **June to August 2022.**

Presentation



Presentation means you will show your art at the Arts House.



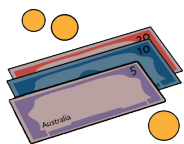
The first show will be from August 2022.



The second show will be from November 2022.

We will set dates that work for everyone.

What support will the chosen artists get?

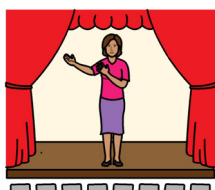


The chosen artists will get

- \$25,000 to pay for their time and materials plus \$4,000 for access costs



- a place at the North Melbourne Town Hall to work for 3 months



- a place at the North Melbourne Town Hall to show their art to the community for up to 1 month



- a **mentor**
 - a mentor helps artists make their best art



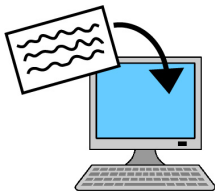
- a **producer**
 - a producer helps everyone to work together
- an **access consultant**
 - an access consultant gives ideas about how to make the art project accessible.

How to apply



You can apply online

artshouse.com.au/artist-opportunities/the-warehouse-residency



You can send different types of applications.

For example

- a written application



- a video



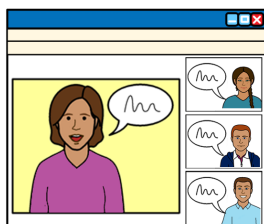
- an Auslan video



- a voice recording.



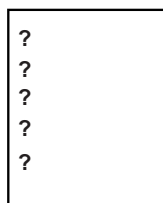
You can ask someone you know to help with your application.



You can contact us if you need to send your application a different way.

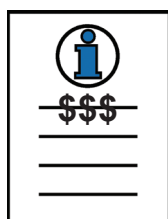
For example, you might want to do a recorded Zoom interview.

What do I need to have in my application?

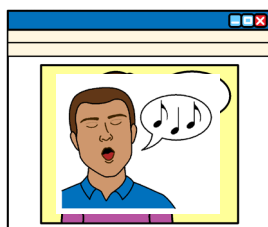


You need to

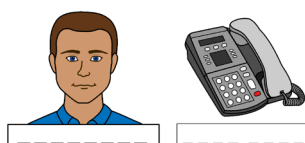
- answer 5 questions about your project



- give us information about your project costs



- show us some of your art



- tell us some of your personal information
 - for example, your name and phone number



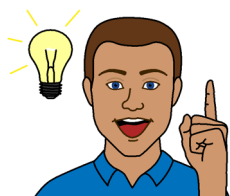
- tell us about your support needs.



If you have support needs we will contact you to talk about how we can meet your needs.

What are the 5 questions in the application?

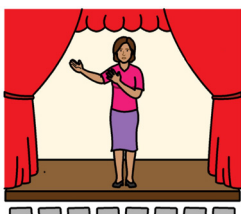
You need to answer 5 questions.



1. What is your art project idea and how will you make it?

You can make any type of art.

For example, a show, photos, music or painting.



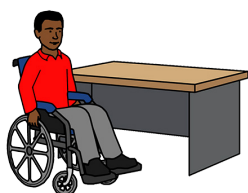
2. How will you show your art at the North Melbourne Town Hall?



3. Who will work on your team?



4. How will you make your art project accessible?

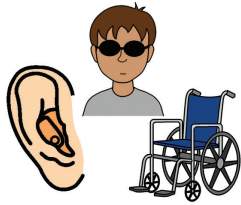


5. Do you need better access or other supports to make your art project?

How will we choose the artists?



We will choose 2 art projects each year over 5 years.



We will choose artists who want to make art that

- is led by people with disability or chronic illness, D/deaf or neurodivergent people



- is accessible to everyone



- is new or different



- will give them new skills.



The artists can be at any stage of their art career.

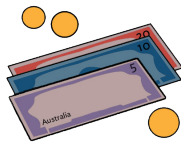


We will also choose artists who have a good plan about

- how the project will happen



- what materials they will need



- the project costs.



You can contact us or read all the information on our website to find out how the money can be spent.



The applications will be reviewed by

- 4 artists who made the program

- the Arts House creative team.

More information



For more information contact
City of Melbourne Arts House.



Call 03 9322 3720

Text 0447 570 178



Website

artshouse.com.au/artist-opportunities/the-warehouse-residency



Email Sarah Rowbottam

sarah.rowbottam@melbourne.vic.gov.au



If you need help to speak or listen use the
National Relay Service.

Call 1800 555 660



Website

communications.gov.au/accesshub/nrs

Give the relay officer the phone number you
want to call.

This Easy English document was created by Scope (Aust) Ltd. in September, 2021 using Picture Communication Symbols (PCS). PCS is a trademark of Tobii Dynavox, LLC. All rights reserved. Used with permission. This document must not be sold to third parties. The images must not be reused without permission. For more information about the images, contact Scope on 1300 472 673 or visit scopeaust.org.au