

Arts House Season Two 2017

A

H

S

2



Arts House acknowledges the traditional land upon which we are located, of the Wurundjeri and Boon Wurrung people of the Kulin nation; and we pay our respects to Elders both past and present, and, through them, to all Aboriginal and Torres Strait Islander people.

A message from the Lord Mayor

Through a diverse program of events, installations, performances and conversations, Arts House remains Melbourne's home of all things experimental and contemporary.

In Season 2, 2017 featured artists will take risks and encourage us to think deeper about the world, as contemporary art should.

Among this diverse season, Arts House will join with the community and emergency services partners to present the second instalment of *Refuge*: a five-year investigation into the role of artists and cultural institutions in preparing for, and building resilience to, climatic change.

As part of *Refuge*, emergency management professionals, artists, local and international communities, rehearses and prepares Arts House as a relief centre.

Season 2 is brave and bold and a fine example of the importance of art, connection and experience.

I encourage you to delve into what will be a challenging and important season of works.

Robert Doyle
Lord Mayor

| | | | | | |
|----|--|----|---|----|--|
| 6 | Introduction Season 2 | 21 | Art & Action: Displacing Whiteness in the Arts with Tania Cañas, Sethembile Msezane and Eugenia Flynn | 34 | Survival Skills for Desperate Times Arts House & Melbourne Festival |
| 8 | We All Know What's Happening Samara Hersch & Lara Thoms | 22 | The Listening Program Open Studio Jacqui Shelton | 36 | North Melbourne Spring Fling Arts House |
| 10 | TRIBUNAL PYT I Fairfield | 23 | The Community Reading Room Torika Bolatagici | 38 | Refuge |
| 12 | The Long Lunch Jamie Lewis | 24 | Pile of Bones Stephanie Lake Company | 44 | in extremis |
| 13 | Supper Club: Place & Displacement | 26 | Nightdance Melanie Lane | 46 | ROOMAN Fleur Elise Noble |
| 14 | Tales of an Afronaut wāni | 28 | Assembly Operation Speak Percussion | 48 | WE ARE LIGHTNING! JOF & Sam Halmarack |
| 16 | Respectable Thief Nástio Mosquito | 30 | Melbourne Fringe at Arts House | 50 | Up, Art & Away! TextaQueen |
| 18 | Excerpts from the Past Sethembile Msezane | 32 | The Children's Party Ben Landau & Alex Walker | 54 | Arts House Develops |
| 20 | Sonic Hieroglyphs Stéphanie Kabanyana Kanyandekwe | | | 56 | Project Supporters |
| | | | | 58 | Venue |
| | | | | 59 | Accessibility |
| | | | | 60 | Bookings |
| | | | | 62 | Season 2 Calender |



Image: ROOMAN, Fleur Elise Noble

No More Fake News!

The arts sector has been ticked off by some observers for overuse of superlatives in describing the work they do. It seems a fair call, particularly in these times, so here's the plain speaking version of what's ahead in Season 2.

We begin with a clutch of works that explore the always complex, sometimes divisive concept of place and displacement head on. Then two of Melbourne's established choreographers, Stephanie Lake and Melanie Lane, followed by Speak Percussion, each present premieres of new works that aurally and physically reveal both their narratives and their politics.

Our collaboration with Melbourne Fringe on *The Children's Party* aims to critically empower young people, while *Survival Skills for Desperate Times*, our collaboration with Melbourne Festival, is more fun than it sounds and showcases the living (and dying) skills of 18 artists.

In November we will seek *Refuge*, when we transform the North Melbourne Town Hall into a designated emergency relief centre. Our ongoing investigation into the role of artists and cultural institutions in times of climate change will involve a series of installations and investigations and culminates with a 24-hour sleepover rehearsing the impacts of extreme heat.

Not that we're glum - there's just a lot at stake!

In November we can dream a little with multi-disciplinary artist Fleur Elise Noble, before ending the year in song with Sam Halmarack and JOF. TextaQueen takes over the Arts House windows in December with bold superhero scenarios.

Risk taking and failure are a critical part of the creative process, and Arts House continues to offer a platform to allow this to happen through our CultureLAB and Artist-in-Residence programs, while The Listening Program and our podcast series offers insights from the artists in conversation with each other on why they make the work they do.

In Season 2 we invite you to come and visit during North Melbourne Spring Fling to meet Artist-in-Residence, Jen Rae, who will entice you into conversation with the offer of a locally brewed cuppa.

Works that explore urgent social issues and experiment with form can take us to unfamiliar places, but combined with each other and the energy of our audiences, they also offer new, inspiring worlds of thinking, feeling and acting.

There it is. Season 2. Come if you can.

(Beside ourselves with excitement – but playing it down.)

Angharad Wynne-Jones
Artistic Director

We All Know What's Happening Samara Hersch & Lara Thoms



Original Concept:

Samara Hersch

Co-Created by:

Samara Hersch &
Lara Thoms

Performed & Created by:

Venu Alisaia, Lazar Arnott,
Tove Due, Allegra Martin,
Eve Nixon, Bridie Noonan &
Finn Owen

Sound Design &

Composition:

Marco Cher-Gibard

Lighting Design:

Jen Hector

Design:

Romanie Harper with
Lara Thoms

Project Coordinator &

Youth Support:

Prue Clark

Pianist/Collaborator:

Grace Ferguson

World Premiere

**6.15pm, Wed 19 –
Fri 21 Jul
5pm, Sat 22 Jul with
Post-Show Q&A**

Access:

**Auslan Interpreted –
Sat 22 Jul + Q&A
75 mins
\$35/\$30/\$25**

Warning:

Children of all ages are
welcome to attend this show,
however it does contain
some adult concepts

Welcome to a tropical island full of palm trees, phosphate mines, coconut water and kids. Set against a backdrop of handmade costumes and colonialism, this is an absurd, true story about Leonardo da Vinci, the Pacific, seagull shit and state-sanctioned abuse.

This new work sees Samara Hersch (*Sex and Death, META*) and Lara Thoms (*A Singular*

Phenomenon, Howl) collaborate with seven young people in Melbourne in response to Australia's ongoing relationship with Nauru.

Part school musical, part history lesson and part political probe, *We All Know What's Happening* sees people too young to vote, confront power, complacency, children's rights and the future.

Image: Bryony Jackson

TRIBUNAL PYT | Fairfield

Concept & Lead Artist:
Karen Therese
**Concept & Human Rights
Lawyer:**
Joe Tan
**Creative Collaborators/
Text/Performers:**
Rhonda Grovenor Dixon,
Mahdi Mohammadi, Karen
Therese, Paul Dwyer, Katie
Green, Jawad Yaqoubi
plus guest speakers
Text Editor:
Paul Dwyer

Outside Eye:
Chris Ryan
Design:
Province Studio (Laura Pike
and Anne Louise Dadek)
Video Design:
Sean Bacon
Sound Design:
James Brown
Lighting Design:
Emma Lockhart-Wilson
Stage Manager:
Patrick Howard

8.15pm, Thu 20 – Sun 23 Jul
3pm, Sat 22 Jul
5pm, Sun 23 Jul

Access:
Auslan Interpreted –
8:15pm, Fri 21 Jul
70 mins
\$35/\$30/\$25

Warning:
Smoke effects, adult
concepts of violence and
trauma

TRIBUNAL is a ceremony we are all invited to.

Australia's history of colonisation and detention will be put on trial when Indigenous elders, artists, human rights activists, refugees, lawyers, young leaders and outlaws come together to create an Australian Truth and Reconciliation Tribunal. This compelling collaborative work addresses Australia's history

by telling the parallel stories of Indigenous Australia and newly arrived refugees.

A truth-telling, a sharing of stories, a celebration of resilience, a way forward – PYT | Fairfield's profoundly moving and fiercely ambitious verbatim theatre project fuses participatory performance with legal procedure, personal history and intimate conversations to create a parallel democracy for our times.

Image: Alex Wisser

The Long Lunch Jamie Lewis



Lead Artist:
Jamie Lewis

**1pm, 2pm & 3pm,
Sun 23 Jul
\$10**

This is a durational event.
Please book for one of the
sittings, but note, you are
welcome to come and go as
you please

The Long Lunch is a conversation series between independent artists. Over a shared meal, participants meditate on their place within old and new spaces, in response to the themes of place and displacement.

The Long Lunch is a durational event. You are invited to consider your place in the discussions, and to vacate when you are ready, so that someone else's voice can also be heard.

Image: Sarah Walker

Supper Club: Place & Displacement Facilitated by Asha Bee Abraham & Dan Koop



**7pm, Tue 25 Jul
120 mins
\$25/\$20**

Supper Club: Place & Displacement is a facilitated exploration of our overlapping relationships to place.

Wurundjeri elder Joy Murphy Wandin, urban planner Timmah Ball and natural history expert Gary Presland each frame their view of place through Indigenous culture, our natural environment and the ways that we design new spaces and transform place. Supper Clubbers can then grab a plate and join in hosted

discussions examining wider concepts of place and displacement – ranging from homelessness, migration and ageing to space travel and the internet – designed to draw upon the expertise and experiences of all present.

Facilitated by human ecologist and artist Asha Bee Abraham (*Invisible Cities*) and purveyor of participatory art forms Dan Koop (*The Stream/The Boat/The Shore/The Bridge*), entry includes a delicious meal by Tamil Feasts.

Image: Laura Willis, *Public Survey* (2010)

Tales of an Afronaut wāni



Created & Performed by:
wāni Le Frère

World Premiere

7pm, Wed 26 – Fri 28 Jul
40 mins
\$15 /\$10

Image: Ruth Ruach

Melbourne-based poet wāni Le Frère transports audiences through the world of a third-culture generation, delivering a raw performance of vulnerability, resilience and honesty in an evening of spoken-word poetry.

An ode to the flourishing of life and the telling of the untold, *Tales of an Afronaut* pays tribute to the incredible lineage of storytelling embedded deep within the black/African diaspora. Through a lens both retrospective and current, *Tales of an Afronaut* is an evening like nothing else.



Image: *Respectable Thief*, Project Series 104: Nástio Mosquito (2016) © MoMA, NY

Respectable Thief

Nástio Mosquito

Written by:
Nástio Mosquito
Developed by:
Nástio Mosquito & Vic Pereiró
Project Coordination by:
Godelieve Mosquito for
ZZZZ Creative Projects

Music by:
Nástio Mosquito & DZZZZ
Band, Re-Thieved by Seiji
Video by:
Vic Pereiró
Commissioned by:
The Museum of Modern Art
in conjunction with Projects
104: Nástio Mosquito,
Respectable Thief

Co-Produced by:
KW Institute for
Contemporary Art with
Berliner Festspiele / Foreign
Affairs, as part of Corpus,
a network for performance
practice; and Vooruit Art
Center

Australian Premiere
8pm, Thu 27 – Sat 29 Jul
45 mins
\$35/\$30/\$25
Warning:
Explicit language

*We are remixers. We are thieves.
And then there's natural selection.
We pick up where the last human has left it.
We are in the business of making it our own.
We are respectable thieves.*

In a near-trancelike barrage of music, text, physicality and imagery, artist Nástio Mosquito charismatically unpacks the good and the bad of what we 'take' as we create identities, maintain relationships and gain power.

From Wall Street hubris to downloading songs, from guilt to entitlement, *Respectable Thief* delivers an urgent and seductive demand: that we decide what's important, what to follow, what to focus on and what to complete.

Respectable Thief straddles the epic, the intimate, the banal and the visceral – provoking, coaxing and celebrating the power of questioning and the productive eloquence of anger.

Excerpts from the Past Sethembile Msezane

Sound Compilation:
Gerald Machona

5pm, Sat 29 Jul
2pm, Sun 30 Jul
Each performance includes
an artist Q&A
60 mins
\$20/\$15

Excerpts from the past are reincarnated in this striking visual and performance-based installation, which considers current conversations of land in relation to the colonial quest of Africa. Intimate and unsettling, Sethembile Msezane's embodiment of Nolwazi, a time traveller, hypnotically moves amongst the antique furniture and decaying structures of a domestic colonial landscape, invoking ancestral memory and unearthing associations of belonging, dislocation and displacement.

Based in Cape Town, South Africa, Msezane is a self-described KwaZulu-Natal, '90s-born

millennial, whose work interrogates issues of identity shaped by her background in the 'New South Africa'. She uses a racial, cultural and gendered lens to subvert colonialist ideologies and injustices wrought through selective history, and to address the absence of the black female body in the public and private domains.

Disruptive and subversive, *Excerpts from the Past* is remembrance as resistance, and Msezane's powerfully eloquent love letter to those who have been dispossessed of their history.

Image: Lerato Maduna & Thandive Msebenzi



Sonic Hieroglyphs

Stéphanie Kabanyana Kanyandekwe



Presented by:
Stéphanie Kabanyana
Kanyandekwe

World Premiere

**1pm–7pm, Sat 29 &
Sun 30 Jul**

This is a durational event –
you can come and go as
you please
FREE

The construction and archiving of culture is often analysed and documented through words, yet 93% of communication is not verbal. Join Stéphanie Kabanyana Kanyandekwe in her re-constructed lounge room as she live-transcribes visitors' conversations into Western music scores and Rwandan hieroglyphs.

Kabanyana Kanyandekwe will question, listen, transcribe into and perform from the scores on the walls of her re-constructed lounge room.

She invites you to become part of the work as she poses the questions: 'Ancestry?' on Saturday and 'Legacy?' on Sunday.

Sonic Hieroglyphs continues a conversation in the archive Kabanyana Kanyandekwe began in 2007. This work exposes her construction and archival of identity as a 'third-culture kid' through graphic scores, narrative ceremony, and cultural contextualisation via cross-generational conversations.

Image: Stéphanie Kabanyana Kanyandekwe

Art & Action: Displacing Whiteness in the Arts



Hosted by:
Tania Cañas with Sethembile
Msezane, Eugenia Flynn &
Odette Kelada

3.30pm, Sun 30 Jul
90 mins
\$10

How can art, actions and interventions create sites of resistance within colonial and institutionalised arts settings?

The panel explores the intersecting roles of race, gender and class in the lives of First Nations Women and Women of Colour navigating the arts sector.

In particular, discussion will focus on how First Nations Women and Women of Colour can use their arts practice to challenge the whiteness of institutions, and strengthen these knowledges to find better ways to work together.

Image: Sethembile Msezane

The Listening Program Open Studio Jacqui Shelton



Open studio:
2pm, Sat 29 Jul
60 mins
FREE

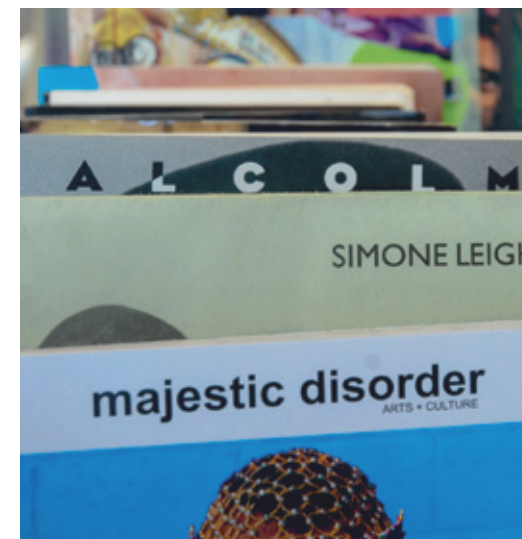
The Listening Program is a curated program that houses a growing archive of sound and audio works made by Arts House artists past and present, along with podcasts from across our public program, including Q&As and Supper Clubs. *The Listening Program* is also home to an Artist-in-Residence program that supports emerging and established artists working across the fields of sound art, composition, electronic music, sound innovation and audio-driven works.

In Season 2, 2017, *The Listening Program* Artist-in-Residence Jacqui Shelton will develop an interactive walking tour of the local neighbourhood of North Melbourne. The tour will take you through histories of North Melbourne and include stories from local community members.

Join us for an open studio at *The Listening Program* – leave the outside world behind, pop on some headphones and immerse yourself in some memorable pleasures for the ear.

Image: Zan Wimberley

The Community Reading Room Torika Bolatagici



Created & Devised by:
Torika Bolatagici

The Community Reading Room
11am–7pm, Wed 19 – Fri 21,
Wed 26 – Fri 28 Jul
1pm–7pm, Sat 22, Sun 23,
Sat 29 & Sun 30 Jul
FREE

DISPLACE AND DISPLANT
with Still Nomads
5pm–7pm, Sun 30 Jul
FREE

A pop-up destination for researchers, artists and book lovers, *The Community Reading Room* (CRR) holds space for individuals who identify as First Nations and People of Colour to encounter texts that acknowledge and place their lived experience and practice at the centre, rather than the margin.

Fijian-Australian artist and academic Torika Bolatagici has critically curated and lovingly gathered an extensive repository of texts spanning contemporary art and theory from Oceania, Africa and the Americas – postcolonial art, literature and philosophy on migration, citizenship and cultural identity.

Image: Alex Davies

Part intervention, part education and part inspiration, *CRR* is a discursive project that invites us to consider the inclusivity of public spaces and to contemplate how our knowledge institutions privilege particular ways of knowing and being. Drop in, peruse the selection of texts, and join us for *DISPLACE AND DISPLANT*, a closing event hosted by Still Nomads and *CRR* that sees black artists – First Nations, Afro-diasporic and Pasifika – share words, visuals, sounds and space.

Presented by Arts House

Pile of Bones

Stephanie Lake Company

Choreographer/Director:
Stephanie Lake
Dancers & Collaborators:
Marlo Benjamin, Samantha
Hines, Harrison Ritchie-
Jones & Jack Ziesing

Composer:
Robin Fox
Costume Designer:
Harriet Oxley
Production Manager:
Glenn Dulihamy
Producer:
Freya Waterson

World Premiere
7.30pm, Tue 15 –
Sat 19 Aug
2pm, Sat 19 Aug
60 mins
\$35/\$30/\$25

In this new work Lake's trademark gutsy physicality and kooky poetics are combined with four remarkable dancers, design team Harriet Oxley and Matthew Adey and an original composition by renowned artist Robin Fox.

Pile of Bones examines love, suppression, mutation and the uprising of inner demons and angels. Bodies are encrusted with fluttering armour and caught in sticky webs.





Image: Jody Hutchinson

Nightdance

Melanie Lane

Choreographer/Director:
Melanie Lane

Co-Creation/Performance:
Lilian Steiner, Gregory
Lorenzutti, Melanie Lane

Guest Artists/Coaches:
Benjamin Hancock, Holly
Durant, Sidney Saayman,
Lauren Runge

**Sound Design &
Composition:**
Chris Clark
Light Design:
Ben 'Bosco' Shaw
Producer:
Freya Waterson

World Premiere

**7.30pm, Thu 24 –
Sat 26 Aug
2pm, Sat 26 Aug
3pm, Sun 27 Aug
60 mins
\$35/\$30/\$25**

Australia and Berlin-based choreographer and performer Melanie Lane coaxes us off the couch and into the club in *Nightdance*, a pulsating new work that investigates the physical experience of the nightclub, and its seductive promise of transformation, primal temptation and sublime release.

Deftly transgressing the realms of traditional dance forms, Lane and her co-performers slide between exotic dance, techno, burlesque and pop as they navigate sound, space and light, and the social, sensual and cerebral offerings-up

for consumption after dark. As performers oscillate between entertainer and punter, lap dance and lip-sync, Lane shines a spotlight on the economy of entertainment, the labour and currency of the body, and our complicity as audiences, voyeurs and consumers.

Nightclub of the future or a dive into the sultry underworld of Berlin's Weimer-era cabaret – *Nightdance* pumps up the volume, dims the lights and asks what it takes for you to dance the night away.

Assembly Operation Speak Percussion



Composer/Director:
Eugene Ughetti
Designer/Dramaturge:
Clare Britton
Video Artist:
Cyrus Tang
Sound Designer:
Nick Roux

**Lighting Designer/
Production Manager:**
Richard Dinnen (Megafun)
Ceramicist/Visual Artist:
Jia Jia Chen
Performers:
Kaylie Melville, Matthias
Schack-Arnott, Eugene
Ughetti
Producer:
Michaela Coventry

World Premiere
7.30pm, Tue 5 – Sat 9 Sep
45 mins
\$35/\$30/\$25

Image: Damian Stephens @ DOT

Three percussionists dutifully form an assembly line to extract music from everyday objects.

Drawing on the visual, sonic and conceptual qualities of the one Yuan note, using paper, packaging, electronic toys and traditional objects, Speak Percussion delivers a loaded sonic odyssey.

In this major new collaboration between Eugene Ughetti, performance maker Clare Britton and visual artists Cyrus Tang and Jia Jia Chen, dark video sequences and minimalistic set design conjure surreal reflections on mass-production.

Assembly Operation manufactures high quality sound by crunching and grinding low worth goods.

Melbourne Fringe at Arts House



**Melbourne Fringe runs
Thu 14 Sep to Sun 1 Oct**

See melbournefringe.com.au
for more details.

Fringe Club is free.
Events by independent
artists are ticketed.
Full program drops
Thu 10 Aug

Image: Theresa Harrison

What do mirror balls, live art and radical performance work have in common? The fact that you're guaranteed to get hit with one of them at the Fringe Hub at Arts House during the 2017 Melbourne Fringe festival. This year your Fringe home-away-from-home is upping the ante, with over two weeks of non-stop independent art set to push boundaries and buttons; the Festival Club featuring free Fringe-made events of every size, shape and flavour; plus two bars open six nights a week.

Oh, and then there's dancing. Did we mention dancing? The Fringe Hub at Arts House is the perfect place to begin, continue or end your night. Come hear a tall tale spun, make the floors sticky and raise the roof in glorious celebration of everything (and everyone) Fringe-y.

The Children's Party

Ben Landau & Alex Walker

Lead Artists:
Ben Landau & Alex Walker
Members of The
Children's Party:
House of Muchness

World Premiere

4pm, Sun 24 Sep
Access: Auslan interpreted
70 mins
FREE but ticketed

Bookings at
melbournefringe.com.au
from Thu 10 Aug

Playground politics just got serious.

The Children's Party is hitting the campaign trail during the 2017 Melbourne Fringe Festival, as Australia's first child-led political party. Everything from policy ideas and key messages through to banners and slogans will be dreamed-up and double-spoken by a team of young people aged 8 to 12. Supported by a set of advisers, speech writers and industry experts, these pint-sized politicians are bringing

their message to the people at the inaugural Children's Party Convention. Part participatory art project, part social provocation, part the juiciest episode of Q&A you have ever seen – *The Children's Party* flips the adult-child hierarchy on its head.

Vote above the line, below the line or outside the lines – but whatever you do, buckle up, because The Children's Party aren't fooling around.

Image: Sarah Walker



Image: Aaron Walker

Survival Skills for Desperate Times

11am, 2pm, 5pm,
Sat 7 – Sun 8 Oct
120 mins

Full list of 18 artists
released on Tue 25 Jul.
Tickets on sale from Wed 26
Jul via artshouse.com.au

Curated by Arts House
Artistic Director Angharad
Wynne-Jones and Melbourne
Festival Artistic Associate
Gideon Obarzanek

Right now there's a lot to be desperate about... climate change, unhinged political leaders, getting old, working too much, not working enough, extremists of all stripes, the list goes on.

What skills and training do we need to survive in this world, and who can teach us?

Artists are the ultimate survivalists, continuing through the leanest of times and thriving in the extremes of great opportunity or disaster.

Over two days Arts House will transform into an urban survival camp, where 18 artists and creative camp-leaders will share their passion and expert skills in a unique performance-lecture series.

From the practical to the emotional, from the physical to the conceptual, you'll come away

with new information and strategies on how to thrive and survive – or at least have a laugh and make some new friends – in these trying times.

Performance-lectures include:

How to...

"... keep it funny" with Zoe Coombs Marr

"... care for your dead" with celebrant Victoria Spence

"... (D)construct identity with Drag and (D) androgyny" with Daniel Newell

"... call them out" (dealing with white supremacists) with Nayuka Gorrie

"... run fast" with David Woods

"... make a length of rope" with Vicki Couzens

"... embrace a creative slump" with Madeleine Dore

"...crunch" (from nature strip to plate... bugs and weeds) with Jen Rae

North Melbourne Spring Fling Arts House



10am – 3pm,
Sun 15 Oct
FREE

North Melbourne's annual Spring Fling celebrates its 40th anniversary.

Come along to Arts House and join local artists in an exchange, exploring how food is shaped through myth, secrets, migration and luck.

Image: Sarah Walker

Refuge

Join us and take *Refuge* as we transform Arts House – a City of Melbourne designated Emergency Relief Centre – into a place of safety.

Refuge explores the role of artists and cultural institutions in times of climate catastrophe. Each year until 2020, we're bringing together emergency management, artists, the community and local, regional and international partners, to prepare Arts House as a Relief Centre for 24 hours, in an imagined climate disaster.

In 2016, we imagined a local flood and transformed the North Melbourne Town Hall into a Relief Centre for 24 hours. This year

we envisage the increasing possibility of five consecutive days over 40°C.

The CSIRO and Bureau of Meteorology predict that by 2070 the number of days over 35 degrees in Melbourne will more than double from an average of eight a year, to 17.

How can we build resilience, connect and respond in inclusive, ethical and humane ways?

In times like these what's our most precious resource? The kindness of strangers? Each other? A plan? What skills do we have? Come and help us make a *Refuge*, collaborating alongside artists and emergency services.



Refuge Emergency Relief Centre & 24-Hour Exercise



Refuge Emergency Relief Centre
12pm–10pm, Sat 11 Nov
FREE. No bookings required. All ages.

Access:

This event is accessible via Auslan and an Audio Description Tour. Check the website or contact Arts House for more details.

Refuge 24-Hour Exercise
12pm, Sat 11 Nov – 12pm, Sun 12 Nov
FREE. Bookings required
This event is for people aged 18 years and older

Access:

Please contact Arts House regarding specific access needs

At the heart of *Refuge* is our *Emergency Relief Centre*, where artists, emergency services and you – our community – come together to start conversations, dream up ideas and forge possible futures.

On Saturday 11 November, spend the afternoon or evening at the *Emergency Relief Centre*. Take part in artistic interventions, meet with organisations including Red Cross Australia, the Victorian State Emergency Service (VICSES) and others, and join in conversation sessions, performances and collaborations.

Check the Arts House website ahead of time for updates and specific details.

To fully experience *Refuge*'s immersive emergency scenario, you can also sign up for the *Refuge 24-Hour Exercise*, from midday Saturday 11 November until midday the following day. The *Refuge 24-Hour Exercise* includes a sleepover at Arts House – but this is no slumber party! You'll need to be ready to help run the relief centre alongside volunteers, artists and others. It's an exercise in preparation, mutual aid and creative response!

Image: Bryony Jackson

Refuge Artists

Each of our *Refuge* artists explores a particular element within the Emergency Relief Centre – sleep, communications, light and warmth, food, wellbeing or community. Here's some of what you'll experience throughout the day and night...

Asha Bee Abraham *Contact*

Reaching out to loved ones or the vulnerable, staying connected, or building morale in an emergency – *Contact* draws on artistic and activist tactics to expand the ways we communicate in crisis situations.

Lorna Hannan *Crow's Corner*

Come and chat about challenges we face and how to make change! Named for North Melbourne activist, humanitarian and environmentalist Ruth Crow AM (1916–99), *Crow's Corner* is conversation-as-action, over a cup of specially blended Ruth Crow tea.

Emily Johnson & Vicki Couzens *Redreaming*

Redreaming our being through healing, rest and sleep – this is an encouragement to redream ourselves into a future, and from catastrophe into health. Join the overnight component of *Refuge* with artists Vicki Couzens and Emily Johnson to come together in a space where the anthropocentric experience of climate change is decentred; and where animals, plants, multiplicities of knowledge are heard, shared and viscerally experienced.

Dave Jones *Swelter*

In a tactile exploration of an extreme-heat scenario, a team of young collaborators construct a room-sized model apartment block and subject it to a halogen heatwave. As the space heats up, how will residents respond?

Jen Rae *Future Proof by Fair Share Fare*

Building on survival skills of food foraging, harvesting, preparing and preserving, *Future Proof* includes DIY workshops, demonstrations and exercises to boost collective know-how for crisis scenarios. The proof is in the pudding!

Latai Taumoepeau *HG57 (Human Generator 57)*

In the Tongan language, *maāma* means light and *māfana* means warmth. These concepts are the basis for *HG57*, a participatory performance that generates expanded ideas of inner warmth, drawing from ordinary daily fitness rituals.

These projects will sit alongside a range of workshops, information sessions and emergency preparedness activities run by Red Cross Australia, Victorian State Emergency Service (VICSES) and other emergency services and community partners. Drop in on Saturday 11 November to take part.

Refuge Events

Be part of the lead-up to *Refuge*, with these special events.

7pm, Wed 8 Nov
90 mins
\$25/\$15

Refuge Supper Club

Join Jen Rae of Fair Share Fare as she prepares ration-sized proportions for a special Supper Club conversation about disaster, adaptation, resilience and risk, along with *Refuge* artists and other special guests. Be prepared to beg, borrow or barter ingredients from your fellow Supper Club guests to complete your meal. You'll need to work together to make sure everyone has a full tummy!

6pm - 8pm
Thur 9 - Fri 10 Nov
FREE. Bookings required.

Refuge Open Studios

Before the *Refuge Emergency Relief Centre* opens and our *24-Hour Exercise* begins, come and visit the artists making and talking about their work at Arts House. Check the Arts House website ahead of time for more details.



Images: Bryony Jackson



in extremis

Climatic extremes are the new meteorological normal for our planet. This screen-and-audio-based exhibition offers human, interspecies, plant and geological perspectives, and visceral experiences of the fragility, resilience and collapse of systems and ecologies. *in extremis* is lightning storms, dry winds, urban heat-haze and contorted railway lines; parched riverbeds and flooded cities; panting, sweating, fainting and hallucinating.

Participating artists include Leah Barclay, Madeleine Flynn and Tim Humphrey, wāni, Jill Orr, Zoe Scoglio, Latai Taumoepeau and others.

Join *in extremis* interlocutor Sarah Miller and presenting artists for a night of presentations, experiences and performance at the exhibition opening on Tuesday 31 October.



10am–6pm,
Wed 1 – Sat 11 Nov
FREE

Exhibition Opening:
6pm–9pm, Tue 31 Oct
FREE. Bookings required.

The High Ground

Madeleine Flynn & Tim Humphrey

A new installation in the North Melbourne Town Hall Clock Tower to accompany *in extremis*, *The High Ground* is a test of human empathy in confined spaces. Participants undertake a negotiation within a delicate and precarious situation. Only one person can make it to the top.

In collaboration with Jen Hector (Australia), Live Umbrella (Finland), and Sophie Weeks and John Ash (UK).

Image: Christina Simons

Untitled

wāni

Coloniality's imposition of westernised systemic structures through globalisation has literally brought our climate to its current condition, where the most vulnerable and marginalised are often the most devastated by climate change.

Melbourne-based artist wāni explores displacement, erasure, anti-blackness and stories of dispossession that decentre whiteness in a new audio/visual work-in-development, presented as a special open studio to accompany *in extremis*. wāni is Artist-in-Residence for Arts House's *The Listening Program*, as part of *Refuge*.



Presented by Arts House

ROOMAN

Fleur Elise Noble

Creator & Director:

Fleur Elise Noble

Projected Characters:

Fleur Elise Noble,
Zaachariaha Fielding &
Sarah Reid

Designer, Projection Artist &

Puppet Maker:

Fleur Elise Noble

Sound Design:

Missi Mel Pesa

Production Operator &

Stage Manager:

Niccolo Gallio

Contributing Performers:

Fleur Elise Noble &
Daniel Fels

**Contributing Composers
& Musicians:**

Zaachariaha Fielding, Sarah
Reid, Tim Bennett, Peter
Knight, Mal Webb, Missi Mel
Pesa (AKA Melbient) & Opiuo
Time-Lapse Photography :
Simon Carroll

Drawer & Animators:

Fleur Elise Noble, Tim Bennet
& Isobel Knowles

Costume Creators:

Bryony Anderson, Kasia Tons
& Sara Yael/Lily Castel

Producer:

Insite Arts

Contributing Dancers:

Fleur Elise Noble, Daniel Fels,
Sarah Reid, Jack Ladd, Tina
Torabi, Helen Smith, Alana
Hoggart, Adam Forbes, Tim
Bennett, Ruby Ladd, Clare
McDonald, Tom Carlyon,
Gabrielle New, Pierre Proske,
Tony Martin, Mish Birch, Jack
Tuathail, Jonathan Van Dujin,
Matthijis Bill Rietveld, Falco
Ara Macao, Marlin-Jack Melis,
Emelia Bickerdike, Roy Chang
& Yollana Shore

World Premiere

7.30pm, Tue 21 – Sat 25 Nov

3pm, Sun 26 Nov

70 mins

\$35/\$30/\$25

A girl meets a half-man-half-kangaroo in her dreams, and falls in love. Obsessed by his reality, and the idea of becoming a part of it, she takes desperate measures to spend more time with him. This obsession leads her into the darkest depths of the human psyche.

Like a low-tech hologram or a high-tech paper pop-up book, *ROOMAN* transports us inside worlds of animated universes as they unfold upon a giant, three-dimensional paper set.

Extraordinary artist Fleur Elise Noble presents an exquisitely textural visual performance that beautifully weaves puppetry, projection, drawing and dance.

Heartwarming, heartbreaking, and a story that we can all, in some way, relate to, *ROOMAN* is a visual-musical extravaganza about following your dreams, waking up, and living.

Image: John Feely

WE ARE LIGHTNING!

Joseph O'Farrell (JOF) & Sam Halmarack



Written, Devised & Composed by:
Sam Halmarack & JOF

World Premiere

7pm, Wed 6 – Sat 9 Dec
2pm, Sat 9 Dec
5pm, Sun 10 Dec

Access:
Audio Description –
Sun 10 Dec
55 mins
\$35/\$30/\$25

Warning:
Smoke effects, some
loud music, possible strobe
effects

You are invited to the final requiem for the last music joint left in town.

JOF (The Suitcase Royale) and the UK's Sam Halmarack (Festival of Live Art, 2014) combine theatre with the fist-pumping euphoria and power ballads of a stadium gig in, *WE ARE LIGHTNING!*, a darkly comical work that reflects on the importance of communal spaces where people can come together and express themselves.

North Melbourne Town Hall is transformed into a music venue on the brink of closure. A teen band, a community choir and ageing rockers join JOF's drums and Sam's guitar to mark and protest its demise, leading audiences through a strange ceremony and heartfelt celebration of how music shapes the lives of the people that play it.

Join us for our last chance to come together and be saved by music.

Image: Paul Blakemore

Up, Art & Away! Art Superheroism with TextaQueen

On display in the Arts House
windows from Sat 2 Dec to
Sun 7 Jan, 2018
FREE

What superpowers do artists need to create and survive in the arts universe? In *Up, Art and Away!* TextaQueen seeks to draw out answers via bold and bright superhero scenarios, peeking out of the Arts House windows.

TextaQueen is Australia's felt-tip superhero. Her portraits use the humble and unforgiving felt-tip pen – aka 'Texta' – to explore the complex politics of race, sexuality, gender and identity in tandem with ideas of self-image

and interpersonal relationships. Born out of a collaborative exchange of ideas between artist and subject, TextaQueen's work articulates delicate interplays between vulnerability and empowerment, intimacy and exhibitionism, and subjective and collective expressions of feminist, queer, racial and cultural identities.

Image: TextaQueen





Arts House Develops

Arts House takes a holistic approach to supporting the entire life cycle of artistic creation – from great ideas to incubation and development, and from premiere seasons to presentation as part of international events such as Dance Massive and the Festival of Live Art.

We are a curated venue that has ongoing conversations with artists and companies about a range of programs and contexts. Below are a number of ways that you can get involved.

CultureLAB

Research and development is crucial to the life cycle of a strong contemporary arts culture. For this reason, Arts House provides time, space and financial assistance of up to \$10,000 for selected independent artists and companies to explore, experiment, investigate and create new work (at any stage of development, but not presentation ready). Through CultureLAB, Arts House offers dedicated on-site creative developments for artists across all art forms. Expressions of Interest for CultureLAB are invited from 24 July till 21 August 2017. Visit artshouse.com.au for more information.

CultureLAB Artists, Season 2, 2017

- Angela Goh
- Daniel Jenatsch
- Jo Lloyd
- Sarah-Jane Norman
- Melanie Jame Wolf

Introduce Yourself

If you are new to Arts House, prefer expressing your ideas in writing or believe Arts House is a good fit for you, we invite you to tell us a little bit about yourself and your projects. Visit artshouse.com.au for more information.

Artists-in-Residence, Season 2, 2017

Mariaa Randall

Mariaa Randall is a graduate of the NAISDA Dance College and the Victorian College of the Arts. Her most recent projects include the premiere of her new work *Diversity* at Dance Massive 2017; *HA LF*, a solo work; *Poetry in Motion*, created in collaboration with second-year VCA dance students; *Painting the Dance*, a danced installation; choreographing Jacob Boehme's solo work *Blood on the Dance Floor*; and directing *Tanderrum* for ILBIJERRI Theatre Company. She continues to teach, dance and make movement with others as an independent artist.

Carly Sheppard

Carly Sheppard is an emerging cross-disciplinary performance artist whose work encompasses dance and theatre performance, sculpture, drawing, voice and installation. Often these forms feature interchangeably within a single work, housed within the foundation of the moving body. Her work predominantly explores the experience of being a part of Australia's Indigenous diaspora; and the concept of the 'sovereign body' as home for intersecting identities and the navigation of transgenerational inheritances.

Mariaa and Carly's residencies are supported by Arts House in partnership with Sydney Opera House Presents.

Jen Rae

Jen Rae is a Canadian Métis (Indigenous)/Australian artist–researcher engaged in the discursive field of contemporary environmental art, and a scholar in arts-based environmental communication. Her creative practice and research interests are grounded in transdisciplinary collaborative methodologies and ecological futures thinking. She is co-founder and director of The Riparian Project, and a co-founder of Fair Share Fare, a multi-platform project that uses food as a medium to explore the complexities of climate change and provoke conversations around food system knowledge, future-preparedness and what it means to be resilient.

wāni

(The Listening Program Artist-in-Residence as part of Refuge)

wāni is a Congo-born, New-Zealand-raised and Melbourne-based poet with a flair for spoken word. He uses his artistic abilities to pursue his commitment to the flourishing of life and the telling of the untold, as well as the collective empowerment of those peoples too-often marginalised and too-rarely celebrated.

Jacqui Shelton

(The Listening Program Artist-in-Residence)

Jacqui Shelton is a Melbourne-based artist whose work engages with the politics and poetics of the voice and temporal relations. Spanning performance, video, sound, text and sculpture, her work uses the potential within words – both spoken and written – and their manifestation in a body, to approach political and social difference, as well as empathy. She is currently a PhD candidate at Monash University, and has exhibited at galleries in Australia and overseas including Incinerator Gallery, West Space, CareOf (Milan), Screen Space and Bus Projects.

Artists-in-Residence

Arts House runs residencies at various times throughout the year, providing an opportunity for artists to have time in-house in a supported environment, interact and meet local community, and work with our producers developing special projects or initiatives. Artists-in-Residence is an invite only program.



Mariaa Randall



Carly Sheppard



Jen Rae



wāni



Jacqui Shelton

We All Know What's Happening is supported by Arts House, Creative Victoria and Save the Children.

TRIBUNAL is produced by PYT | Fairfield. *TRIBUNAL* was first presented at Griffin Theatre Company in 2016 with support from the Sidney Myer Fund. PYT | Fairfield acknowledges the support of the Australia Council for the Arts, Create NSW and Fairfield City Council.

Excerpts from the Past was originally commissioned by Iziko South African National Gallery and the Friends of the South African National Gallery. It was conceived and produced by Sethembile Msezane. It has subsequently been performed at the Institute for Creative Arts (ICA) Live Art Festival in South Africa.

Respectable Thief is supported by Pinchuk Art Centre and Espaço Espelho d'Água.

Sonic Hieroglyphs is supported by Heavy Metal Jewellers Brunswick, Red Cross Shops, Present Story Gift & Homewares Emporium, and Isabelle Harrison Barristers & Solicitors Pty Ltd.

Pile of Bones is supported by the Australian Government through the Australia Council, its arts funding and advisory body. It is generously supported with studio residencies from Lucy Guerin Inc and Chunky Move.

Nightdance is supported by the Australian Government through the Australia Council for the Arts, its arts funding and advisory body, and Arts House through its 2016 CultureLAB program.

Speak Percussion is supported by the federal government through the Australia Council, its arts funding and advisory body; the Victorian Government through Creative Victoria and the Department of Education and Training; local government through the City of Melbourne and the City of Darebin; and the Speak NOW commissioners.

Melbourne Fringe is supported by the City of Melbourne, Creative Victoria and Bank Australia.

The Children's Party is supported by Arts House and Melbourne Fringe; the Australian Government through the Australia Council, its arts funding and advisory body, and Creative Victoria.

Refuge is supported by the Australian Government through the Australia Council, its arts funding and advisory body; and the University of Melbourne.

Refuge supporting partners are Emergency Management Victoria, Red Cross Australia, SES Footscray Division, The Huddle at The North Melbourne Football Club, the University of Melbourne's Research Unit in Public Cultures, Resilient Melbourne, ACTNatimuk, Nati Frinj Biennale and Horsham Rural City Council. Participating artists and friends include Hannah Donnelley, Lee Shang Lun, Greg Pritchard, Jillian Pearce, Kate Sulan and Dawn Weleski.

ROOMAN is supported by the Australian Government through the Australia Council, its arts funding and advisory body; Arts SA, Arts Queensland, Windmill Theatre Company and The Coopers Malthouse.

WE ARE LIGHTNING! is supported using public funding by Arts Council England.

Presented by

ARTS
HOUSE

M CITY OF
MELBOURNE

Government Partners

Australian Government

Australia
Council
for the Arts

CREATIVE VICTORIA

Refuge Partners

THE UNIVERSITY OF
MELBOURNE

Our program is made possible by additional support to the artists from:

LOTTERY FUNDED
ARTS COUNCIL
ENGLAND

NSW
Create NSW
Arts, Screen & Culture

Queensland
Government
Arts Queensland

ARTS
SOUTH
AUSTRALIA

Bank Australia
RESPONSIBLE BANKING

MAXI
MISED BY
CHUNKY MOVE

Creative
Europe

eea grants
norway grants

FairfieldCity
Celebrating diversity

insite arts

LUCY
GUERIN
INC.

MELBOURNE
TRAVELLER

MELBOURNE
FRINGE

pyt fairfield

Save the Children

Sidney Myer
FUND

CERES
TAMIL FEASTS
விருந்து

THE UNIVERSITY OF
SYDNEY

UNIVERSITY
OF WOLLONGONG
AUSTRALIA

VOORUIT

WINDMILL
THEATRE CO

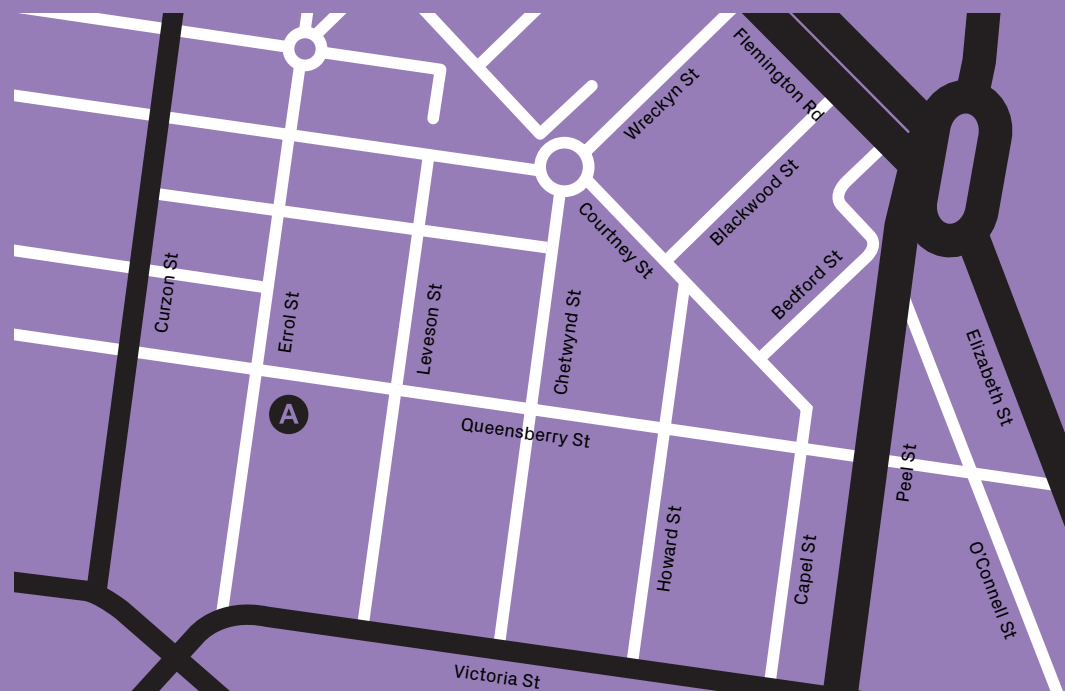
ISABELLE HARRISON PTY LTD
Barristers & Solicitors

HEAVY
METAL

present
story

RED
CROSS
SHOPS

North Melbourne



Arts House
521 Queensberry Street,
North Melbourne VIC 3051

Bookings & General Enquiries:
(03) 9322 3720

Public transport:
Tram 57 – Stop 12, corner
Queensberry & Errol Streets,
North Melbourne

Getting Here

Arts House is located in the North Melbourne Town Hall, at 521 Queensberry Street, North Melbourne.

Car

There is limited metered on-street parking on Queensberry and Errol Streets, as well as accessible on-street parking on Queensberry Street (150m from our accessible Errol Street entrance).

Tram

Route 57 (high-floor trams only) – Stop 12, North Melbourne Town Hall (does not offer a low-floor stop).

Train

Arts House is approximately 15 minutes' walking distance from either North Melbourne Station or Flagstaff Station.

Walk

Arts House is approximately 30 minutes' walking distance from the Melbourne CBD.

We welcome all visitors to Arts House events and are committed to ensuring that our program is as accessible as possible, for everyone to enjoy.

We encourage you to call or email us if you have any questions about accessibility or would like to discuss your requirements with us. You can contact us at artshouse@melbourne.vic.gov.au or on (03) 9322 3720.

**Auslan Interpreting**

Auslan interpreters will stand to the side of the speaker of performed action and translate text and dialogue into Auslan while signing live.

We All Know What's Happening

Sat 22 Jul

5pm

Including Post-Show Q&A

TRIBUNAL

Fri 21 Jul

8:15pm

The Children's Party

Sun 24 Sep

4pm

Refuge

Sat 11 Nov

There will an Auslan interpreter at *Refuge*. To enquire about times please contact us.

**Audio Description**

Audio description enhances the live theatre or film experience for people who are blind or have low vision.

WE ARE LIGHTNING!

Sun, 10 Dec

5pm

Refuge

Sat 11 Nov

Audio Description will be available at *Refuge*. For further enquires please contact us.

**Wheelchair Access**

Arts House venues are wheelchair accessible. However, given the nature of some shows, some performances may be restricted. Please give us a call on (03) 9322 3720 to discuss your requirements.

Companion Card

Arts House supports the Companion Card program. For patrons who require the assistance of a companion or carer, a second ticket is issued at no cost to the Companion Card holder. To book a Companion ticket, call the Arts House box office on (03) 9322 3720.

Accessible Program Guide

You can download the program in an accessible word document on our website.

Venue Accessibility

If you are attending an event at Arts House or have an appointment to meet us, you can use our accessible entrance in Errol Street. There are accessible toilets on every floor of Arts House and you can reach all levels via a lift.

How to Buy Tickets

Tickets can be purchased at the Arts House box office, online at artshouse.com.au or by phone on (03) 9322 3720. Please note there will be a \$1.50 transaction fee per booking, when booking online or by phone.

Concession & Student Tickets

Concession prices apply for persons aged 14 years and under, full pensioners, Victorian Carer Card holders, Seniors Card holders, welfare benefit recipients and the unemployed. Full-time and part-time students are able to attend specified shows for a discounted price. You must have a valid student card to access this discount. Proof of concession or student eligibility is required at point of sale and upon entering venues.

Price points in guide are as follows:
Full price/Concession/Student

Refunds & Exchanges

Arts House regrets it is not possible to refund completed bookings, except as required by the LPA Ticketing Code of Conduct. Exchanges are only permitted for another performance of the same event, and must be arranged via the ticketing team by calling (03) 9322 3720.

Green Tix for Nix

Get here green and we'll keep the ticket price lean. Arts House is paving the way to a more sustainable future with Green Tix for Nix. For certain performances, if you get here 'green' you'll pay nothing to see the show. We will want to see your bike helmet, freshly touched-off myki or smokin' sneaker soles when you arrive.

Green Tix for Nix performances for Season 2, 2017:***Nightdance***

7.30pm, Sat 26 Aug

ROOMAN

7.30pm, Sat 25 Nov

We Are Lighting!

2pm, Sat 9 Dec

Although your ticket is free, you will need to book in advance and pay a \$1.50 transaction fee – book either online at artshouse.com.au using the promo code 'GREEN', or by phone on (03) 9322 3720. Green Tix are limited to two per person and are available two weeks prior to the performance date.

Locals Discount

If you're a local, you can purchase tickets to all Arts-House-presented events at concession prices. You'll just need to show us proof of residence when you pick up your tickets – all residents of North Melbourne, West Melbourne, Kensington and the CBD are eligible. Book online at artshouse.com.au using the promo code 'LOCAL', or by phone on (03) 9322 3720.

Nightdance, Melanie Lane. Image: Jody Hutchinson




| Season 2 | Calendar | |
|--|--|---|
| <div> <div> <div>July</div> <div> <p>Wed 19 – Sat 22 We All Know What’s Happening Samara Hersch & Lara Thoms 6.15pm, Wed 19 – Fri 21 5pm, Sat 22, with Post-Show Q&A 75 mins \$35/\$20/\$25 Warning: Children of all ages are welcome to attend this show, however it does contain some adult concepts Access: Auslan Interpreted – 5pm, Sat 22 + Q&A</p> <p>Thu 20 – Sun 23 TRIBUNAL PYT Fairfield 8.15pm, Thu 20 – Sun 23 3pm, Sat 22 5pm, Sun 23 70 mins \$35/\$30/\$25 Warning: Smoke effects, adult concepts of violence and trauma Access: Auslan Interpreted – 8:15pm, Fri 21</p> <p>Sun 23 The Long Lunch Jamie Lewis 1pm, 2pm & 3pm, \$10 This is a durational event. Please book for one of the sittings above, but note, you are welcome to come and go as you please</p> </div> </div> </div> <div> <div> <div>Tue 25</div> <div> <p>Supper Club: Place & Displacement Asha Bee Abraham & Dan Koop 7pm 120 mins \$25/\$20</p> <p>Wed 26 – Fri 28 Tales of an Afronaut wāni 7pm 40 mins \$15 /\$10</p> <p>Thu 27 – Sat 29 Respectable Thief Nástio Mosquito 8pm 45 mins \$35/\$30/\$25 Warning: Explicit language</p> <p>Sat 29 & Sun 30 Open House Melbourne Arts House 10am - 1pm FREE</p> <p>Sun 29 – Sun 30 Excerpts from the Past Sethembile Msezane 5pm, Sat 29; 2pm, Sun 30 Each performance includes an artist Q&A 60 mins \$20/\$15</p> <p>Sat 29 – Sun 30 Sonic Hieroglyphs Stéphanie Kabanyana Kanyandekwe 1pm–7pm FREE This is a durational event - you can come and go as you please</p> </div> </div> </div> <div> <div> <div>Sat 29</div> <div> <p>The Listening Program Open Studio Jacqui Shelton 2pm 60 mins FREE</p> <p>Wed 19 – Sun 30 The Community Reading Room Torika Bolatagici 11am–7pm, Wed 19 – Fri 21, Wed 26 – Fri 28 1pm–7pm, Sat 22 & Sun 23, Sat 29 & Sun 30 FREE</p> <p>Sun 30 DISPLACE AND DISPLANT 5pm 120 mins FREE</p> <p>Sun 30 Art & Action: Displacing Whiteness in the Arts Tania Cañas with Sethembile Msezane & Eugenia Flynn 3.30pm 90 mins \$10</p> </div> </div> </div> | <div> <div> <div>Thu 24 – Sun 27</div> <div> <p>Nightdance Melanie Lane 7.30pm, Thu – Sat 26; 2pm, Sat 26; 3pm, Sun 27 60 mins \$35/\$30/\$25 Green Tix: 7.30pm, Sat 26</p> </div> </div> </div> <div> <div> <div>Sun 15</div> <div> <p>North Melbourne Spring Fling Arts House 10am – 3pm FREE</p> </div> </div> </div> | <div> <div> <div>Tue 21 – Sun 26</div> <div> <p>ROOMAN Fleur Elise Noble 7.30pm Tue 21 – Sat 25 3pm, Sun 26 70 mins \$35/\$30/\$25 Green Tix: Sat 25</p> </div> </div> </div> |
| | <div> <div> <div>November</div> <div> <p>Wed 8 Refuge Supper Club 7pm 90 mins \$25/\$15</p> <p>Thu 9 – Fri 10 Refuge Open Studios 6pm 120 min FREE. Bookings required</p> <p>Sat 11 Emergency Relief Centre 12pm–10pm FREE Auslan Interpreted and Audio Description Tour available. For more details check the Arts House website or call Arts House.</p> <p>Sat 11 – Sun 12 Refuge 24-Hour Exercise 12pm, Sat 11 – 12pm, Sun 12 FREE. Bookings required Warning: This event is for people aged 18 years and older</p> <p>Wed 1 – Sat 11 in extremis 10am–6pm, Wed 1 – Sat 11 FREE (Exhibition Opening: 6–9pm, Tue 31. FREE)</p> </div> </div> </div> | <div> <div> <div>December</div> <div> <p>Wed 6 – Sun 10 WE ARE LIGHTNING! JOF & Sam Halmarack 7pm, Wed 6 – Sat 9 Dec 2pm, Sat 9 Dec 5pm, Sun 10 Dec Access: Audio Description – Sun 10 55 mins \$35/\$30/\$25 Green Tix: 2pm, Sat 9 Warning: Smoke effects, some loud music, possible strobe effects</p> <p>Sat 2 Dec – Sun 7 Jan Up, Art & Away! Art Superheroism with TextaQueen On display in the Arts House windows FREE</p> </div> </div> </div> |
| | <div> <div> <div>September</div> <div> <p>Tue 5 – Sat 9 Assembly Operation Speak Percussion 7.30pm 45 mins \$35/\$30/\$25</p> <p>Thu 14 – Sun 1 Melbourne Fringe at Arts House Fringe Club is free. Events by independent artists are ticketed</p> <p>Sun 24 The Children’s Party Ben Landau & Alex Walker 4pm 70 mins FREE but ticketed Access: Auslan interpreted</p> </div> </div> </div> | <div> <div> <div>October</div> <div> <p>Sat 7 – Sun 8 Survival Skills for Desperate Times Arts House & Melbourne Festival 11am, 2pm, 5pm 120 mins Tickets available from Wed 26 Jul</p> </div> </div> </div> |

Arts House

521 Queensberry St,
North Melbourne VIC 3051

(03) 9322 3720
artshouse.com.au

 /artshousemelbourne

 @artshousemelb

 @artshouse

Arts House, as a key program of the City Of Melbourne, is Melbourne's centre for contemporary and experimental performance and interactive artforms, providing a nexus for cultural expression and social connection in a city environment. We support new and diverse ways to make and experience art. We produce and present art which is participatory and experiential, interdisciplinary and trans-disciplinary, curated through a balance of provocation, responsiveness and collaboration with artists and audiences.



CITY OF MELBOURNE

**ARTS
HOUSE**