

**salt.**

**Selina  
Thompson  
Ltd**

Presented by  
Arts House for  
Next Wave Festival  
2018

**Australian Premiere**  
8pm, Wed 9 – Sat 12 May  
75 mins  
Warning 14+



# Creative Team

**Writer & Performer:**

Selina Thompson

**Director:**

Dawn Walton

**Designer:**

Katherina Radeva

**Lighting Designer:**

Cassie Mitchell

**Relights:**

Louise Gregory

**Sound Designer:**

Sleepdogs Collective

**Dramaturgical support:**

Maddy Costa, Season

Butler & Bryony Kimmings

**Producer:**

Emma Beverley

**Production Manager:**

Louise Gregory

**Photography &**

**Documentation:**

Richard Davenport

# Artist Statement

**After Saidiyah Hartman**

I am here to excavate wounds.

I was in Melbourne for about a week in March and was struck by what Blackness is, what Blackness isn't and what Blackness can be when it is situated within the Indian Ocean, the Southern Ocean and the Pacific Ocean, rather than the Atlantic Ocean.

My Blackness is bound and defined by the Atlantic: the Black Atlantic, the Middle Passage and the Door of No Return. It is a Blackness that defies cartography, in which the settler-coloniser is also the master.

So when I speak of Blackness from where I am, that is the only story that I can tell.

I leave Australia full of questions about what my work is here, where it stands in solidarity here, where it splinters off in a different direction here, where it is useful here. I do not expect to find easy answers.

**After Audre Lorde**

I hope that

*salt.* is anger expressed and translated into action in the service of a vision of the future. It attempts to liberate, strengthen and clarify. It is a painful act of translation.

I know that

'There is a timbre of voice that comes from not being heard and knowing that you are not being heard which is noticed only by others not being heard for the same reason'

And I hope that *salt.* is a work that hears

And that those whose lives share its timbre of voice can hear it also

I will perform it until nobody needs to hear it anymore

Smash Exhume Smash Grind Pulverise  
Grieve Smash Libate Break Re-Member  
Hold Smash Eye-to-Eye Uncover Smash  
Excavate Smash Smash Breathe Purge  
Offer Traverse Smash Speak Stain Prickle  
Smash Shatter Rewrite Overwrite Unwrite  
Trace Unfold Root Honour Decimate  
Smash Chain Pound Sweep

Smash  
Smash  
Smash

— Selina Thompson



# Biographies

## **Selina Thompson** Writer & Performer

Selina Thompson is an artist and performer whose work has been shown and praised internationally. Her practice is primarily intimate, political and participatory with a strong emphasis on public engagement that then leads to joyous, highly visual work that seeks to connect to those often marginalised by the arts.

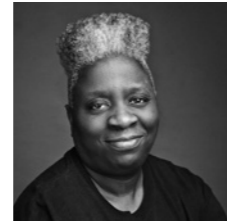
Since 2013 her live work has reached over 10,000 people.

She was featured in *The Stage* list of 100 Most Influential Leaders 2018 and has been described as “a force of nature” (*The Stage*, UK) and “an inspiration” (*The Independent*, UK), as well as being named by Buzzfeed in the Top 10 Black British Women Killing It In Their Field.



## **Dawn Walton** Director

Dawn Walton is Founder/Artistic Director of Eclipse Theatre Company. In 2017 she celebrated 20 years in the industry, beginning her directing career at the Royal Court Theatre and later acting Head of Studio-National Theatre. She has directed *Black Men Walking*, *A Raisin in the Sun* (Nominee UK Theatre Best Touring Production), *The Hounding Of David Oluwale* (TMA: Best Director nomination) and *salt.* (Selina Thompson Ltd). For Royal Court Theatre she directed the Olivier Award-nominated *Oxford Street* and *93.2fm*. For Young Vic Theatre she has directed *Winners* and *The Blacks* and for Sheffield Theatres *There's Only One Wayne Matthews*. Her other directing credits include *Lyrikal Fearta* (Sadlers Wells) and *Urban Legend* (Liverpool Everyman). With Eclipse Dawn developed and directed all of the 10by10 short film dramas now a featured collection on Digital Theatre Plus. She is a Trustee at Hackney Showroom (Chair) and Hull Truck Theatre, as well as being on various steering committees.



## **Emma Beverley** Producer

Emma Beverley is an independent producer based in the UK, working across multiple art forms.

She has presented work in a range of contexts including the Royal Court Theatre and the Edinburgh Festival Fringe, pubs, clubs, cafés and derelict storage units. She has placed performances in furniture shops and shipping containers, toured nationally and internationally and supported a range of artists across the country to deliver well-resourced and exceptional quality performance.

Emma is Executive Producer for Eclipse Theatre Company, Producer for Selina Thompson Ltd and founder of The Producer School. She recently worked with Leeds European Capital of Culture as Programmer and Homo Novus Festival (Riga, Latvia) to deliver their school for 10 international artists. Emma is alumni of the IETM Campus and was supported by the National Theatre throughout 2017 as part of Step Change.



## **Louise Gregory** Production Manager

Louise Gregory works as a Production & Stage Manager and Lighting & Sound Designer. For Selina Thompson she has been Production Manager for *salt.*, *Race Cards*, *The Missy Elliott Project* and the forthcoming *Sortition*.

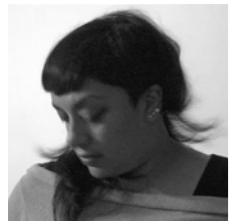
Other credits include Production Manager for *The Believers Are But Brothers* with Javaad Alipoor, *The Claim for Mark Maughan*; Production Manager/Set & Costume Designer for *The Siege of Christmas* for Contact Young Company/ Slung Low; Company Stage Manager for Scamp Theatre's production of *Stick Man*; and Technical Tour Manager for Third Angel's *Partus*. Recent design credits include Sound Designer for *Blackout* for Bunbury Banter Theatre Company, Lighting Designer for the butoh dance performance Project Godie for Surface Area Dance Theatre Company and Lighting Designer for *The Bug in the Cup* for Bunbury Banter Theatre Company.



# Biographies

## **Tanuja Amarasuriya** Sound Designer

Tanuja Amarasuriya is a Director and Sound Designer who works across theatre, film and digital sound. As a Director and Dramaturg she has worked with playwrights and theatremakers including Timothy X Atack, Dipika Guha, Sam Halmarack, Eno Mfon and Raucous. As Sound Designer she has worked with Selina Thompson and Sookie Greene. She is co-Artistic Director of Sleepdogs, a wide-ranging collaboration with writer and composer Timothy X Atack, that makes theatre, film and audio work characterised by imaginative storytelling and visceral, emotional, sensory aesthetics. Her work has been developed and presented nationally and internationally, including at the National Theatre (London), Bristol Old Vic, Seattle International Film Festival, Manchester Royal Exchange, Channel 4 television, Next International Film Festival (Bucharest), BIOS (Athens) and Sura Medura (Sri Lanka). She is a Leverhulme Arts Scholar attached to Bristol Old Vic, Director of Research at Theatre Bristol, and a resident at Watershed's Pervasive Media Studio.



## **Katherina Radeva** Designer

Katherina Radeva designs costume and set for theatre, contemporary dance, performance and everything in between. A Wimbledon School of Art graduate she was a Linbury Prize for Stage Design finalist in 2005. Since then she has worked on numerous small, big, touring, rep, outdoor and site-specific exciting and spectacular projects. Her designs have toured around the world.

Her credits include *Stick By Me* by Andy Manley, *Brothers Karamazov* at Tron Theatre, *Falling in Love with Frida* by Caroline Bowditch, *The Sphinx and The Books* for Lorena Rivero de Beer, *Epic* for Foster & Dechery, *Lay Me Down Safe* for Scottish Dance Theatre, *Elephant 21* for Mayhem Company, *Ill Met by Moonlight* for Moon Fool, *The Glass Mountain* for Trestle Theatre and *Hungry Ghosts* for Lost Dog Dance Theatre. Katherina also runs Two Destination Language, an award-winning theatre company and designs include *Near Gone*, *Manpower*, *Declining Solo*, *Landed* amongst many others.



# With thanks to

**Maddy Costa, Season Butler and Bryony Kimmings for their dramaturgical support, Hannah Randall for the beautiful costume, Humphrey Barclay Productions and Channel 4 for archive footage, Lucy Touray, Sherrie Eugene-Hart, Dr Charlotte Cooper and the 200 kind and generous supporters who donated towards our voyage across the Atlantic.**

Arts House, as a key program of the City of Melbourne, is Melbourne's contemporary centre for performance and interactive artforms. We support new and diverse ways to make and experience art which is participatory and experiential, interdisciplinary and trans-disciplinary, curated through a balance of provocation, responsiveness and collaboration with artists and audiences.

For more information, please contact us on the details below.

521 Queensberry Street  
North Melbourne VIC 3051  
(03) 9322 3720

[artshouse@melbourne.vic.gov.au](mailto:artshouse@melbourne.vic.gov.au)  
[artshouse.com.au](http://artshouse.com.au)

Bookings:  
[artshouse.com.au](http://artshouse.com.au) or  
(03) 9322 3720

Arts House acknowledges the traditional land upon which we are located, of the Wurundjeri and Boon Wurrung people of the Kulin nation; and we pay our respects to Elders both past and present, and, through them, to all Aboriginal and Torres Strait Islander people.

**ARTS  
HOUSE**

**M** CITY OF  
MELBOURNE

