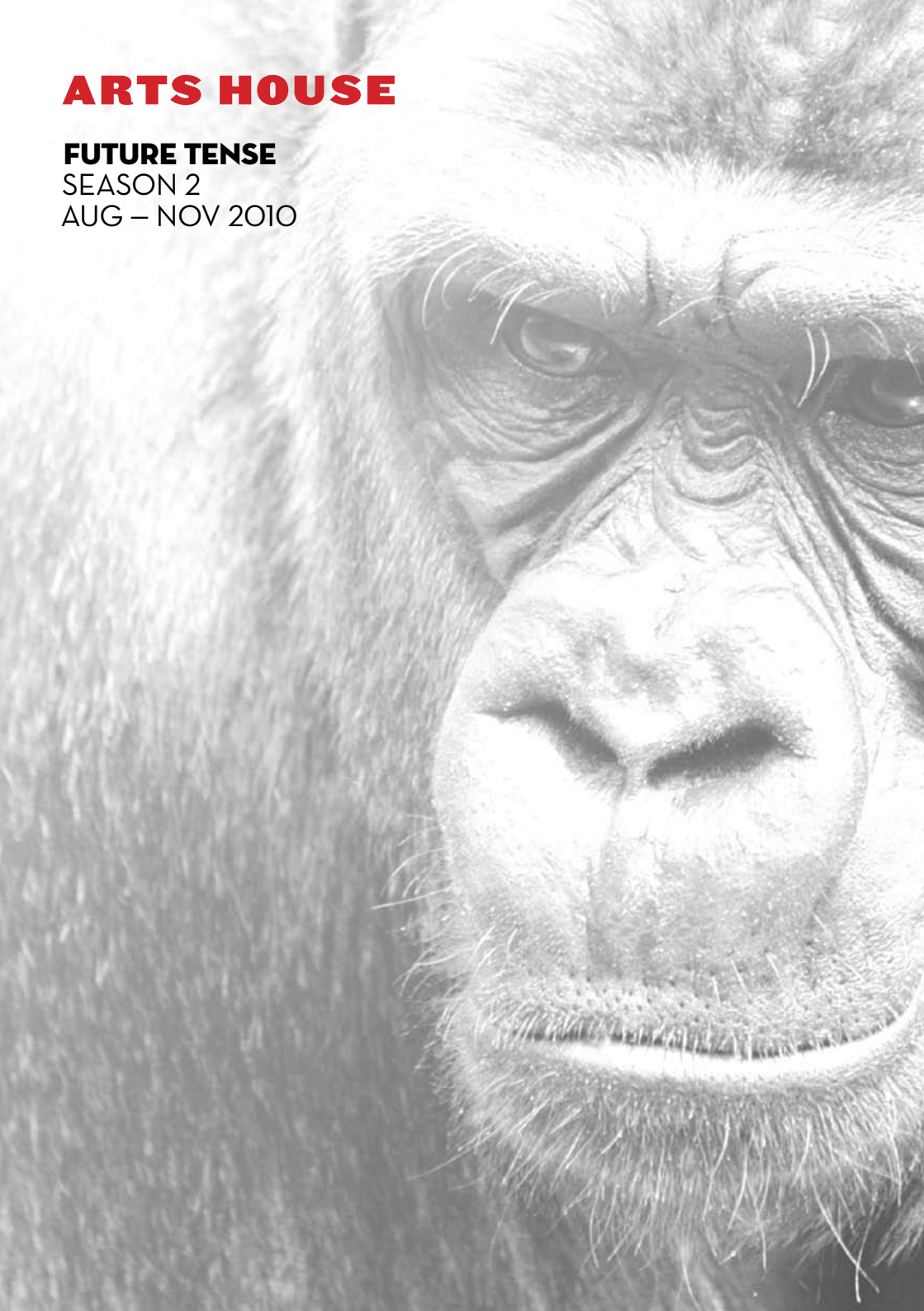


# **ARTS HOUSE**

**FUTURE TENSE**

SEASON 2

AUG – NOV 2010



# FUTURE TENSE

The Future Tense program continues Arts House's bold commitment to art that challenges our preconceptions and values. We celebrate artistic practice that expands the traditional relationship between artist and audience and introduces an element of creative exchange.

The work we will bring to you during our August theatre season represents a snapshot of exhilarating contemporary theatre practise from well established artists alongside emerging artists. In October Arts House also continues strong co-programming initiatives with Melbourne International Arts Festival realising inspiring works across Melbourne.

We are also thrilled to launch the Six Degrees project which invites sound artists to create works which reflect on the challenges of climate change and global warming and the inter-connectedness of humanity.

*"Imagine if we succeed in inspiring our audiences to reduce their own impacts on climate change by just one percent. That would be like turning the State of California off for almost two months."*  
Rupert Murdoch

We trust that you will again take the Arts House journey into an exciting unknown.

**STEVEN RICHARDSON**  
Artistic Director

Australia is home to the oldest living culture on earth. Respect and engagement with this ancient culture and its contemporary lineage continues to make a unique contribution to creativity in this place and inspire our collective consciousness and understanding. Arts house acknowledges and respects the customs and traditions of Indigenous Australians and their special relationship with the land. The artists and organisers respectfully acknowledge that this program takes place on the land of the traditional owners of the Kulin Nation.

SUBSCRIBE TO E-NEWS AT  
[ARTSHOUSE.COM.AU](http://ARTSHOUSE.COM.AU) TO  
RECEIVE THE LATEST NEWS,  
REVIEWS AND PREVIEWS



Arts House is a City of Melbourne contemporary arts initiative.

# SEASON 2

AUG – NOV 2010

## 3 - 8 AUGUST

### **Madeleine**

Jenny Kemp and Black Sequin Productions

## 11 - 15 AUGUST

### **Superheroes**

Stone/Castro

## 12 - 15 AUGUST

### **Two Dimensional Life of Her**

Fleur Elise Noble

### **Fraudulent Behaviour**

Rosie Dennis

### **The Bougainville Photoplay Project**

Version 1.0

## 13 - 15 AUGUST

### **Etiquette**

Rotozaza (UK)

## 25 - 29 AUGUST

### **Pin Drop**

Tamara Saulwick

## 19 - 23 OCTOBER

### **en masse**

Genevieve Lacey  
and Marc Silver (UK)

### **epi-thet**

Madeleine Flynn, Tim Humphrey  
and Jesse Stevens

## 9 - 14 NOVEMBER

### **EXPECTATION**

Carlee Mellow

## 16 - 20 NOVEMBER

### **Irony Is Not Enough:**

**Essay on my Life as Catherine Deneuve**  
Fragment31

## 24 - 27 NOVEMBER

### **Basically I Don't But Actually I Do.**

Jochen Roller (Germany)  
and Saar Magal (Israel)

## ARTS HOUSE

Arts House is a City of Melbourne contemporary arts initiative. Each year Arts House presents a curated program of contemporary art featuring performances, exhibitions, live art installations and cultural events.

Arts House operates as a multi-dimensional resource hub for artists: producing, programming, devising, supporting and funding. Work is presented across two sites: Arts House, North Melbourne Town Hall and Arts House, Meat Market.

Arts House values arts and culture that help create a world where people are actively engaged, aware and empowered to participate, politically and culturally, to make positive change.

For access enquiries please contact Arts House on 03 9322 3713 prior to booking.

Disclaimer: Program details are correct at the time of printing but are subject to change where necessary and without notice. Please check the website for updates.

Graphic Design: **Famous Visual Services**





# GREEN TIX FOR NIX

SUPER GREEN WEEKEND –  
LEAVE THE CAR AT HOME  
14 AND 15 AUGUST 2011

## GO EMISSION FREE - GET SHOW FREE

Help offset the carbon footprint and redeem cultural credits over the Arts House SUPER GREEN WEEKEND. Featuring:

- Superheroes
- The Bougainville Photoplay
- 2 Dimensional Life of Her
- Fraudulent Behaviour

On Saturday 14 and Sunday 15 August, Arts House will exchange free entry to a matinee performance on proof of an emission-free mode of transport a) tram ticket, b) bike helmet or c) increased heart rate from walking, boarding or blading.

\*Honour system applies and bookings essential.

## GREEN TIX APPLY FOR SINGLE OR DOUBLE-BILL ENTRY

Saturday double-bill matinee  
Superheroes (2pm) and  
2 Dimensional Life of Her (4pm)

Sunday double bill matinee  
Fraudulent Behaviour (3pm) and  
The Bougainville Photoplay (4pm)

Limited Green Tix also available across the Arts House season for early-bird bookings. Subscribe to the Arts House e-newsletter at [artshouse.com.au](http://artshouse.com.au) for all program offers and information.

## BOOKINGS ESSENTIAL -

Insert promotional code **GREEN** for Green Tix bookings at [artshouse.com.au](http://artshouse.com.au)



## ETIQUETTE ROTOZAZA, UK

*“... a magical, unthreatening experience... the act of relinquishing responsibility for thought, word and action is unique and the effect is unmissable.”* **British Theatre Guide**

**Etiquette** exposes human communication at its most delicate as a private exchange emerges between two anonymous people in a café.

**Etiquette** is a gripping, highly personal performance for two, where participants are both actor and audience. Unnoticed by other patrons, simple audio instructions are delivered by headphones in this intimate task-based performance.

Creators: **Rotozaza Co-Directors, Silvia Mercuriali, Ant Hampton**  
Project Management: **Alice Booth for ArtsAgenda, UK**

**Etiquette** is supported by the British Council

Image: **Īka Boljkovac**

## VENUE

Metropolitan Hotel  
Cnr Courtney and Blackwood Streets  
North Melbourne

## FREE

Bookings are essential

## BOOKINGS

[artshouse.com.au](http://artshouse.com.au)  
or 03 9322 3713

## FRI 13 - SUN 15 AUGUST

Multiple time slots available between 1pm and 6pm. See [artshouse.com.au](http://artshouse.com.au) for more details

30 minutes no interval

Two participants per performance

[rotozaza.co.uk](http://rotozaza.co.uk)

Audience members are required to wear headphones for the duration of the performance.

# MADELEINE

JENNY KEMP AND BLACK  
SEQUIN PRODUCTIONS

Presented by Arts House, Jenny Kemp and Black Sequin Productions

**Madeleine** - a shadow in the house of love.

Maddy is turning 19 and her sister returns to the family home for the birthday. She finds Maddy very changed. Her world is becoming increasingly bizarre as psychic forces beyond her control take hold. She is showing signs of schizophrenia. The family begins to split apart as each tries to deal with the situation in radically different ways. Desperate to obey the demands of her inner voices, Maddy proceeds regardless, dragging the whole family towards a tragic outcome.

**Madeleine** brings the uncertain world of mental illness into presence, for contemplation. It provides a space within which these concerns can become a reality – a poetic reality of beauty, humour and horror.

**Madeleine**, is the second work in a cycle based on mental illness. *Kitten*, premiered at the 2008 Melbourne International Arts Festival.

Writer/Director: **Jenny Kemp**  
Script/Production Dramaturg:  
**Richard Murphet**  
Movement: **Helen Herbertson**  
Set/Lighting Design:  
**Bluebottle – Ben Cobham**  
Lighting Realisation: **Jen Hector**  
Costume Design: **Harriet Oxley**  
Production/Operation: **Bluebottle**  
Performers: **Nikki Shiels, Margaret Mills,  
Natasha Herbert, Ian Scott,  
Richard Murphet**

**Madeleine** is supported by the Australian Government through the Australia Council for the Arts, its funding and advisory body.

Image: **Jeff Busby**

“IT’S POETIC. SENSUOUS. ENVELOPING. FULL OF ALARMING LONGINGS AND INTENSE DESIRES. ...KITTEN IS A PIN-SHARP STUDY OF HOW ONE WOMAN FAILS TO COPE WITH LOSS...IT IS ALSO ONE OF THE MOST GRAPHIC AND REMARKABLE STUDIES OF MANIA I’VE SEEN ON THE STAGE.”

Chris Boyd, Herald Sun (about *Kitten*)

## VENUE

Arts House  
▲ North Melbourne Town Hall  
521 Queensberry Street  
North Melbourne

## TICKETS

Full \$25 Conc \$18  
Preview \$15

## BOOKINGS

artshouse.com.au  
or 03 9322 3713

## TUE 3 - SUN 8 AUGUST

Preview, Tue 3, 7.30pm  
Wed 4 – Fri 6, 7.30pm  
Sat 7, 2.30pm & 7.30pm  
Sun 8, 4pm

90 minutes no interval

blacksequin.com

## WARNING

Adult concepts, smoke effects, violence,  
loud sound effects

Not suitable for children under 16



# SUPERHEROES

STONE/CASTRO



Presented by Arts House and Stone/Castro

**Superheroes**, Stone/Castro's latest contemporary theatre work, is a provocative reflection on Globalisation.

Meet six characters in a rest-home.

Isolated from the outside world, rivalries emerge as they regain their former strength and the various personalities vie for domination of their new territory.

As fiction and reality blur, they turn to saviours and heroes for hope and salvation. The fight is on to determine how best to steer humanity safely towards a new generation.

**Who are the real heroes of the sky? The Gods, the Superheroes, or the fighter planes?**

Since forming in 2003, Stone/Castro have written, created and toured their pieces to many Australian and European Venues and Festivals. Independently Jo Stone and Paulo Castro freelance for companies such as Les Ballet C de La B, Portuguese National Theatre, Chunky Move and the Schaubuhne-Berlin among others. Together they are recognised for forging unique humorous and corrosive contemporary theatre.

Concept/Director: **Jo Stone**  
 Writer/Dramaturg: **Paulo Castro**  
 Performers: **Julian Crotti, Nick Bennett, Lewis Rankin, Jo Stone, Paulo Castro, Hew Parham**  
 Set Design: **Wendy Todd**  
 Lighting: **Kerry Ireland**  
 Video: **Nic Mollison**  
 Sound: **Sascha Budimski**

**Superheroes** is supported by Arts SA, the Australian Government through the Australia Council, its arts funding and advisory body and through Vitalstatistix and Rodeo

Premiere performance: July 2010, Space Theatre, Adelaide Festival Centre

Image: **Jo Stone**

**"A REVOLUTIONARY, PSYCHOLOGICALLY CHALLENGING, DARING, DANGEROUS AND RICHLY REWARDING EXPERIENCE THAT IS STONE/CASTRO PRODUCTIONS."**

DB Magazine

## VENUE

Arts House  
 North Melbourne Town Hall  
 521 Queensberry Street  
 North Melbourne

## TICKETS

Full \$25 Conc \$18

## BOOKINGS

artshouse.com.au  
 or 03 9322 3713

## WED 11 - SUN 15 AUGUST

Wed 11 – Fri 13, 7.30pm  
 Sat 14, 2pm & 7.30pm  
 Sun 15, 4pm

65 minutes no interval

stonecastro.com

## WARNING

Adult concepts, mild coarse language, smoke effects, loud sound effects, simulated discharge of firearms, violence

Not suitable for children under 16

# 2 DIMENSIONAL LIFE OF HER

FLEUR ELISE NOBLE



Presented by Arts House and Mobile States

**2 Dimensional Life of Her** is a performance work made of drawing, animation, puppetry, projection and paper. In a space charged with possibility, the audience becomes part of a multi-dimensional real time artwork breathing with life. As the show unfolds, tensions build between surfaces and realities, as the act of creation separates itself from the artist who is responsible for its beginnings.

An artist's reality is confronted by an imaginary world that manages to escape from the confines of its two-dimensional existence. A richly imagined parallel world awakes as drawings reproduce themselves, drifting between surfaces, moving in and out of three dimensions.

Illusionary, captivating and cheeky, **2 Dimensional Life of Her** won Best in Show as part of the Under the Radar program at the Brisbane Festival 2008.

Concept/Director/Performer:  
**Fleur Elise Noble**  
Sound: **Jeremy Neideck**

**2 Dimensional Life of Her** is produced by Insite Arts, and toured by Performing Lines for Mobile States, a national touring initiative supported by the Australian Government through the Australia Council, its arts funding and advisory body.

"WONDERFULLY PLAYFUL,  
DELICIOUSLY DECEIVING...  
BRILLIANTLY PROVOCATIVE...  
STUNNING..."

Mary Brennan, Herald Scotland

## VENUE

Arts House  
▼ Meat Market  
5 Blackwood Street  
North Melbourne

## TICKETS

Full \$25 Conc \$18

## Double Bill with Fraudulent Behaviour

Full \$40 Conc \$30

## BOOKINGS

artshouse.com.au  
or 03 9322 3713

## THU 12 - SUN 15 AUGUST

Thu 12 - Fri 13, 8pm  
Sat 14, 4pm & 8pm  
Sun 15, 4pm

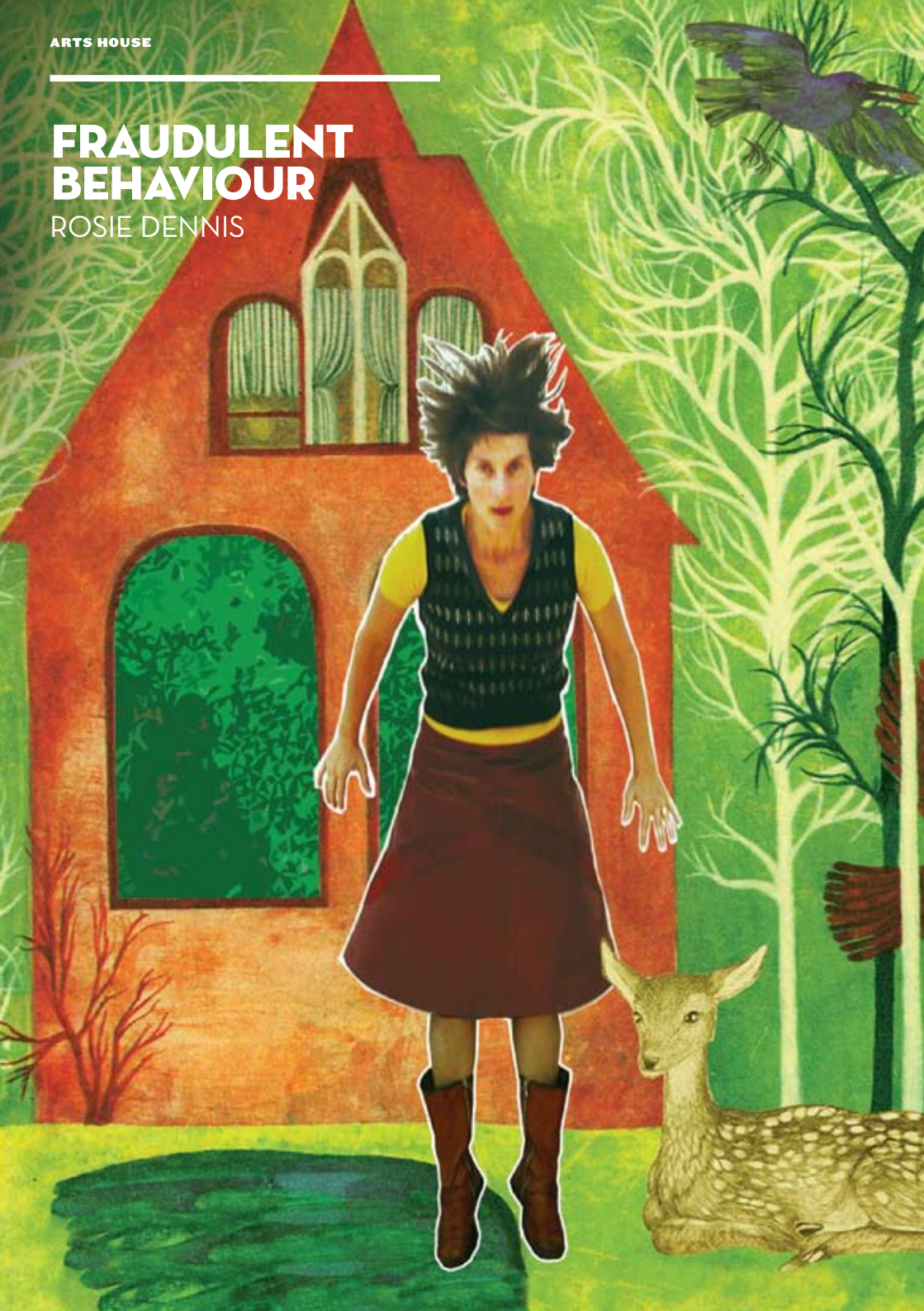
40 minutes no interval

fleurelisenoble.com  
insitearts.com.au



# FRAUDULENT BEHAVIOUR

ROSIE DENNIS



**Fraudulent Behaviour** uses prose, invisible friends, a decoy duck and cardboard cut-outs to create a witty and thoughtful performance in response to Nietzsche's assertion "We need lies in order to live..."

**Fraudulent Behaviour** is a philosophically playful exploration of everyday lies and self-deception.

The narrative unfolds using spoken word, movement and a series of objects that play with notions of what may be perceived as real.

Inherent in the work is a humorous use of language, both in delivery and writing style. Ideas, themes and content loop back on themselves to create a dense and evocative theatrical experience.

Conceptually, Dennis plays with notions of time and space, interweaving real and imagined worlds to create a compelling and insightful performance about the illusory nature of life.

Writer/Performer: **Rosie Dennis**  
Musician: **Simon Ferenci**

**Fraudulent Behaviour** is toured by Performing Lines for Mobile States, a national touring initiative supported by the Australian Government through the Australia Council, its arts funding and advisory body.

**Fraudulent Behaviour** has been co-commissioned by Arnolfini, UK, the Bluecoat, UK and Performance Space, Sydney with support from Department of Performance Studies USYD and Bundanon Artist Trust.

Image: Sylvia Zajkowski and Rosie Dennis

"...IT'S LOVELY TO BE LIED TO SO CONVINCINGLY..."

RealTime 92

## VENUE

Arts House  
▼ Meat Market  
5 Blackwood Street  
North Melbourne

## TICKETS

Full \$25 Conc \$18

## Double Bill with 2 Dimensional Life of Her

Full \$40 Conc \$30

## BOOKINGS

artshouse.com.au  
or 03 9322 3713

## THU 12 - SUN 15 AUGUST

Thu 12 - Fri 13, 7pm  
Sat 14, 2pm & 7pm  
Sun 15, 3pm

45 minutes no interval

suture.com.au



# THE BOUGAINVILLE PHOTOPLAY PROJECT

DEvised BY PAUL DWYER  
PRODUCED BY VERSION 1.0



Writer, academic and performer Paul Dwyer retraces three journeys made by his father Dr Allan Dwyer, a world-renowned orthopaedic surgeon, to Bougainville (PNG) during the 1960s, healing dozens of crippled children.

Family stories become entwined with the larger narrative of Australia's colonial enterprise over the years following – the opening of the giant Panguna copper mine, environmental devastation, a brutal civil war funded by Australia that cost the lives of up to 20,000 people, and finally, the post-war reconciliation process.

A performance style lecture which deftly combines field notes, oral history, a crash course in pidgin English, reconstructions of complex surgical procedures, letters, diaries, slides, Super-8 film and video installation, this is politics and performance at its most personal.

Devisor/Peformer: **Paul Dwyer**

Director: **David Williams**

Video Artist: **Sean Bacon**

Technical Production: **Russell Emerson**

**The Bougainville Photoplay Project** is toured by Performing Lines for Mobile States, a national touring initiative supported by the Australian Government through the Australia Council, its arts funding and advisory body.

version 1.0 inc is funded by the Theatre Board of the Australia Council and Arts NSW. This project is supported by the Dept. of Performance Studies, University of Sydney.

Image: **Heidrun Löhr**

**"WE ARE DRAWN INTO THE EVENT BY DWYER'S EASY-GOING, SELF-DEPRECATING MANNER. HIS TOUCH IS AS LIGHT AS HIS THEMES ARE SERIOUS. A POWERFUL STORY – BEAUTIFULLY TOLD."**

James Waites (online)

## VENUE

Arts House

North Melbourne Town Hall  
521 Queensberry Street  
North Melbourne

## TICKETS

Full \$25 Conc \$18

## BOOKINGS

artshouse.com.au  
or 03 9322 3713

## THU 12 - SUN 15 AUGUST

Thu 12 - Fri 13, 7.30pm

Sat 14, 2pm & 7.30pm

Sun 15, 4pm

75 minutes no interval

versiononepointzero.com



# PIN DROP

TAMARA SAULWICK



The stranger breathing down the phone, the thump on the roof in the dead of the night, the danger lurking in the unlit street. Part documentary, part art-house thriller, Saulwick's interdisciplinary work, **Pin Drop**, explores the phenomenon of fear in our day-to-day lives, and its impact on how we choose to live.

Built around a series of audio recordings from one-on-one interviews, **Pin Drop** is told through twelve voices: one live, eleven pre-recorded. The solo performer is not alone in what becomes a seemingly 'peopled' environment...

*'So I was out the back just reading and I felt this really strange sensation come all through my body... and I thought something has shifted in this house, something is different...'*

Creator/Performer: **Tamara Saulwick**  
 Composition/Sound Design/Operator: **Peter Knight**  
 Movement: **Michelle Heaven**  
 Design: **Bluebottle – Ben Cobham, Frog Peck**  
 Costume Design: **Harriet Oxley**  
 Production: **Bluebottle**  
 Technical Audio Consultant: **Myles Mumford**  
 Project Management: **Moriarty's Project**

**Pin Drop** is supported through the Australian Government through the Australia Council for the Arts, its funding and advisory body, and the Victorian Government through Arts Victoria.

Image: **Philip Greenwood**

## VENUE

Arts House  
 📍 North Melbourne Town Hall  
 521 Queensberry Street  
 North Melbourne

## TICKETS

Full \$25 Conc \$18  
 Preview \$15

## BOOKINGS

artshouse.com.au  
 or 03 9322 3713

## WED 25 - SUN 29 AUGUST

Preview - Wed 25, 7.30pm  
 Thu 26 - Fri 27, 7.30pm  
 Sat 28, 4pm & 7.30pm  
 Sun 29, 4pm

50 minutes no interval

## WARNING

Adult concepts, occasional course language, onstage smoke effects

Not suitable for children under 16

# EN MASSE

CREATED BY GENEVIEVE LACEY  
AND MARC SILVER (UK)

Presented by Arts House in association with Melbourne Festival

Created by recorder virtuoso Genevieve Lacey and filmmaker Marc Silver, **en masse** is part concert, part film, part installation.

Audiences are invited into the heart of a spherical space with dream-like images projected all around. In the midst of this evolving world, one musician plays live, her solo voice set against an electroacoustic backdrop.

**en masse** is a sensual experience that explores our chances of surviving an increasingly complex and chaotic world.

Performer/Composer: **Genevieve Lacey**

Film: **Marc Silver**

Installation Sound: **Lawrence English**

Musical Collaborators: **John Rodgers, Christian Fennesz, DJ Olive, Nico Muhly, Ben Frost, Steve Adam, Taylor Deupree**

Production Management: **trafficlight – Michael Jankie**

Sound: **Jim Atkins**

Lighting Designer: **trafficlight – Paul Lim**

Costume Designer: **Paula Levis**

Systems Designer: **nicedevice – Pete Brundle**

**en masse** is a new Australian work produced by Arts House and was commissioned by the Adelaide Festival, Melbourne Festival and Sydney Festival under the Australian Government's Major Festivals Initiative, managed by the Australia Council its arts funding and advisory body, in association with the Confederation of Australian International Arts Festivals Inc. Developed in the CultureLAB.

Image: **Famous Visual Services**

**“EN MASSE WAS A HYPNOTIC BLEND OF MUSIC, SOUND AND FILM, EXPERIENCED WHILE LAYING ON LOUNGES IN A DARKENED ROOM. BLISS.”**

The Weekend Australian

## VENUE

Arts House

📍 North Melbourne Town Hall  
521 Queensberry Street  
North Melbourne

## TICKETS

Full \$25 Conc \$18

## BOOKINGS

artshouse.com.au  
or 03 9322 3713

melbournefestival.com.au  
or 1300 723 038

## TUE 19 – SAT 23 OCTOBER

Tue 19 – Thu 21, 6.30pm & 8pm

Fri 22 & Sat 23, 5pm, 6.30pm & 8pm

30 minutes no interval

## INSTALLATION

### WED 20 – SAT 23 OCTOBER

Wed 20 – Thu 21, 1pm – 6pm

Fri 22 – Sat 23, 1pm – 4.30pm

30 mins on the half hour

## WARNING

Loud music, low seating, extreme black out



# EPI-THET

MADELEINE FLYNN,  
TIM HUMPHREY AND  
JESSE STEVENS



Presented by Arts House in association with Melbourne Festival

**epi-thet** is a mixed media sound installation activated by the audience.

Within a large cavernous space, three microscope platforms wait for the audience to stir them to life. Hidden within the microscope, a tiny vision flickers by - a story of the ways we describe ourselves and each other. Sounds begin beneath our feet and rise to the edges of the room. We watch and hear each other activate the work, unsuspectingly and collectively creating a physical and musical work of quiet beauty.

Inspired by an ANAT Synapse Residency with Dr Shane Grey at the Garvan Institute of Medical Research in Sydney, Madeleine and Tim have been working since 2008 on the sonification of research data, making it possible to hear as well as see a representation of the genetic process.

**epi-thet** uses data from public domain genetic databases to create sound and image. Using an algorithm that maps data from the genetic process to sound parameters, and information drawn simply from posture, a composition unique to each individual participant is created.

Creators: **Madeleine Flynn, Tim Humphrey, Jesse Stevens**

**epi-thet** is supported by ANAT Synapse, Experimenta and with assistance from the Arts House In Space program.

Image: **Dean Peterson**

## VENUE

Arts House  
▼ Meat Market  
5 Blackwood Street  
North Melbourne

## FREE

## FOR INFORMATION

artshouse.com.au or 03 9322 3713  
melbournefestival.com.au

## TUE 19 - SAT 23 OCTOBER

Open from 1pm - 9pm

madeleineandtim.net/epi-thet

# EXPECTATION

CARLEE MELLOW



Presented by Arts House and Carlee Mellow

*'The eye sees only what the mind is prepared to comprehend.'* Henri Bergson

A new work by Carlee Mellow, **EXPECTATION** challenges the way we see, sense and organise information. The line between what is real and what is imagined blurs and expands to create an altered space where physical and mental logic shift. Working with collaborators Kelly Ryall and Ben Cobham in a format that adapts and moves in real time, each performance is unique and different from the last.

Become immersed in this evocative work which struggles to be explained, but lingers long in the mind's eye.

Choreographer/Performer: **Carlee Mellow**

Musical composition and performance:

**Kelly Ryall**

Design: **Bluebottle – Ben Cobham**

Costume Design: **Doyle Barrow**

Dramaturgical Consultant:

**Margaret Cameron**

Production: **Bluebottle – Frog Peck**

**EXPECTATION** is supported by the Victorian Government through Arts Victoria and the Besen Family Foundation.

Image: **Igor Sapina**

**“MELLOW’S PERFORMANCE IS SUBTLE, YET POWERFUL, AND UTTERLY ENGAGING.”**

Hilary Crampton, *The Age*

## VENUE

Arts House

📍 North Melbourne Town Hall  
521 Queensberry Street  
North Melbourne

## TICKETS

Full \$25 Conc \$18

## BOOKINGS

artshouse.com.au  
or 03 9322 3713

## TUE 9 – SUN 14 NOVEMBER

Tue 9 – Sat 13, 7.30pm

Sun 14, 4pm

45 minutes no interval

## WARNING

Full frontal nudity, onstage smoke effects, strobe lighting



# IRONY IS NOT ENOUGH:

ESSAY ON MY LIFE AS  
CATHERINE DENEUVE  
FRAGMENT31

Presented by Arts House

A writer imagines herself, as a lecturer, imagining herself as Catherine Deneuve, contemplating an intimate relationship with a female student, and the frailty of desire - how would it be done, if she were Catherine Deneuve.

*"Shame is a rusty edge that Deneuve sits on as she pages through lecture notes in her Monday office."*

Fragment31 presents a new work based on the writing of Anne Carson in which language and image confront one another in a dislocated internal landscape - an exploration on the nature of identity and love.

*"Claws lope through her and turn at the wall."*

**Irony is not enough**...weaves literal images and lines from key Deneuve films alongside an imagined dialogue between the Greek philosophers Sappho and Sophocles, to create a complex web of interrogation.

*"What would Deneuve do now, she thinks..."*

Creators/Performers: **Anna Cordingly, Jen Hector, Luke Mullins, Leisa Shelton, Jethro Woodward**

**Irony is not enough** has been assisted by the Australian Government through the Australia Council for the Arts, its funding and advisory body.

Image: **Heidrun Löhr**

## VENUE

Arts House  
▼ Meat Market  
5 Blackwood Street  
North Melbourne

## TICKETS

Full \$25 Conc \$18  
Preview \$15

## BOOKINGS

artshouse.com.au  
or 03 9322 3713

## TUE 16 - SAT 20 NOVEMBER

Preview - Tue 16, 7.30pm  
Wed 17 - Fri 19, 7.30pm  
Sat 20, 2pm & 7.30pm

60 minutes no interval

# BASICALLY I DON'T BUT ACTUALLY I DO.

JOCHEN ROLLER (GERMANY)  
SAAR MAGAL (ISRAEL)



Presented by Arts House

In their new collaboration, German choreographer Jochen Roller and his Israeli colleague Saar Magal take a photo of an SS man shooting a Jewish woman - the starting point as they compile a catalogue of images and situations stored in their heads and bodies as phantoms of the memory of the Holocaust.

As children of the third generation, and grandchildren of both perpetrators and victims, they examine through choreography how these phantoms of memory influence the perception of the other.

What if the people in the photograph were originally Grandpa Roller and Grandma Magal?

Without direct access to the historical information that disappeared with their grandparents, they use various experimental stage set-ups to explore the ideas and realities that shape their German-Israeli relationship.

Creators/Performers: **Jochen Roller, Saar Magal**

Lighting Designer: **Marek Lamprecht**

Soundtrack: **Paul Ratzel**

Outside Eyes: **Elisabeth Nehring,**

**Regev Contes**

Production Management: **DepArtment / Harriet Lesch, Katharina von Wilcke**

A Production by Jochen Roller and DepArtment, in coproduction with Kampnagel Hamburg and Goethe-Institut Tel Aviv. Funded by Behörde für Kultur, Sport und Medien Hamburg and Fonds Darstellende Künste e.V.

**Basically I don't but actually I do.** is supported by the Goethe-Institut Australien, as part of 'Berlin Dayz'

Image: **Friedemann Simon**

"...THE PERFECT APPROACH TO DANCE THEATRE. ...THE PERFORMANCE RUSTLES, RATTLES, PITCHES AND DRONES. AS AUDIENCE YOU HARDLY DARE TO BREATHE."

taz hamburg

## VENUE

Arts House

▼ Meat Market

5 Blackwood Street  
North Melbourne

## TICKETS

Full \$25 Conc \$18

## BOOKINGS

artshouse.com.au  
or 03 9322 3713

**WED 24 - SAT 27 NOVEMBER**

7.30pm

55 minutes no interval

jochenroller.de

## I LIKE TO MOVE IT MOVE IT WORKSHOP MON 22 NOVEMBER

Berlin choreographer Jochen Roller shares his movement-generating devices in a one-day professional workshop.

Further details and registration at  
**artshouse.com.au**



# 6 DEGREES

## ARTIST RESIDENCY

Six degrees of separation (also referred to as the “Human Web”) refers to the idea that, if a person is one step away from each person they know and two steps away from each person who is known by one of the people they know, then everyone is at most six steps away from any other person on Earth.

If global temperature increases by six degrees Celsius the world will be uninhabitable. 6 Degrees is a new international artistic exchange and residency program at Arts House focussing on sound-art as a response to climate change and global warming. 6 Degrees works as a chain of artistic encounters using artist-to-artist exchange to create professional development opportunities, exciting new collaborations and eventually new work.

Based on the notion of “six degrees of separation” the project starts with the first sound artist creating a soundscape broadly responding to the issues of climate change.

This first artist identifies a second artist(s) as someone with whom they have not previously collaborated and whose sound/music practice presents new territory. Once invited into the exchange, they work together in residence at Arts House for one week towards the presentation of a new collaborative sound installation work around the issue of environmentalism.

On conclusion of the first sound-art encounter, Artist 2 takes over from Artist 1, and invites a third artist or artist group into a new collaboration. This process continues six times until the final artist(s) is invited into the chain to collaborate with Artist 1 and a cycle of artistic progression is complete.

See [artshouse.com.au](http://artshouse.com.au) for more information.

Image: © J.A.Dowdeswell



# DANCE MASSIVE

MELBOURNE

MARCH 15-27, 2011

## AUSTRALIAN CONTEMPORARY DANCE OFFICIAL PROGRAM LAUNCH NOVEMBER 2010

Dance Massive Melbourne is a national dance platform presented across three venues featuring outstanding Australian contemporary dance from both established and emerging companies and choreographers.

SUBSCRIBE TO THE **MASSIVE** E-NEWS AT  
[www.dancemassive.com.au](http://www.dancemassive.com.au) for  
program updates

Dance Massive is an initiative of Arts House, Malthouse Theatre and Dancehouse in conjunction with Ausdance Victoria and with the support of the Australia Council for the Arts and Arts Victoria

### PARTNERS

ARTS HOUSE



MALTHOUSE  
THEATRE

DANCEHOUSE D



Arts House is a City of Melbourne Contemporary Arts Initiative

### PRESENTING PARTNERS



ARTS  
VICTORIA



### ARTS HOUSE

## VENUE MAP

#### Arts House

**NORTH MELBOURNE  
TOWN HALL**

521 Queensberry St  
North Melbourne  
Tram: 57  
Melways: 2A J10

#### Arts House

**MEAT MARKET**

5 Blackwood St  
North Melbourne  
Tram: 59  
Melways: 2B A9  
(03) 9332 3713



### ARTS HOUSE REFERENCE PANEL

**Siu Chan**

**Sue McCauley**

**Martin Brennan**

**Samantha Comte**

**Christabel Harvey** – Arts Victoria  
representative for CultureLAB

#### CultureLAB recipients Aug – Nov 2010

Random Overtones, Luke George and  
Miguel Gutierrez, Paula Lay, Shannon Bott  
and Nat Cursio, bettybooke

### SUPPLIERS

innocent bystander  
WINEMAKERS  
HEALESVILLE, YARRA VALLEY

jasper.  
HOTEL

### ARTS HOUSE PEOPLE

**Sue Beal** – Team Leader

**Steven Richardson** – Artistic Director

**Jude Gun** – Associate Producer

**Deanna Smart** – Associate Producer

**Olivia Anderson** – Associate Producer

**Malissa Gough** – Business Coordinator

**Patsy Hill** – Bookings Officer

**Freya Waterson** – Business Support Officer

**Adrian Aderhold** – Venues Manager

**Tom Howie** – Technical Production Manager

**Lexie Wood** – Front of House Manager

**Nathan Evers** – Technical Supervisor

**Jim Stenson** – Technical and  
Maintenance Officer

### SUPPORTERS

ARTS  
VICTORIA



MOBILESTATES  
TOURING CONTEMPORARY PERFORMANCE, AUSTRALIA







**ARTS HOUSE**

---

[WWW.ARTSHOUSE.COM](http://WWW.ARTSHOUSE.COM)