



BEYOND BREAD AND CIRCUS

SEASON 2008
August – December

ARTS HOUSE

BEYOND BREAD AND CIRCUS

August – December 2008 Program

Beyond Bread and Circus in 2008 celebrates the dissolution of boundaries between high, low, fringe, mainstream and popular culture. These divisions are irretrievably blurred and increasingly irrelevant in Arts House' current presentation program. Arts House seeks to create a new form of 21st century arts presentation where partnership, dialogue and collaboration is the norm.

Arts House develops, produces and presents dynamic cultural experiences which enable people to make meaningful connections on a local, national and international level.

Presented across two sites, Arts House, North Melbourne Town Hall and Arts House, Meat Market, the Arts House program values arts and culture that can help create a world where people are actively engaged, aware and willing to participate, politically and culturally, to make change.

artshouse.com.au

Hellen Sky and collaborators - Darker Edge of Night

The Tiger Lillies - A Suicide for Winter Tour

The Fondue Set - No Success Like Failure

Pacitti Company - Civil

Andrée Greenwell - The Villainelles

Yara El-Sherbini - A Pub Quiz

Chunky Move - Two Faced Bastard

Lucy Guerin Inc - Corridor

Geoffrey Gurrumul Yunupingu - Gurrumul

The Black Arm Band - Hidden Republic

Dancenorth - Underground

1 – 3 August

4 + 5 August

13 – 16 August

18 + 19 August

21 + 22 August

8 October

8 – 12 October

16 – 25 October

20 + 21 October

24 + 25 October

12 – 16 November

www.melbourne.vic.gov.au/arts



**BEYOND
BREAD AND CIRCUS**

SEASON 2008



Arts House has made every effort to offer wheelchair and limited mobility access throughout the program. Please contact Arts House on 03 9322 3720 for further information.



*Living
the Arts*

'Hellen Sky poetically bridges the human and the technological, the mundane and the lofty.'

CENTRE FOR INTERDISCIPLINARY ART, UNIVERSITY OF UTAH

HELLEN SKY AND COLLABORATORS
**DARKER EDGE
OF NIGHT**

ARTS HOUSE



Hellen Sky and collaborators present **DARKER EDGE OF NIGHT**

A solo performer – Imogene – navigates her way through slippery time fields. Her past, our present and the future are fluid states where boundaries blur between the virtual world and the world of story, imagination and memory.

We open the doors and invite you to take a peak at stage one of **Darker Edge of Night** creative development, the outcome to date of research labs with peer collaborators, exploring relationships between sound, video, text, movement, design and interactivity.

Concept/Performer/Writer: Hellen Sky

Collaborators: Timothy Bateson, Paul Bourke, Margaret Cameron, David Franzke, Susie Fraser, Rebecca Hilton, Garth Paine, Dianne Reid, Tetsutoshi Tabata, Leigh Warren.

Image: Hellen Sky

Darker Edge of Night has been assisted by an Interarts fund Artlab grant by the Australian Government through the Australia Council, its arts funding and advisory body. Technology research assisted by the University of Western Sydney VIPRe (Virtual Interactive Performance Research Environment) and WASP (Western Australia Super-Computing Program).

Fri 1 - Sun 3 Aug 2008

Fri 1 + Sat 2 Aug 8pm

Sun 3 Aug 3pm

60mins no interval



Arts House, Meat Market

5 Blackwood Street, North Melbourne

Tickets: \$15 / \$10

artshouse.com.au

or 03 9639 0096



**BEYOND
BREAD AND CIRCUS**

SEASON 2008





THE TIGER LILLIES

ARTS HOUSE

Arts House presents

THE TIGER LILLIES – A SUICIDE FOR WINTER TOUR

Supported by The Twoks

Dedicated to those with a psychotic dislike of winter, **The Tiger Lillies' A Suicide For Winter Tour** is a collection of exquisite songs of despair from the notorious London trio.

The Tiger Lillies' gruesome salon music and gutter sensibilities celebrate the loneliest of the seasons, unsettling audiences with their shocking black humour, intoxicating serenades and theatrical sophistication.

Featuring songs from their recent releases *Urine Palace* and *Love and War*, **The Tiger Lillies** return to Melbourne with their outrageous mixture of opera, gypsy music, falsetto vocals and exaggerated physicality for two chilling mid-winter performances.

The Tiger Lillies are supported by **The Twoks** performing their melodic loops and gritty layers of violin and percussion electronica, modal jazz, hip hop and gypsy.

Martyn Jaques: Accordion, ukulele, piano, vocals

Adrian Huge: Drums and toys

Adrian Stout: Contrabass and saw

The Twoks are:

Xani Kolac: Violin, Tom Gannon: Drums, Percussion

Image: Mark Holthusen

tigerlillies.com

Warning: Over 18 only. Some material may not contain coarse language and adult themes. Smoke effects.

Mon 4 + Tue 5 Aug 2008

7.30pm

120mins with interval



Arts House, North Melbourne Town Hall

521 Queensberry Street

North Melbourne

Tickets: \$30 / \$25

artshouse.com.au

or 03 9639 0096



**BEYOND
BREAD AND CIRCUS**

SEASON 2008



Living
the Arts

**ARTS
VICTORIA**



'The Fondues deliver exhilarating choreography in their guise as awkward, but enthusiastic, beauty queens in ribbons...both ludicrous and poignant.'

THE SYDNEY MORNING HERALD

THE FONDUE SET
**NO SUCCESS
LIKE FAILURE**

ARTS HOUSE



The Fondue Set presents
NO SUCCESS LIKE FAILURE

Gorged with action, **No Success Like Failure** is a high-volume dance theatre piece full of lying, dying, singing and trying. See **The Fondue Set** blown apart and reformed spectacularly with the help of UK director Wendy Houstoun.

Heaps of new solos and only some unison, new costumes and so many more words, **The Fondue Set** maintains their signature theatricality and concern with engaging the audience, choreographic structures, interesting content and mighty ways of developing dance into new and unknown places.

No Success Like Failure is part talent quest, part educational forum and part cabaret. A hilarious 'how-to' show that leaves you misguided, misdirected and on a crystal clear path to nowhere.

Creators and Performers: Emma Saunders, Elizabeth Ryan and Jane McKernan. Collaborating Director: Wendy Houstoun. Outside Eye: Julie-Anne Long. Lighting Design and Production Management: Neil Simpson. Collaborating Designer: Agatha Gothe-Snape. Project Management: Rosalind Richards.

Warning: Smoke effects

Image: Iren Skaarnes

thefondueset.com.au

No Success Like Failure has been assisted by the Australian Government through the Australia Council for the Arts, its arts funding and advisory body and by Arts NSW.

Wed 13 – Sat 16 Aug 2008

7.30pm

70mins no interval



Arts House, North Melbourne Town Hall

521 Queensberry Street

North Melbourne

Tickets: \$25 / \$18

artshouse.com.au

or 03 9639 0096



**BEYOND
BREAD AND CIRCUS**

SEASON 2008



Living
the Arts

**ARTS
VICTORIA**



arts|nsw

'A seamless flow of beautifully
crafted, intelligent images'

LIVE ART MAGAZINE

PACITTI COMPANY

CIVIL

ARTS HOUSE



Arts House presents
PACITTI COMPANY
CIVIL

In 1996 Robert Pacitti travelled to New York to meet and spend time with author and raconteur, Quentin Crisp, in order to produce a new work that took Crisp's infamous autobiography *The Naked Civil Servant* as its starting point.

Exploring issues of liberty – and disobedience – **Civil** uses live performance, film, slides, original sound materials and music. Since Crisp's death the piece has undeniably shifted, and a work that set out to explore shared aspirations and joint activism now reads as a series of images and ideas placed in relation to notions of legacy.

For the past 18 years the internationally acclaimed **Pacitti Company** has been making award winning performance work for a range of theatre, gallery and site-specific spaces worldwide.

Performed by Richard Eton

Warning: Over 18 only. This show contains adult themes, nudity and explicit images.

Image: Pacitti Company

pacitticompany.com

Mon 18 + Tue 19 Aug 2008

7.30pm

70mins no interval



Arts House, North Melbourne Town Hall

521 Queensberry Street

North Melbourne

Tickets: \$28 / \$22

artshouse.com.au

or 03 9639 0096



**BEYOND
BREAD AND CIRCUS**

SEASON 2008



THE VILLAINELLES

ARTS HOUSE



Green Room Music presents
THE VILLAINELLES

Inspired by the razor-sharp offerings of Australian poets Jordie Albiston, Alison Croggon and Kathleen Mary Fallon, seven-piece chamber-pop outfit **The Villainelles** make their Melbourne debut with two nights of cabaret-folk electronica layered with shades of opera in a performance of the same name.

Featuring award-winning theatre and screen composer Andrée Greenwell, **The Villainelles'** line-up includes Sydney's finest mix of noise-art, classical, indie-pop, impro and crossover musical talents. Greenwell's lavish music and arresting performance create a compelling context for her reflections on enigmatic women: ten 'villain-elles' including Medea, Amelia Earhart, Charlotte Perkins Gilman, Princess Di and The Blessed Virgin Mary.

Music: Andrée Greenwell. Words: Jordie Albiston, Alison Croggon, Andrée Greenwell (after Kathleen Mary Fallon).
Violin: Naomi Radom. Cello: Jane Williams. Electric Guitar: Nick Meredith. Bass : Greg Royal. Drums: Jared Underwood. Vocals: Andrée Greenwell & Donna Hewitt.

Image: Katerina Stratos

Thu 21 + Fri 22 Aug 2008

7.30pm

60mins no interval



Arts House, North Melbourne Town Hall

521 Queensberry Street

North Melbourne

Tickets: \$25 / \$18

artshouse.com.au

or 03 9639 0096



**BEYOND
BREAD AND CIRCUS**

SEASON 2008



Living
the Arts

**ARTS
VICTORIA**





YARA EL-SHERBINI A PUB QUIZ

ARTS HOUSE

Arts House presents

YARA EL-SHERBINI Y.E.S. – I'M AN ARTIST

A PUB QUIZ

Q: Is the wife of a Sultan a Sultana?

Based in London, Yorkshire-born **Yara El-Sherbini** is a visual artist, performer and installation artist making socially engaged work, inviting audiences to participate with her art in the public realm.

In her latest work **A Pub Quiz**, **Sherbini** playfully explores ideas around art, life and international conspiracy theories within the context of the pub quiz format. Custom-made for her first Australian performance after a short residency with local collaborators, **Sherbini**'s season will examine colloquial cultural conventions, malapropisms and misconceptions.

Notorious for satirical cultural representations in her practice, **Sherbini** also presents **A Demonstration**, a tongue-in-cheek video installation that mimics the educational TV format teaching viewers how to make their own carpet bomb.

Entertaining and provocative: **A Pub Quiz** where the Quizmaster is always right.

Created and Performed by Yara El-Sherbini

yaraelsherbini.com

Wed 8 October 2008

8pm

Melbourne Fringe Festival Club



Arts House North Melbourne Town Hall

521 Queensberry Street

North Melbourne

Entry is free. Register on arrival



**BEYOND
BREAD AND CIRCUS**

SEASON 2008



Living
the Arts

**ARTS
VICTORIA**



*Ambiguous
Gaze*



THE AGE
**melbOURne
FRINGE**
festival
2008

'...music as rich and strong and
timeless as the land itself.'

BRISBANE COURIER MAIL

GEOFFREY GURRUMUL YUNUPINGU

GURRUMUL

ARTS HOUSE



Arts House in association with Melbourne International Arts Festival present
Geoffrey Gurrumul Yunupingu
GURRUMUL

Blind from birth, **Geoffrey Gurrumul Yunupingu** is a quiet but deep well of musical creativity and expression. Gudjuk, as he is also called, is from the Gumatj nation, his mother from Galpu, both First Nation peoples from North East Arnhemland. A former member of Yothu Yindi, now with Saltwater Band, **Gurrumul**'s solo live excursions highlight his natural talent as a singer, songwriter and well-respected multi-instrumentalist, he sings and plays to lament, uplift and inspire.

Accompanied with just an acoustic guitar, grand piano and double bass, **Gurrumul**'s songs are modern-day arias of his homeland, taking the audience on an intimate musical experience through his life and song. Recently awarded Male Musician of the Year at the Northern Territory Indigenous Music awards, **Gurrumul**'s self-titled debut album is breaking into mainstream music charts to critical acclaim.

Written and performed by Geoffrey Gurrumul Yunupingu
with Michael Hohnen and Francis Diatschenko.

Image: Sam Karanikos

skinnyfishmusic.com.au

Mon 20 + Tue 21 Oct 2008

8pm

50mins no interval



Arts House, North Melbourne Town Hall

521 Queensberry Street

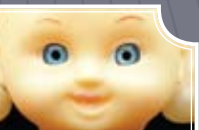
North Melbourne

Tickets: \$40 / \$30

Stud \$25 / Groups (8+) \$36

melbournefestival.com.au

Ticketmaster: 1300 136 166



**BEYOND
BREAD AND CIRCUS**

SEASON 2008



**ARTS
VICTORIA**



MELBOURNE
INTERNATIONAL
ARTS FESTIVAL





'...a massive, inspiring joyful celebration of survival against odds, with a suitably sharp sting in its tail... it takes on more of the character of a celebration rather than a fight. We have hope.'

AUSTRALIAN STAGE ONLINE

THE BLACK ARM BAND HIDDEN REPUBLIC

ARTS HOUSE

Melbourne International Arts Festival in association with Arts House presents a
Black Arm Band and Melbourne Symphony Orchestra collaboration

THE BLACK ARM BAND – HIDDEN REPUBLIC

Two of Australia's foremost musical forces come together for an historic musical event that celebrates songs of hope and resistance from the open heart of Australia's contemporary Indigenous music. **Hidden Republic** delves deeply into the songbook of contemporary Aboriginal music to reflect the renewed promise of 'post-apology' Australia. This iconic music of national significance draws on the combined musical virtuosity, power and subtlety of 33 members of the **Melbourne Symphony Orchestra** together with a blistering jazz section to underscore the vocal artistry of **The Black Arm Band**.

Uplifting and confronting, **The Black Arm Band's** music renders an intimate portrait of contemporary Indigenous life.

Performers: David Arden, Mark Atkins, Lou Bennett, Sally Dastey, Emma Donovan, Kutcha Edwards, Bevan Gabanbulu, Shane Howard, Ruby Hunter, Bunna Lawrie, Jimmy Little, Rachael Maza Long, Shellie Morris, Archie Roach, Amy Saunders, Dan Sultan, Ursula Yovich, Gurrumul Yunupingu, members of The Melbourne Symphony Orchestra. Special guests Genevieve Lacey and Michael Hohnen.

Warning: Aboriginal and Torres Strait Islander people are warned that material included in this concert has been gathered from a range of sources and may contain voices of Indigenous people who have passed away, and may cause sorrow.

Image: Ned Meldrum

blackarmband.com.au

Fri 24 + Sat 25 Oct 2008

8pm

105mins no interval

State Theatre, the Arts Centre

100 St Kilda Road, Melbourne

Prem \$65

A Res \$50 / \$37.50 / Groups (8+) \$45

B Res \$40 / \$30 / Stud \$21

C Res \$28 / \$21 / Stud \$21

School Groups \$15

melbournefestival.com.au

Ticketmaster: 1300 136 166

Hidden Republic has been assisted by the Australian Government through the Australia Council for the Arts, its arts funding and advisory body (Aboriginal Torres Strait Islander Arts Board, Music Board) and by Annamila Pty Ltd.



**BEYOND
BREAD AND CIRCUS**

SEASON 2008





CHUNKY MOVE

**TWO FACED
BASTARD**

ARTS HOUSE

Melbourne International Arts Festival and Chunky Move present

TWO FACED BASTARD

The company behind the groundbreaking 2007 Melbourne International Arts Festival work *Glow* returns with a bold new dance-theatre work that gives a rare glimpse into the performers' world and takes the audience backstage.

Melbourne's leading contemporary dance company **Chunky Move** has earned an enviable reputation for producing a distinct yet unpredictable brand of genre-defying performances and **Two Faced Bastard** promises to be another truly extraordinary experience.

On either side of a dividing curtain a group of performers juggle two simultaneous shows played to opposing audiences. Each exit through the curtain becomes an entrance on the other side. There is no backstage, nowhere to get off, nowhere to hide.

Direction and Choreography: Gideon Obarzanek and Lucy Guerin. Set Design: Ralph Myers. Composer: Darrin Verhagen. Costume Design: Paula Levis. Performers: Vincent Crowley, Antony Hamilton, Michelle Heaven, Stephanie Lake, Brian Lipson, Byron Perry, Lee Serle.

chunkymove.com

Wed 8 – Sun 12 Oct 2008

Preview: Wed 8 Oct 8pm

Thu – Sat 8pm

Sat – 2pm

Sun – 2pm + 6pm

60mins no interval



Arts House, Meat Market

5 Blackwood Street, North Melbourne

Tickets: \$37 / \$30

Stud \$25 / Group (8+) \$33

melbournefestival.com.au

Ticketmaster: 1300 136 166



**BEYOND
BREAD AND CIRCUS**
SEASON 2008



**ARTS
VICTORIA**



**CHUNKY
MOVE**



MELBOURNE
INTERNATIONAL
ARTS FESTIVAL

theage.com.au
THE AGE, AGE

icon.inc
creative communications



'An emotional high...anyone who
thinks dance is a tulle-wrapped
fairytale will consider (Lucy Guerin
Inc) a discovery'

SYDNEY MORNING HERALD

LUCY GUERIN INC

CORRIDOR

ARTS HOUSE



Melbourne International Arts Festival and Lucy Guerin Inc present

CORRIDOR

One of Australia's most innovative dance companies moves through the confines of physical and psychological space in a highly anticipated, intelligent new work.

Corridor is an investigation into human activity, both mental and physical, in places of waiting and transit. It is an intimate performance work which connects audience to performer, exploring the individual's place within the sphere of public interaction. A connecting space reflects the way people view themselves, what they aspire to be, and what they feel is expected of them in relation to standards set by society and the media.

Choreographer: Lucy Guerin. Dancers: Sara Black, Antony Hamilton, Kirstie McCracken, Byron Perry, Harriet Ritchie, Lee Serle. Sound Design: Haco. Set Design: Donald Holt. Costume Design: Paula Levis and Susie Gerraty. Lighting: Keith Tucker. Producer: Michaela Coventry

Warning: Limited Seating Capacity

Image: Jeff Busby

lucyguerin.com

Thu 16 - Sat 25 Oct 2008

Preview: Thu 16 Oct 7.30pm

Fri 17 7.30pm

Sat 18 + Sun 19 4pm + 7.30pm

Tue 21 - Thu 23 7pm

Fri 24 6pm

Sat 25 1pm + 4pm

60mins no interval



Arts House, Meat Market

5 Blackwood Street, North Melbourne

Tickets: \$40 / \$30

Stud \$25 / Group (8+) \$36

Preview \$25

melbournefestival.com.au

Ticketmaster: 1300 136 166

Lucy Guerin Inc is supported by the Australian Government through the Australia Council for the Arts, its funding and advisory body.



**BEYOND
BREAD AND CIRCUS**

SEASON 2008



LUCY GUERIN inc.

'Fast, dangerous, quirky but with a
core of almost angry sadness.'

COURIER MAIL

DANCENORTH UNDERGROUND

ARTS HOUSE



Arts House and Mobile States present

DANCENORTH UNDERGROUND

Dancenorth's Underground leaps from the darkly moody and hilarious to the wildly athletic .

Set in a subway during rush hour, **Underground** is a place of crowded isolation, familiar yet strange. It's a world where commuters slip between mundane reality and a vivid dream world – disconnected from each other, yet capable of great compassion and tenderness.

Fuelled by the breathtaking choreography of **Dancenorth's** Artistic Director, Gavin Webber, **Underground** is dance theatre at its explosive best with a blistering score by Luke Smiles carving it up with Nick Cave, the Nine Inch Nails and Messerschups.

Direction: Gavin Webber. Choreography: Gavin Webber and dancers. Rehearsal Direction: Michelle Ryan. Lighting Design: Jo Currey. Sound Design: Luke Smiles. Dancers: Alice Hinde, Charmene Yap, Hsin Ju Chiu, Joshua Thomson, Kate Harman, Kyle Page

Image: Fiona Melder
Warning: Strobe lighting
dancenorth.com.au

Wed 12 – Sun 16 Nov 2008

Wed – Sat 7.30pm; Sun 6pm

75mins no interval



Arts House, North Melbourne Town Hall

521 Queensberry Street

North Melbourne

Tickets: \$25 / \$18

artshouse.com.au

or 03 9639 0096

Underground is toured by Performing Lines for Mobile States: Touring Contemporary Performance Australia, with the assistance of the Australian Government through the Australia Council, its arts funding and advisory body, and through Playing Australia, the national performing arts touring program.



**BEYOND
BREAD AND CIRCUS**

SEASON 2008



**ARTS
VICTORIA**



MOBILESTATES
TOURING CONTEMPORARY PERFORMANCE, AUSTRALIA

DANCENORTH

BEYOND BREAD AND CIRCUS

August – December 2008 Program

Arts House acknowledges and respects the customs and traditions of Indigenous Australians and their special relationship with the land. The artists and organisers respectfully acknowledge that this program takes place on the land of the traditional owners of the Kulin Nation.

Arts House is a City of Melbourne contemporary arts initiative.

Each year Arts House presents a curated program of contemporary art featuring performances, exhibitions, live art, installations and cultural events which are programmed to inspire dynamic community engagement. For more information on the full range of Arts House programs go to artshouse.com.au



Living
the Arts

SUPPORTERS

**ARTS
VICTORIA**



appetite



Arts House Reference Panel

Rinske Ginsberg – Chair

Sue McCauley

Siu Chan

Robin Laurie

Samantha Comte

Martin Brennan

Stuart Koop – Arts Victoria
representative for CultureLAB

International Advisors

Helen Cole – Arnolfini, Bristol UK

Gyorgy Szabo – House of Contemporary Art,
Budapest Hungary

Arts House People

Sue Beal – Team Leader

Steven Richardson – Artistic Director

Kate Ben-Tovim – Associate Producer

Jude Gun – Program Producer

Sarah Ernst – Artistic Administrator

Brian Horder – Business Coordinator

Adrian Aderhold – Production Supervisor

Tom Howie – Technical Supervisor

Lexie Wood – FOH and Technical Coordinator

Mike Mullins – Venue and Operations Manager

Eleni Arbus – Creative Spaces Project Coordinator

Lauren Anderson – Bookings Officer

Genine Romagnoli – Administrator

Sarah Caufield – Special Projects Administrator



**BEYOND
BREAD AND CIRCUS**

SEASON 2008

artshouse.com.au

ARTS HOUSE