

Presented by Arts House

# TRIBUNAL PYT | Fairfield

A

Image: Alex Wisser

H



S

Thu 20 – Sun 23 Jul  
8:15pm Thu 20 – Sun 23 Jul  
3pm Sat 22 Jul  
5pm Sun 23 Jul  
Auslan interpreted 8:15pm Fri 21 Jul  
70 mins  
**Warning:** Smoke effects, adult concepts  
of violence and trauma

2

[artshouse.com.au](http://artshouse.com.au)

## Creative Team

### **Concept & Lead Artist**

Karen Therese

### **Concept & Human Rights**

#### **Lawyer**

Joe Tan

### **Creative Collaborators/ Text/**

#### **Performers**

Rhonda Grovenor Dixon, Mahdi Mohammadi, Karen Therese, Paul Dwyer, Katie Green, Jawad Yaqoubi plus guest speakers

#### **Text Editor**

Paul Dwyer

#### **Outside Eye**

Chris Ryan

#### **Design**

Province Studio (Laura Pike and Anne Louise Dadek)

#### **Video Design**

Sean Bacon

#### **Sound Design**

James Brown

#### **Lighting Design**

Emma Lockhart-Wilson

#### **Stage Manager**

Patrick Howard

## Artist Statement

PYT Fairfield and *TRIBUNAL* would like to acknowledge the Traditional Custodians of land we are performing on the people of the Kulin Nation, and pay our respects to the elders, past, present and future.

The members of *TRIBUNAL* met for 15 hours a week for 8 months of conversation to develop the language of *TRIBUNAL*. This intensive time was followed by approximately 6 weeks of rehearsal. We all worked to eliminate the presence of media, and politicians within the voice of the work and to instil a radical kindness into the national conversation about refugees and asylum seekers. Through the leadership of Aunty Rhonda, we embedded ceremony and ritual into the process of creating this work to give space for audience to listen and to honour the histories and stories told.

We dedicate *TRIBUNAL* to the lives of the 55 asylum seekers who drowned on 10th of June 2013 as we sat in Adelaide and London developing this work. Their tragic death formed the inspiration to this work.

*“Truth what you see, truth what you hear, truth what speak.”*

– Senoir Lawman Uncle Max  
Dullamunmun Harrisson

Karen Therese on behalf of *TRIBUNAL*.

## Biographies

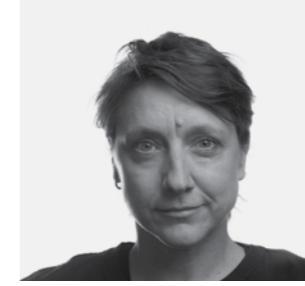
### **PYT I Fairfield**

×

Based in Fairfield in Western Sydney, PYT is led by Artistic Director Karen Therese, it is a company with a growing reputation for making brave and transformative work, impacting and inspiring audiences and artists across Australia. We do this by creating innovative performance and social artistic experiences both in performance spaces and across diverse sites of urban Fairfield, Mt Druitt, broader Western Sydney and Australia. Fairfield is Australia's most multi-cultural suburb, PYT's work and practice reflects our local community and our work is embedded in the fact that contemporary Australia is diverse.

PYT's recent work includes, *WOMEN OF FAIRFIELD* (partner MCA, C3\_West, and STARTTS) Winner Best Arts Program FBi SMAC Awards, *JUMP FIRST, ASK LATER* ( partner Force Majeure) Winner of the 2016 Australian Dance Award for Outstanding Achievement in Youth Dance and nominated for a 2017 Helpmann Award. *JUMP FIRST, ASK LATER* has been presented at PYT I Fairfield, Arts Centre Melbourne, Sydney Opera House and Adelaide Festival Centre. *TRIBUNAL* has been presented by Griffin Theatre Company, PYT I Fairfield, Museum of Contemporary Art and will tour to ArtsHouse, Melbourne in July.

One of PYT's key objectives is to develop the next generation of outstanding emerging artists from Western Sydney. Our key development programs include PYT Residency, PYT Ensemble, FUNPARK and PILOTS. Currently PYT have a series of new works in development for 2018 including *Swimming Pool* directed by Tessa Leong, *Enflame* with partner Branch Nebula and *Playlist* directed by Karen Therese.



Karen Therese



Rhonda Grovenor Dixon



Mahdi Mohammadi



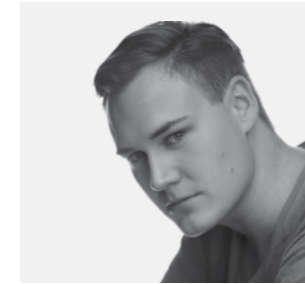
Paul Dwyer



Katie Green



Jawad Yaqoub



Patrick Howard



James Brown



Emma Lockhart-Wilson

Thank You



*TRIBUNAL* is produced by PYT | Fairfield. *TRIBUNAL* was first presented at Griffin Theatre Company in 2016 with support from the Sidney Myer Fund. PYT | Fairfield acknowledges the support of the Australia Council for the Arts, Create NSW and Fairfield City Council.

Arts House, as a key program of the City of Melbourne, is Melbourne's contemporary centre for performance and interactive artforms. We support new and diverse ways to make and experience art which is participatory and experiential, interdisciplinary and trans-disciplinary, curated through a balance of provocation, responsiveness and collaboration with artists and audiences.

For more information, please contact us on the details below.

521 Queensberry Street  
North Melbourne VIC 3051  
(03) 9322 3720

[artshouse@melbourne.vic.gov.au](mailto:artshouse@melbourne.vic.gov.au)  
[artshouse.com.au](http://artshouse.com.au)

Bookings:  
[artshouse.com.au](http://artshouse.com.au) or  
(03) 9322 3720

Arts House acknowledges the traditional land upon which we are located, of the Wurundjeri and Boon Wurrung people of the Kulin nation, and pay our respect to Elders both past and present and, through them, to all Aboriginal and Torres Strait Islander people.

